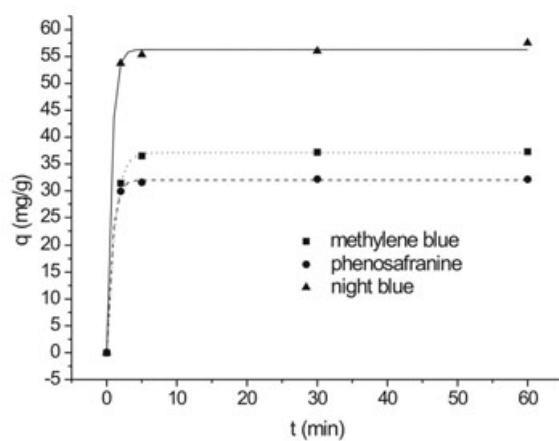
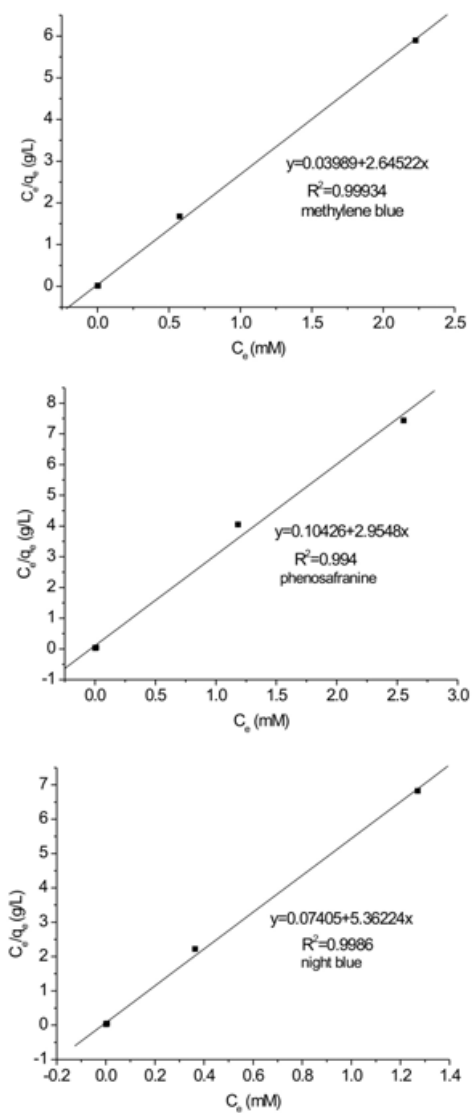


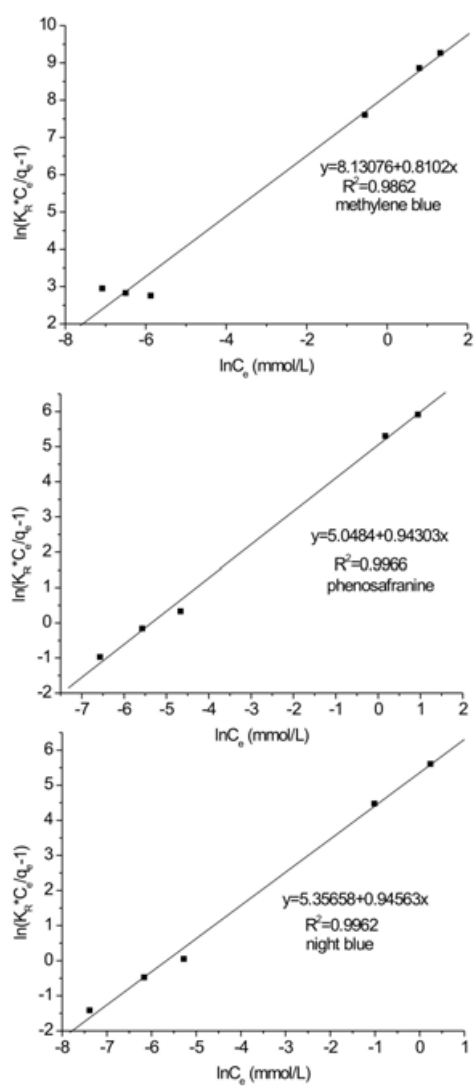
### Electronic Supplementary Information (ESI)



**Fig. 1S** Kinetics of the adsorption of three basic dyes onto C-MS-L. Experimental conditions: temperature 25 °C, pH=10, concentration: 1mM.



**Fig.2S** Langmuir isotherm linear plots for the adsorption of methylene blue, phenosafranine and night blue onto C-MS-L at pH=10.



**Fig. 3S** Redlich-Peterson isotherm linear plots for the adsorption of methylene blue, phenosafranine and night blue onto C-MS-L at pH=10.

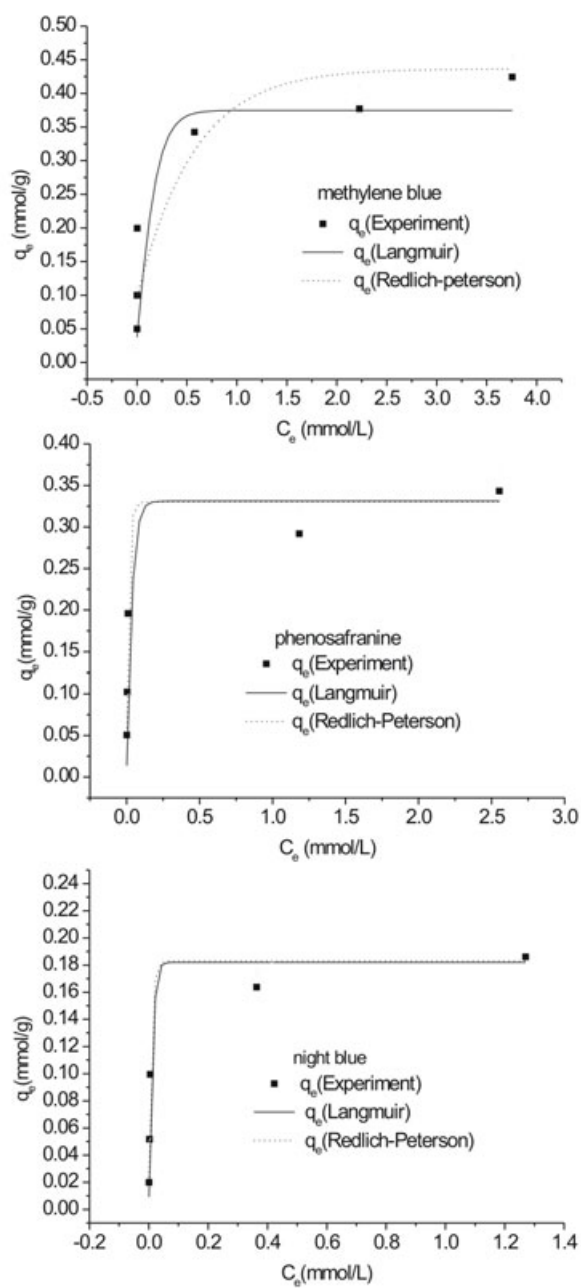


Fig. 4S Different isotherm equation plots for the adsorption of methylene blue, phenosafranine and night blue onto C-MS-L.

