

Electronic Supplementary Information (ESI) for B614191A

Biomimetic Morphological Design for Manganese Oxide and Cobalt Hydroxide Nanoflakes Having a Mosaic Interior

Yuya Oaki and Hiroaki Imai*

Department of Applied Chemistry, Faculty of Science and Technology, Keio University,
3-14-1 Hiyoshi, Kohoku-ku, Yokohama, 223-8522, Japan

Email: hiroaki@applc.keio.ac.jp

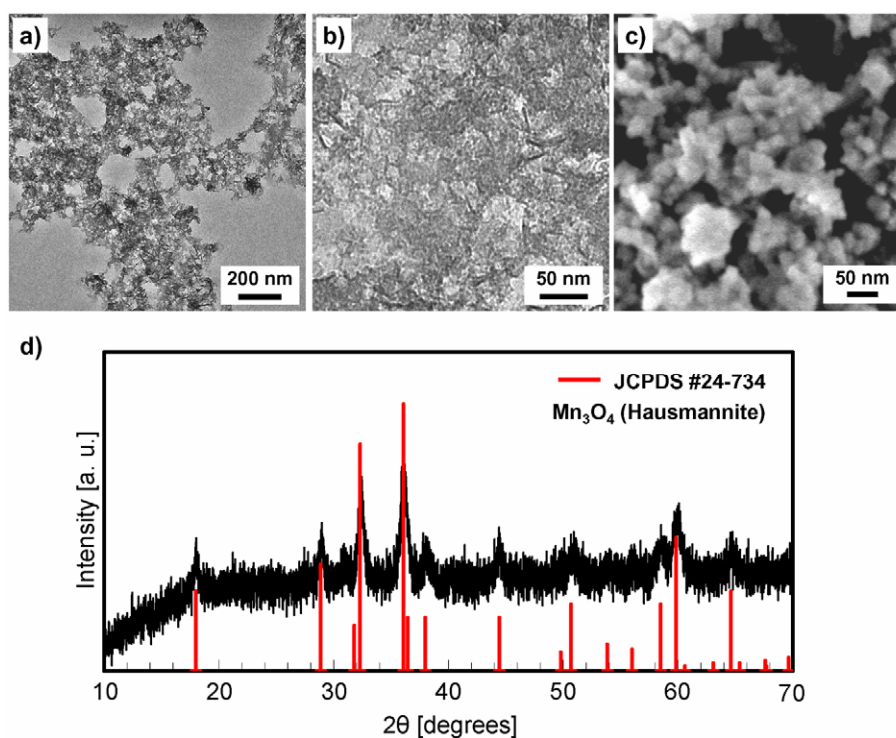


Figure S1. Manganese oxide synthesized in the absence of PAA. a and b) FETEM images of the aggregates of sheet-like morphology. A copper grid was immersed in the liquid before centrifugation within 12 hours. c and d) FESEM image and XRD pattern of the precipitates, respectively. According to these results, Mn₃O₄ was only obtained after drying and centrifugation,

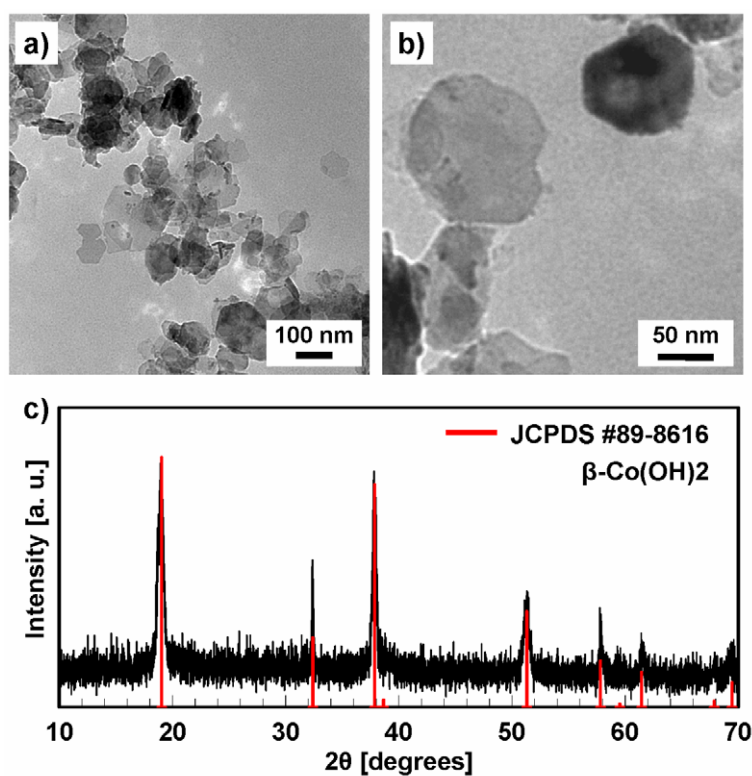


Figure S2. Cobalt hydroxide synthesized in the absence of PEI. a and b) FETEM images; c) XRD pattern of the precipitates. The precipitates were irregular size of β -Co(OH)₂ plates.

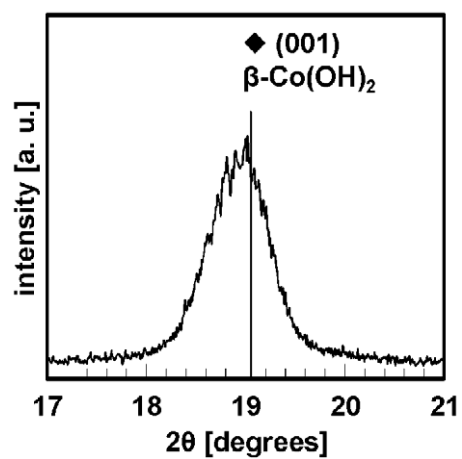


Figure S3. Magnified XRD pattern of the resultant cobalt hydroxide/PEI composites.