

## Peptides that Noncovalently Functionalize Single Wall Carbon Nanotubes to Give Controlled Solubility Characteristics

Leah S. Witus<sup>†</sup>, John-David R. Rocha<sup>†</sup>, Virany Yuwono<sup>†</sup>, Sergey E. Paramonov<sup>†,§</sup>, R. Bruce Weisman<sup>†</sup>, Jeffrey D. Hartgerink<sup>\*†,‡</sup>

<sup>†</sup>Department of Chemistry and <sup>‡</sup>Bioengineering, Rice University, 6100 Main Street, MS60, Houston, Texas 77005

<sup>§</sup>Current address: Department of Chemistry, University of California Berkeley, CA 94720

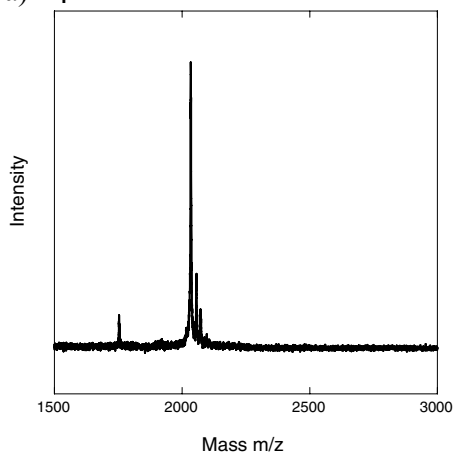
### Supplemental Data:

**Supplemental Table 1:** Expected and measured peptide masses.

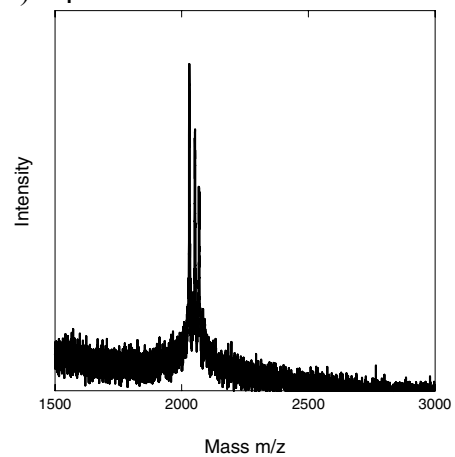
Peptide	Sequence	Expected mass		Measured mass
<b>E<sub>4</sub></b>	EEEEHSSYWYAFNNKT	[M+H] <sup>+</sup>	2035	2034
		[M+Na] <sup>+</sup>	2057	2057
		[M+K] <sup>+</sup>	2073	2073
<b>K<sub>4</sub></b>	KKKKHSSYWYAFNNKT	[M+H] <sup>+</sup>	2031	2031
		[M+Na] <sup>+</sup>	2053	2053
		[M+K] <sup>+</sup>	2069	2070
<b>E<sub>4</sub>C<sub>4</sub></b>	EEEECCCCHSYWYAFNNKT	[M+H] <sup>+</sup>	2448	2448
		[M+Na] <sup>+</sup>	2470	2470
		[M+K] <sup>+</sup>	2486	2485

**Supplemental Figure 1:** Peptide masses measured by MALDI-TOF mass spectrometry

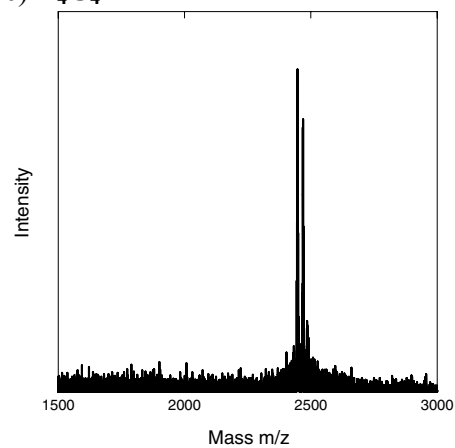
a) **E<sub>4</sub>**



b) **K<sub>4</sub>**

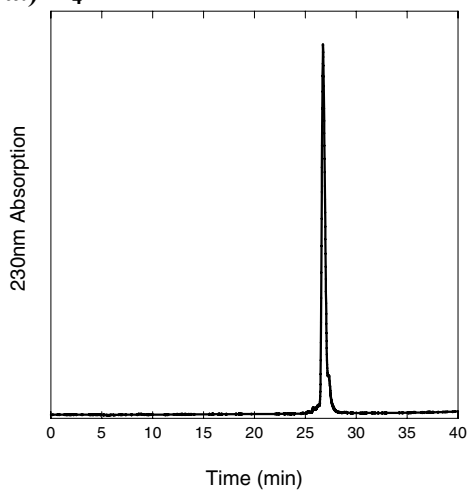


c) **E<sub>4</sub>C<sub>4</sub>**

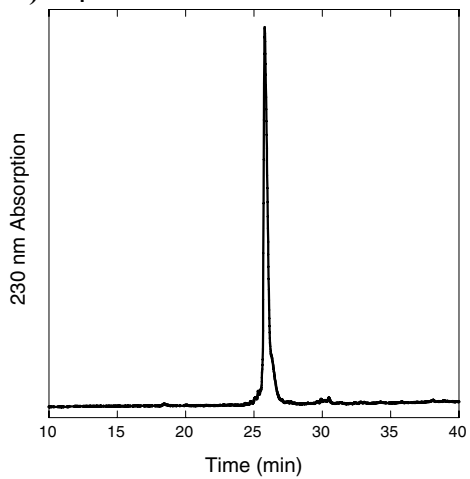


**Supplemental Figure 2: Purification by HPLC**

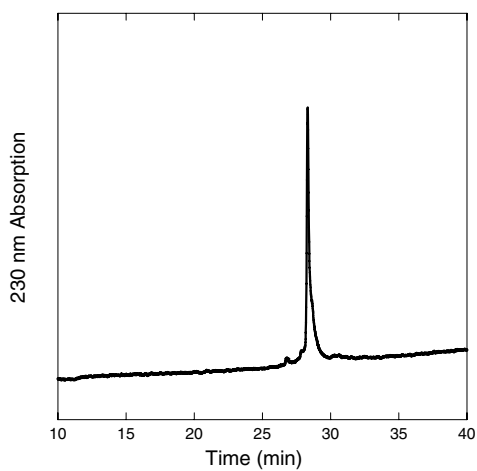
**a.) E<sub>4</sub>**



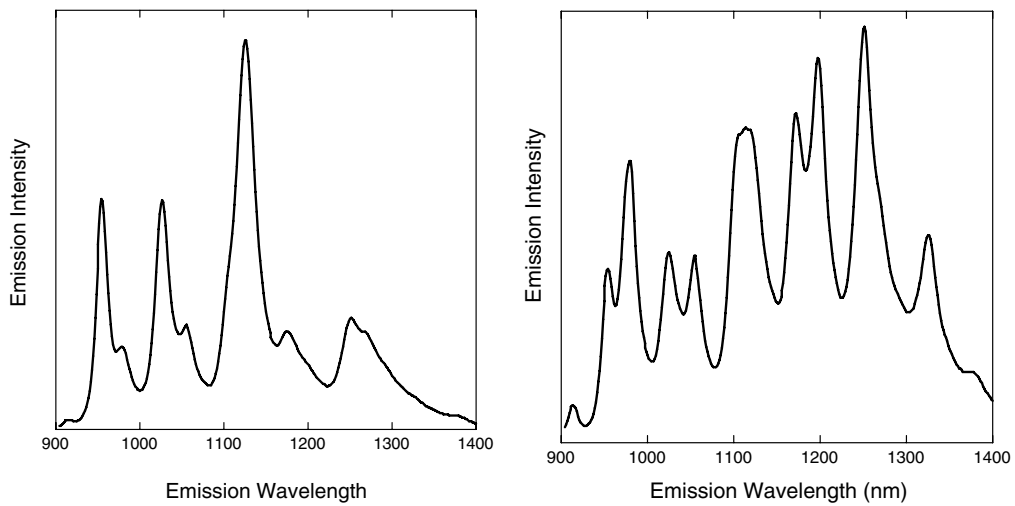
**b.) K<sub>4</sub>**

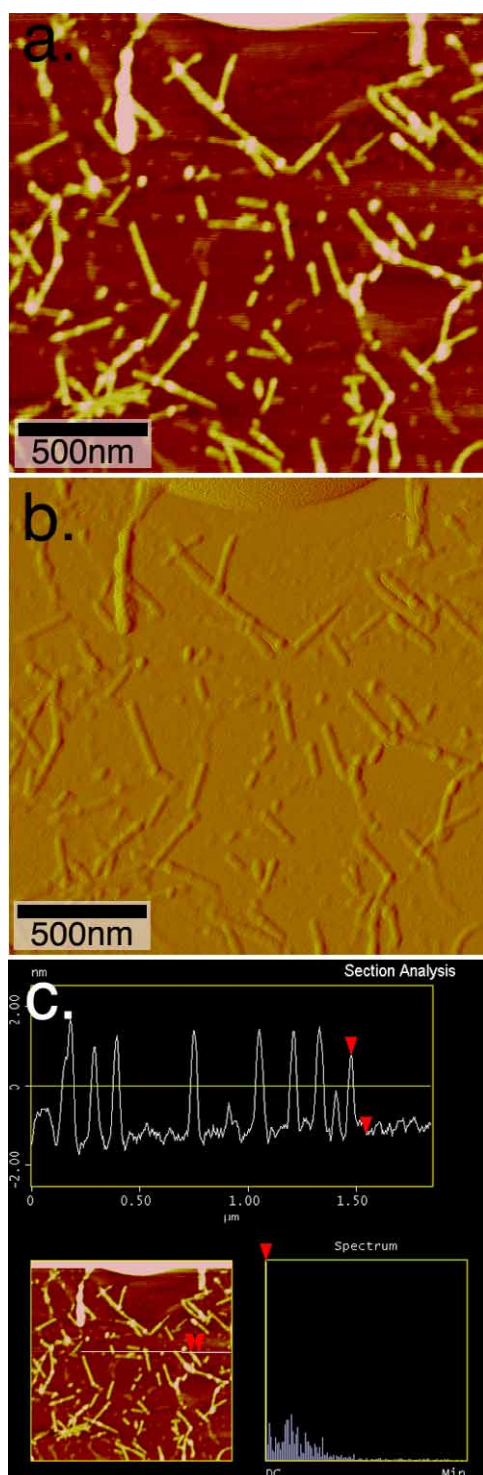


**c.) E<sub>4</sub>C<sub>4</sub>**



**Supplemental Figure 3:** One-dimensional fluorescence of SDBS-SWNT solution. a) 661 excitation wavelength b) 784 excitation wavelength





**Supplemental Figure 4.** Tapping Mode AFM image of peptide coated nanotubes spin coated onto mica. a) Height image, vertical scale 5nm. b) Phase image. c) Height profile of selected section of peptide coated nanotubes. Average height of peptide coated SWNT is 2.7 nm.