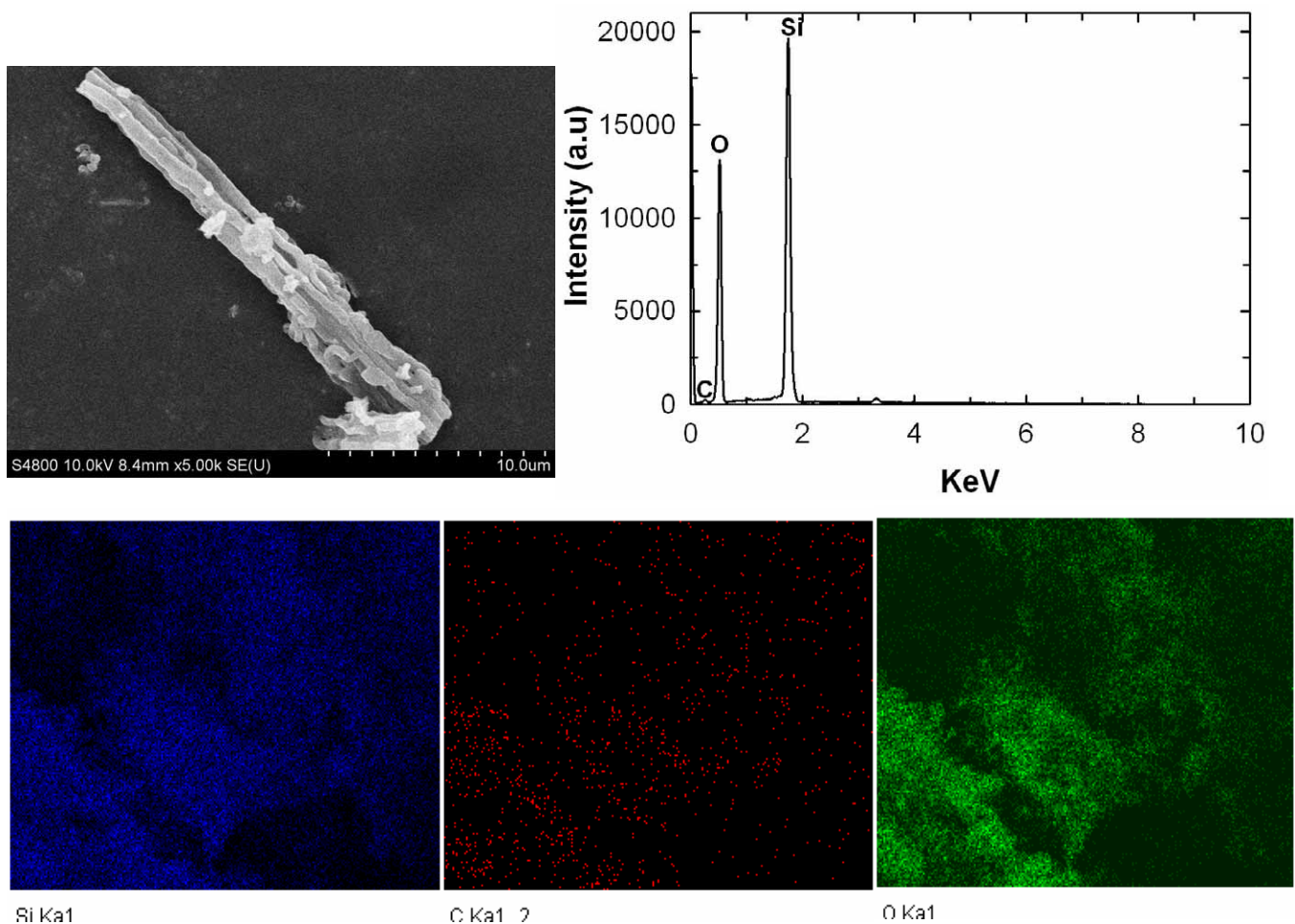


Supplementary Information:
SEM-EDS elemental mapping of sample 24 h of method 1.



Upper left: SEM image of a composite particle obtained from method 1 (24 h) shows a characteristic SBA-15 fibrous morphology.

Upper right: Elemental analysis (details below) shows clear peaks corresponding to Si and O, and less than 2 wt% C, demonstrating that the carbon is almost completely removed in the final sample.

Spectrum processing Peaks possibly omitted : 1.046, 3.322, 3.585 keV

Processing option : All elements analyzed (Normalized)

Number of iterations = 2

Standard :

C CaCO₃ 1-Jun-1999 12:00 AM

O SiO₂ 1-Jun-1999 12:00 AM

Si SiO₂ 1-Jun-1999 12:00 AM

Element	Weight%	Atomic%
C K	1.97	3.29
O K	49.69	62.23
Si K	48.33	34.48
Totals	100.00	