

Electronic Supplementary Information

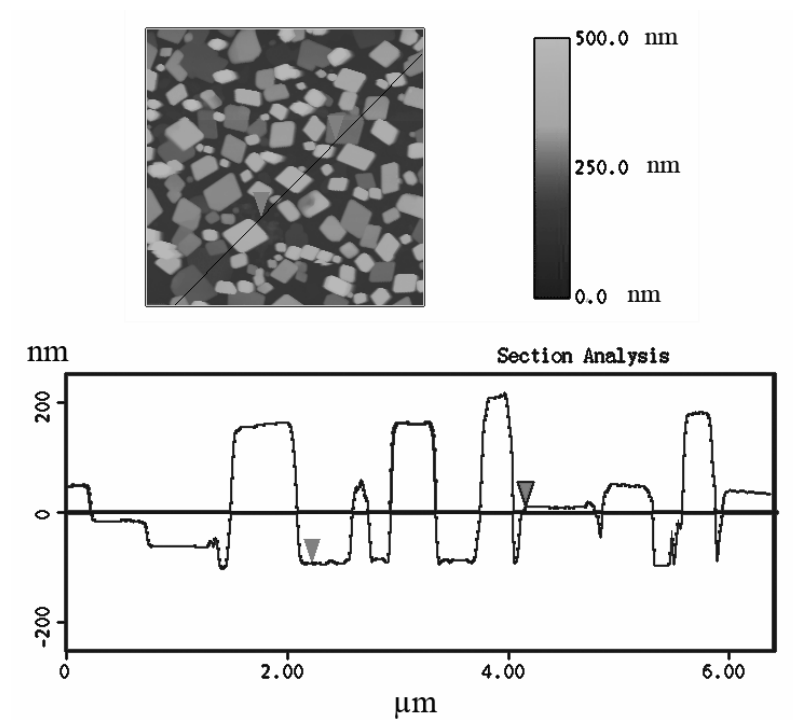


Fig. S1 AFM images (5 × 5 μm) of 50 nm thick film of **1** deposited on SiO₂/Si substrate, $T_{\text{sub}} = 100\text{ }^{\circ}\text{C}$.

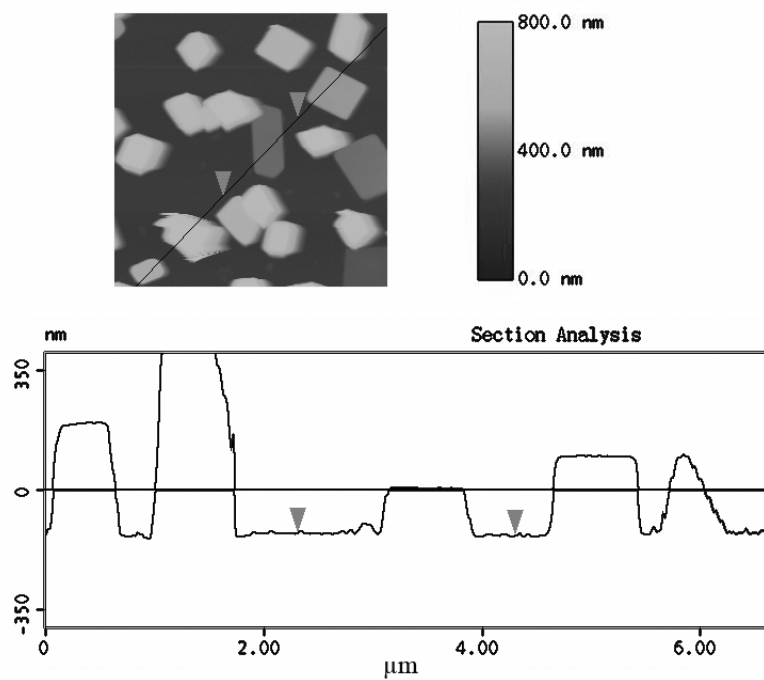


Fig. S2 AFM images (5 × 5 μm) of 50 nm thick film of **1** deposited on OTS/SiO₂/Si substrate, $T_{\text{sub}} = 100\text{ }^{\circ}\text{C}$.