

Supplementary Information

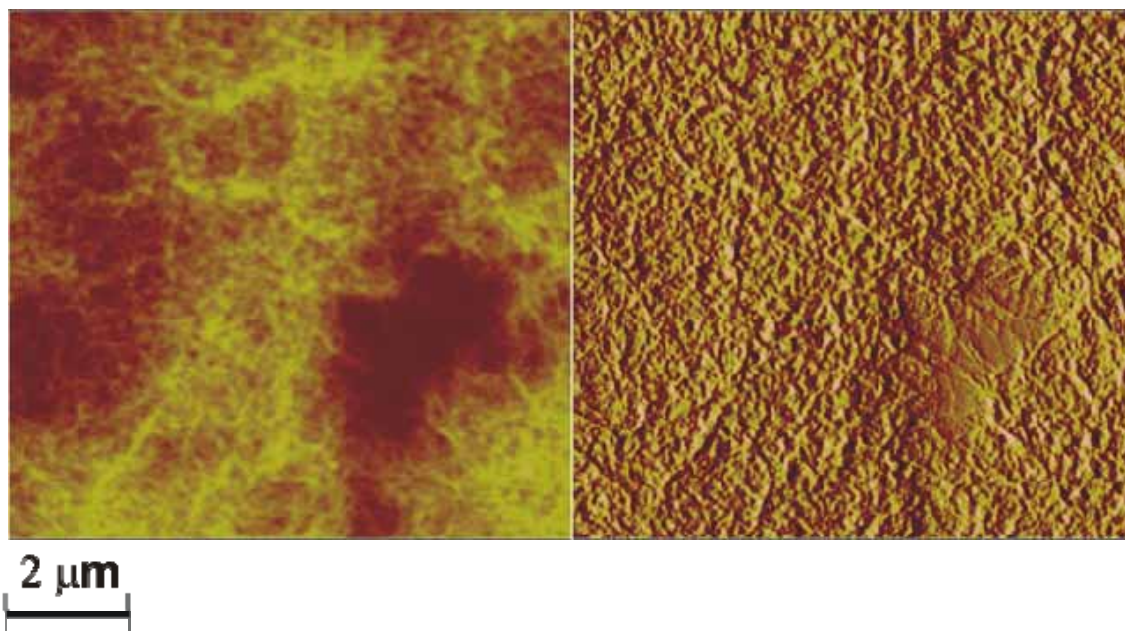
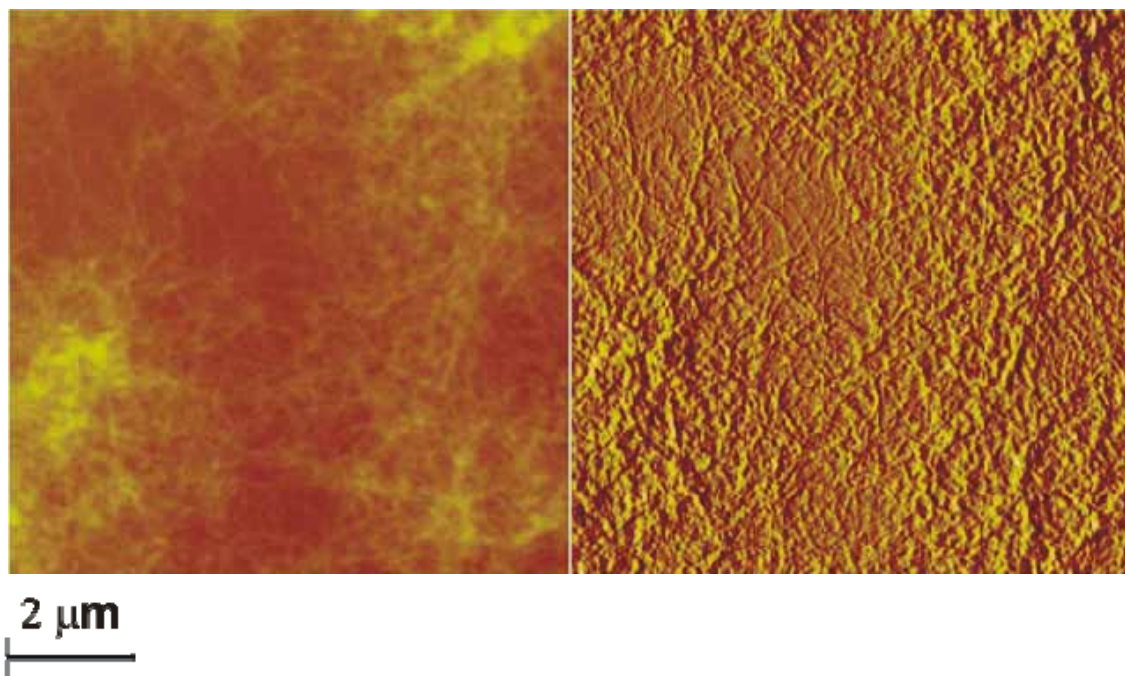


Figure S1. AFM images for s-PS films, as obtained by spin coating procedures at 1600 rpm from toluene solution, before and after treatment with carvone vapor. Left, height images; right, amplitude images.

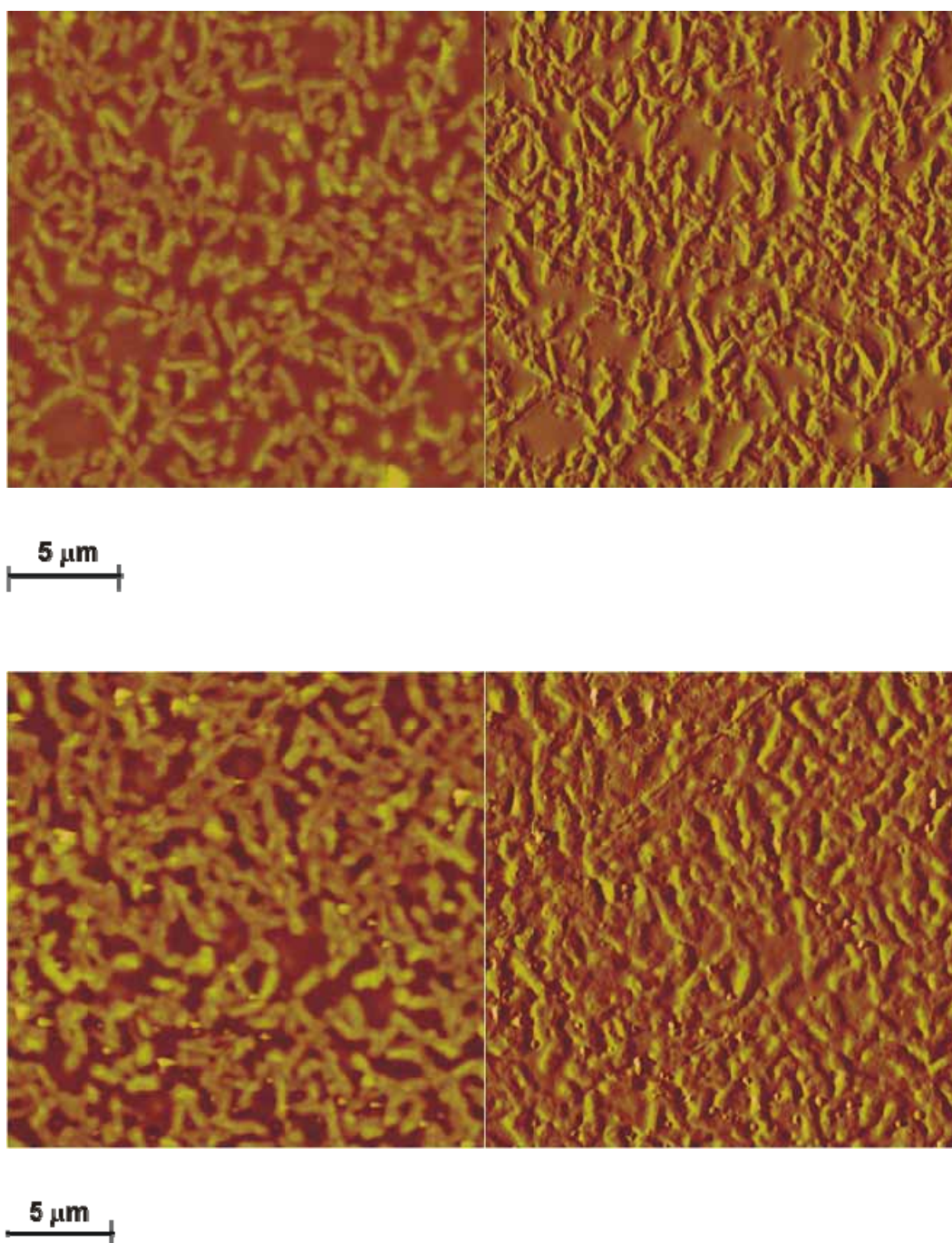


Figure S2. AFM images for s-PS films, as obtained by spin coating procedures at 1600 rpm from chloroform solution and treated with R-carvone vapor: upper images, unannealed; lower images, annealed at 240°C for 15 min. Left, height images; right, amplitude images.