

Supporting information

Red, green, and blue quantum dot LEDs with solution processable ZnO nanocrystal electron injection layers

Jan W. Stouwdam and René A. J. Janssen

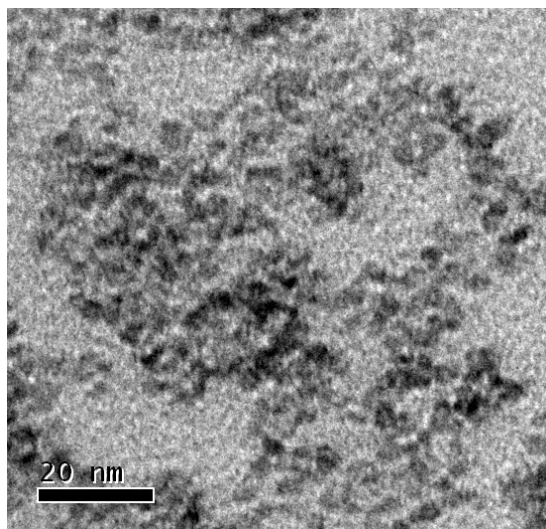


Figure S1. TEM picture of ZnO nanocrystals

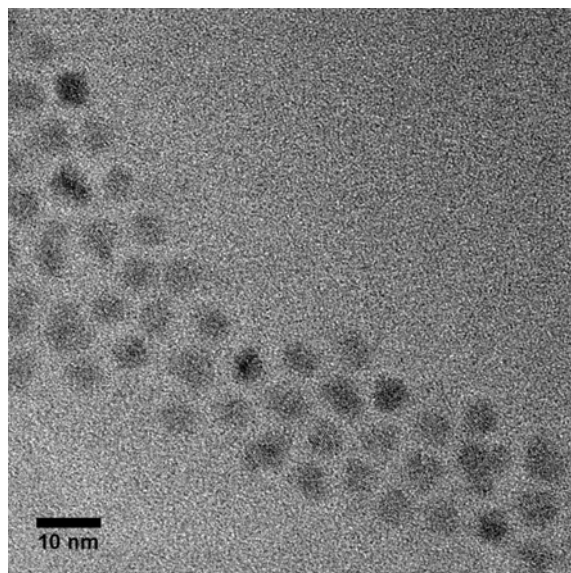


Figure S2. TEM picture of CdSe/ZnS core shell nanocrystals with an emission maximum of 620 nm.

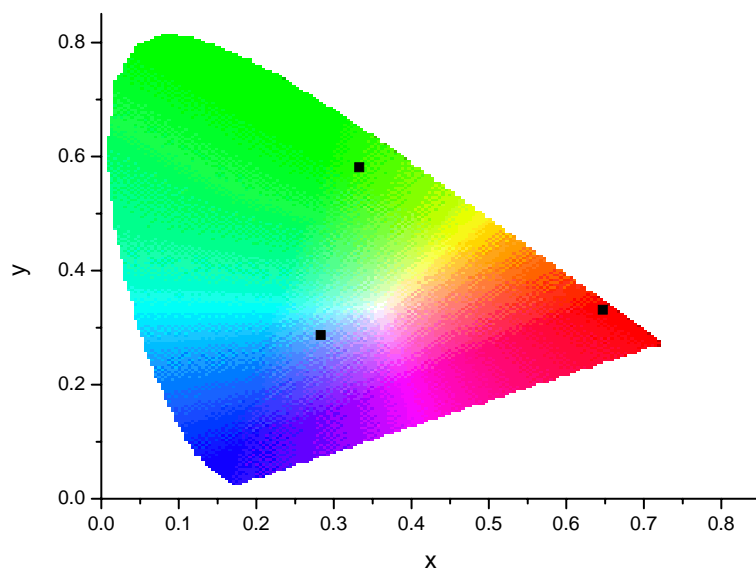


Figure S3. Plot with the CIE coordinates of the blue, green and red emitting QD-LEDs.