

Figures for Electronic Supplementary Information

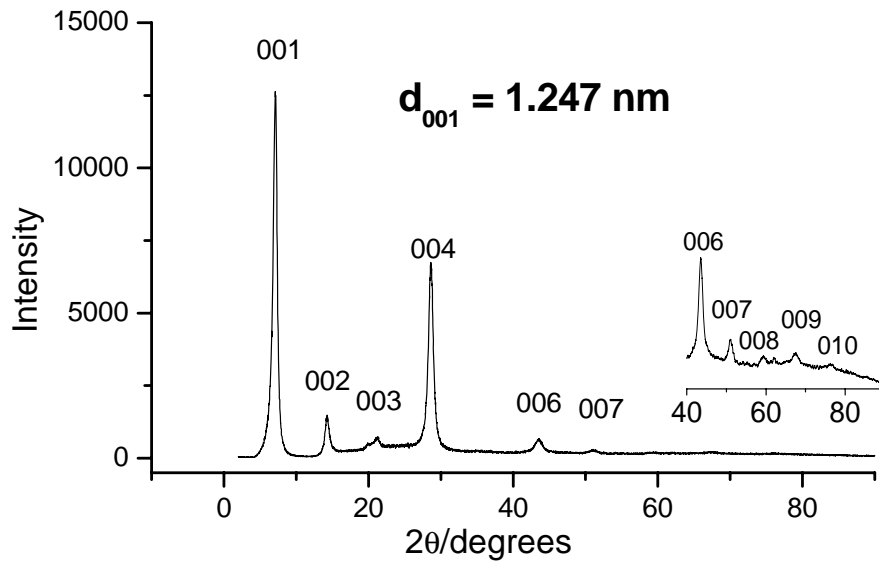


Figure 1S. XRD pattern of an oriented film of the ultra-fine-fraction of SWy-2 used as starting clay material.

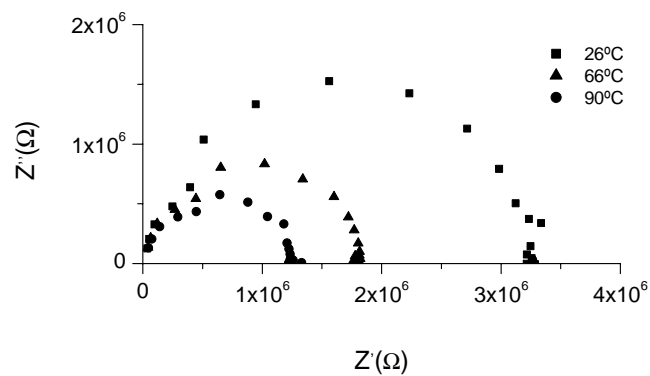


Figure 2S. Nyquist diagrams of a sample of PEDOT-montmorillonite nanocomposite containing around 100 mmol of PEDOT per 100g of clay. Measurements were carried out under N₂ flux at different temperatures (26, 66 and 90 °C).