

Supplementary Materials

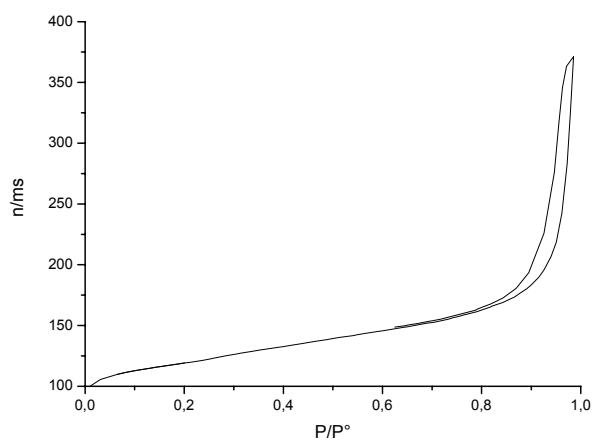


Figure S1 BET diagram of silicalite-1 nanoparticles

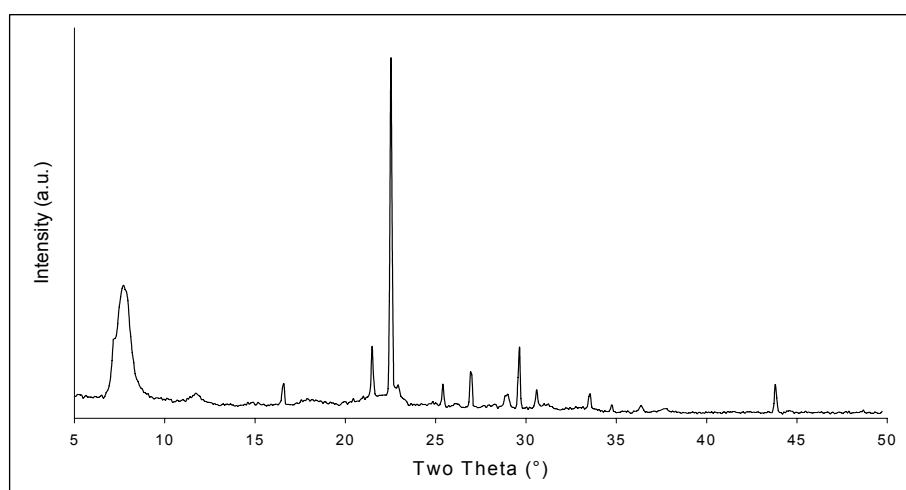
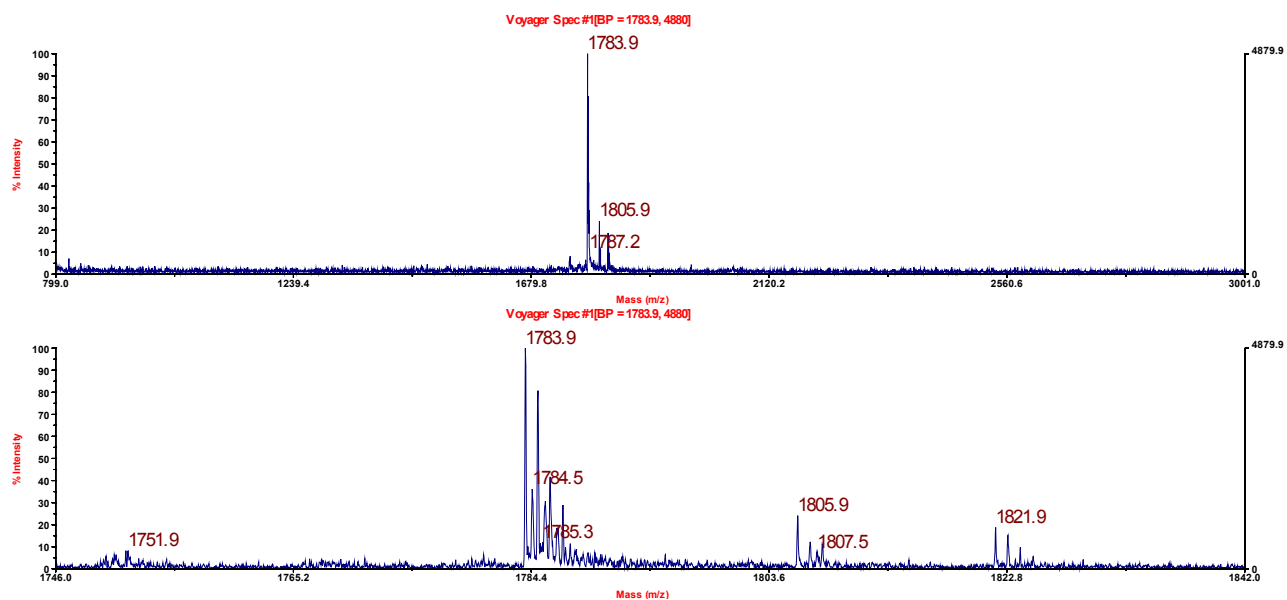


Figure S2 : X-ray diffraction of the silicalite-1 nanoparticles

Data for peptides 1 and 2

Peptide 2

MALDI-TOF spectrum of the RP-HPLC purified peptide 1 (α -cyano-4-hydroxycinnamic acid used as matrix). Voyager MALDI-TOF spectrometer (Applied Biosystems).



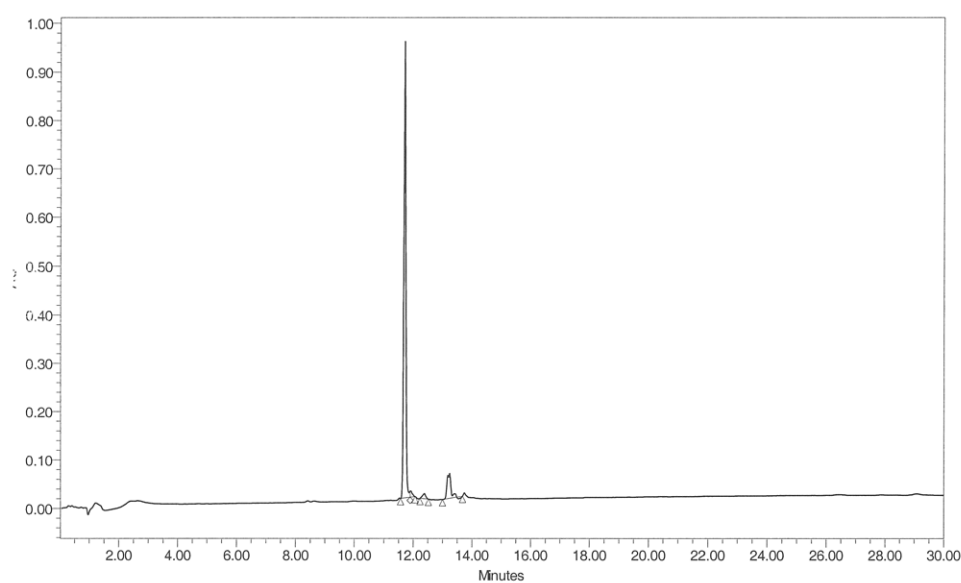
RP-HPLC analysis of the purified peptide 2

Eluent A: water containing 0.05% TFA

Eluent B: CH₃CN/water: 4/1 by vol containing 0.05% TFA

Linear gradient 0-100% B in 30 min, detection at 215 nm, 50°C

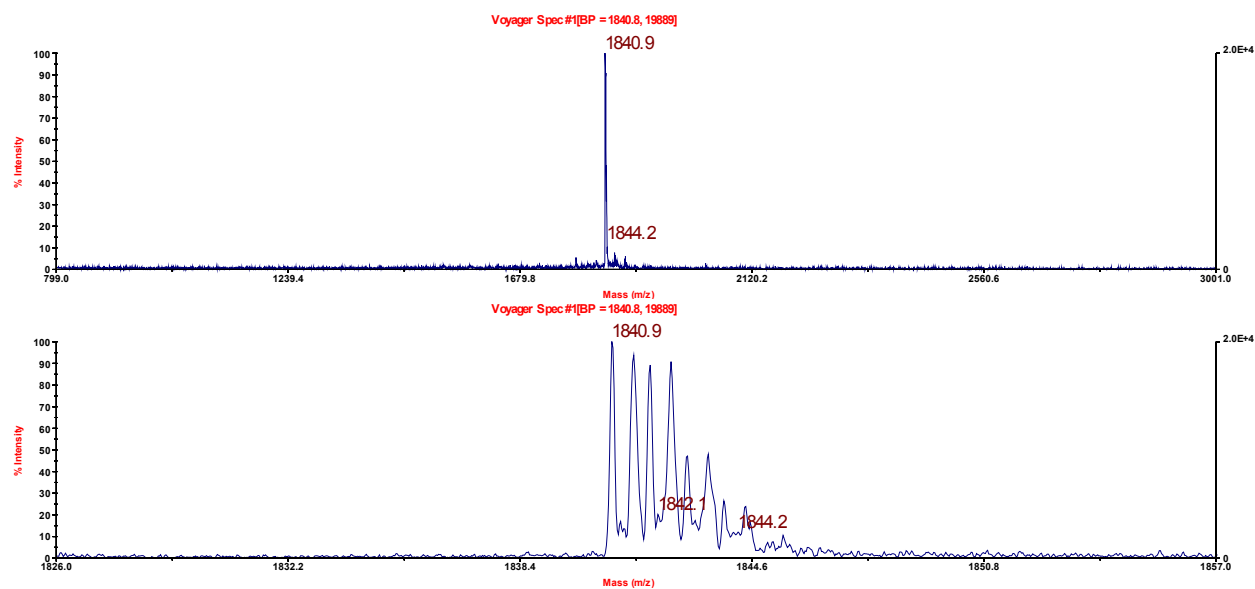
SAMPLE INFORMATION			
Sample Name:	CA15 gd linker COCHO 41 mg	Acquired By:	eric
Sample Type	Unknown	Date Acquired:	12/13/2006 2:52:09 PM
Vial:	30	Acq. Method Set:	30 min CH ₃ CN MS
Injection #:	1	Date Processed:	12/13/2006 3:33:57 PM
Injection Volume:	10.00 ul	Processing Method:	t
Run Time:	30.0 Minutes	Channel Name:	WvIn Ch1
Sample Set Name:	ca15 a15	Proc. Chnl. Descr.:	PDA 215.0 nm
Colonne	C18 Symetrie	Temperature	50 C
Solvent H ₂ O/TFA 0.05%/CH ₃ CN 80%			



	RT	Area	% Area	Height
1	11.701	4545080	87.39	923628
2	11.917	61842	1.19	13063
3	12.379	80597	1.55	10486
4	13.241	513316	9.87	51387

Peptide 1

MALDI-TOF spectrum of the RP-HPLC purified peptide (α -cyano- β -hydroxycinnamic acid used as matrix). Voyager MALDI-TOF spectrometer (Applied Biosystems).



RP-HPLC analysis of the purified peptide 1

Eluent A: water containing 0.05% TFA

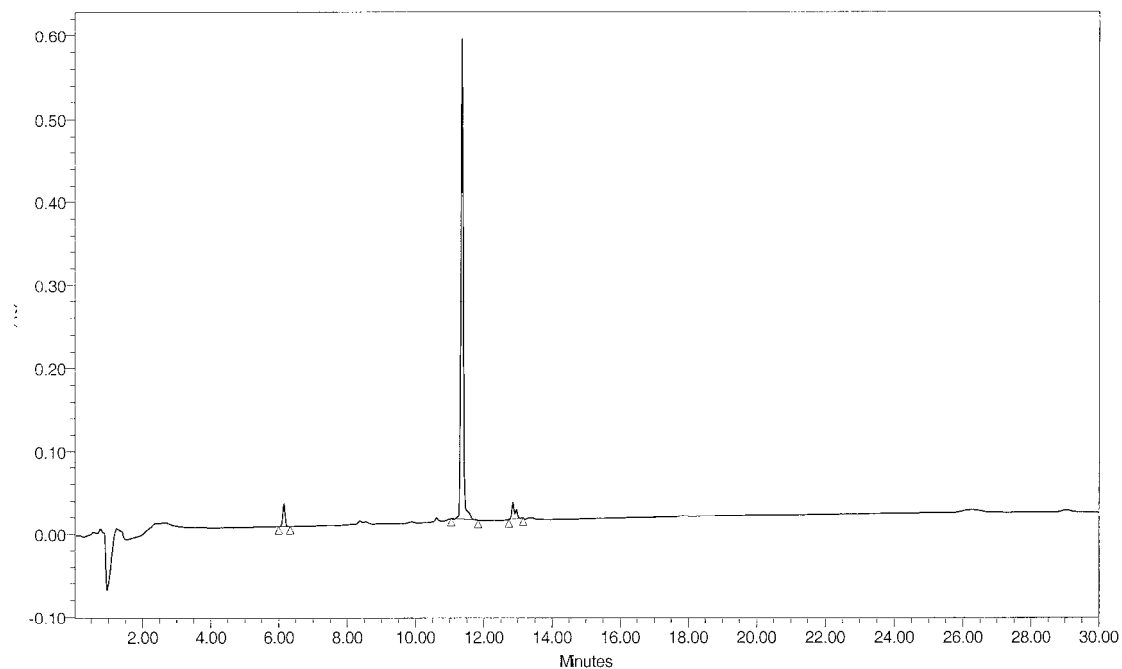
Eluent B: CH₃CN/water: 4/1 by vol containing 0.05% TFA

Linear gradient 0-100% B in 30 min, detection at 215 nm, 50°C

SAMPLE INFORMATION

Sample Name:	A15 gd linker COCHO 15 mg	Acquired By:	eric
Sample Type:	Unknown	Date Acquired:	12/13/2006 2:14:28 PM
Vial:	29	Acq. Method Set:	30 min CH ₃ CN MS
Injection #:	1	Date Processed:	12/13/2006 3:33:29 PM
Injection Volume:	80.00 ul	Processing Method:	t
Run Time:	30.0 Minutes	Channel Name:	Wvl1 Ch1
Sample Set Name:	ca15 a15	Proc. Chnl. Descr.:	PDA 215.0 nm
Colonne:	C18 Symetrie	Temperature:	50 C

Solvent H₂O/TFA 0.05%/CH₃CN 80%



	RT	Area	% Area	Height
1	6.152	131048	4.17	27864
2	11.356	2865042	91.21	572686
3	12.852	144943	4.61	20170