

Fig. S1: Synchrotron powder diffraction pattern obtained at the Advanced Photon Source, Argonne National Laboratory ($\lambda = 0.61936\text{\AA}$).

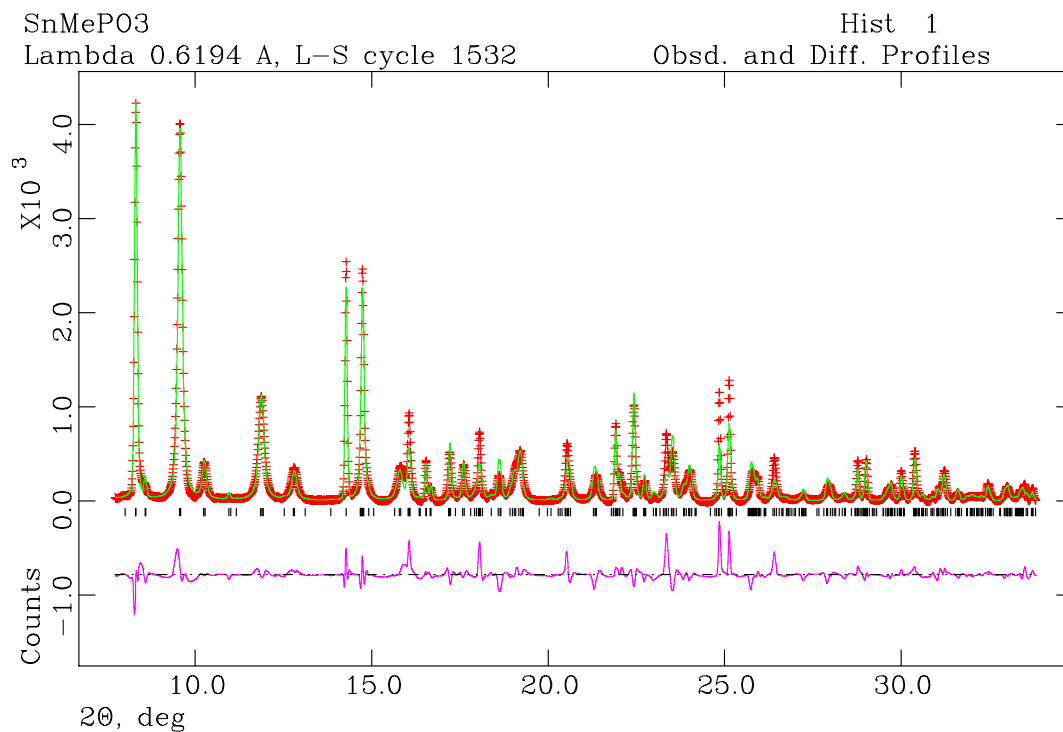


Fig. S2: Observed (+) and calculated (solid line) and difference profiles for the Rietveld refinement of Sn(O₃PCH₃)₂.

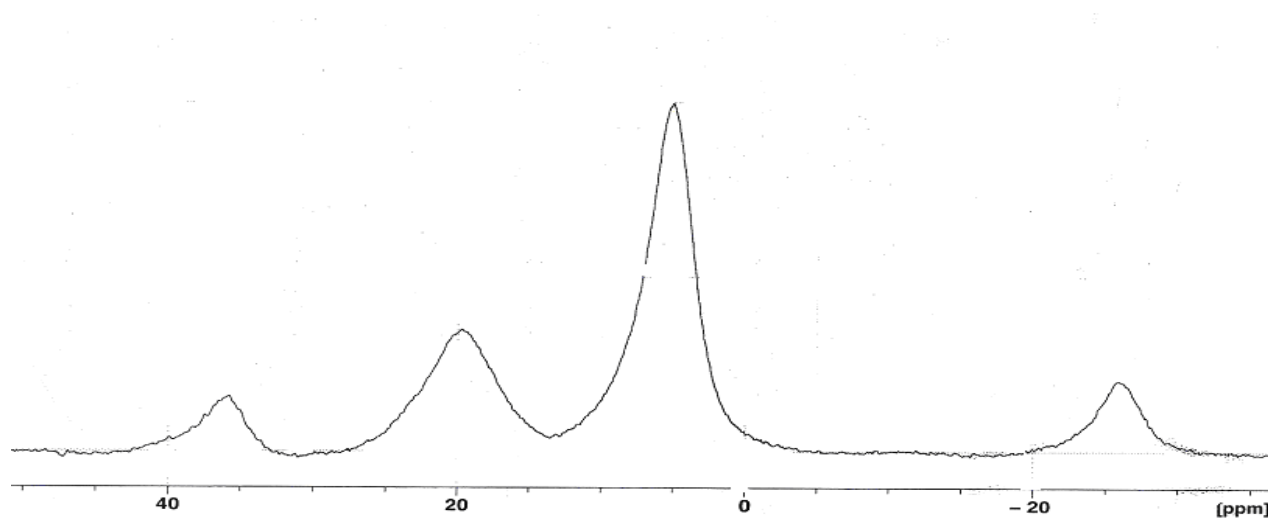


Fig. S3. ^{31}P MAS NMR spectrum for the mixed derivative $\text{Sn}(\text{O}_3\text{PC}_{12}\text{H}_8\text{PO}_3)_{0.65}(\text{O}_3\text{PC}_{12}\text{H}_8\text{PO}_3\text{H}_2)_{0.2}(\text{O}_3\text{PCH}_3)_{0.5} \cdot 0.43\text{DMSO}$. The methyl phosphorous is at 20ppm and the biphenyl ^{31}P at 5ppm.