

Supplementary data

Formation of banana phases in bent-shaped molecules with unusual bent angle as low as 60°

Seng Kue Lee,* Xiaodong Li, Sungmin Kang, Masatoshi Tokita and Junji Watanabe

Department of Organic and Polymeric Materials, Tokyo Institute of Technology,

2-12-1 O-okayama, Meguro-ku, Tokyo 152-8552, Japan

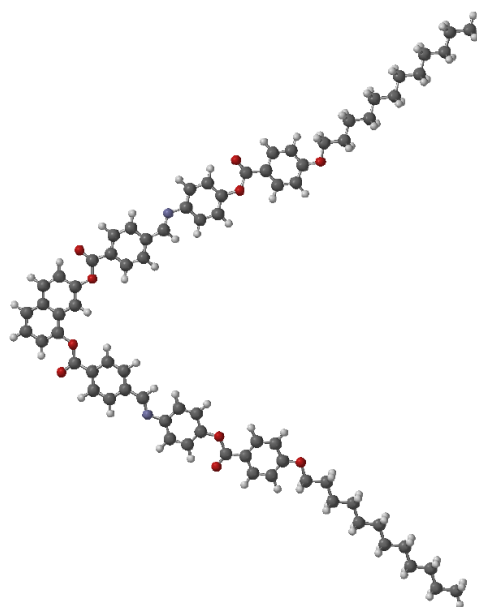


Figure S1. The all-*trans* conformation of N(1,7)-12