

Supporting Information

On the Synergistic Coupling Properties of Composite CdS/TiO₂ Nanoparticle Arrays Confined in Nanopatterned Hybrid Thin Films

Dinakaran Kannaiyan,¹ Eunhye Kim,² Nayoun Won,³ Kang Wook Kim,³ Yoon Hee Jang,¹ Min-Ah Cha,¹ Du Yeol Ryu,² Sungjee Kim³ and Dong Ha Kim^{1*}

¹Department of Chemistry and Nano Science, Ewha Womans University, 11-1 Daehyun-dong, Seodaemun-gu, Seoul 120-750, Korea

²Department of Chemical and Biomolecular Engineering, Yonsei University, 262 Seongsanno, Seodaemun-gu, Seoul 120-749, Korea

³Department of Chemistry, Pohang University of Science and Technology, San 31 Hyoja-dong, Nam-gu, Pohang, Kyungbuk 790-784, Korea

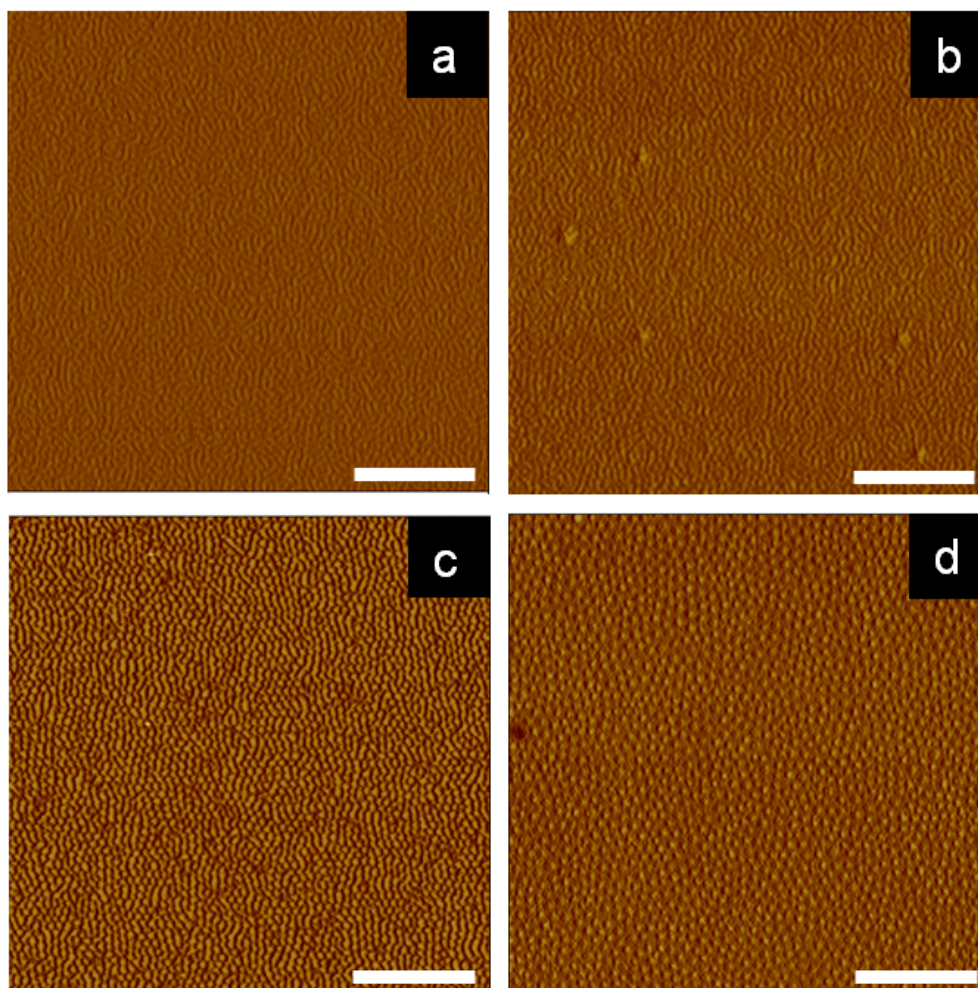


Figure S1. Phase contrast AFM images of PS-*b*-PEO/TiO₂/CdS thin films of the following compositions spin coated on silicon wafers: (a) PS-*b*-PEO/TiO₂5, (b) SEO/TiO₂10, (c) SEO/TiO₂10/CdS 0.25 and (d) SEO/TiO₂10/CdS0.5. The scale bar represents 500 nm in length.

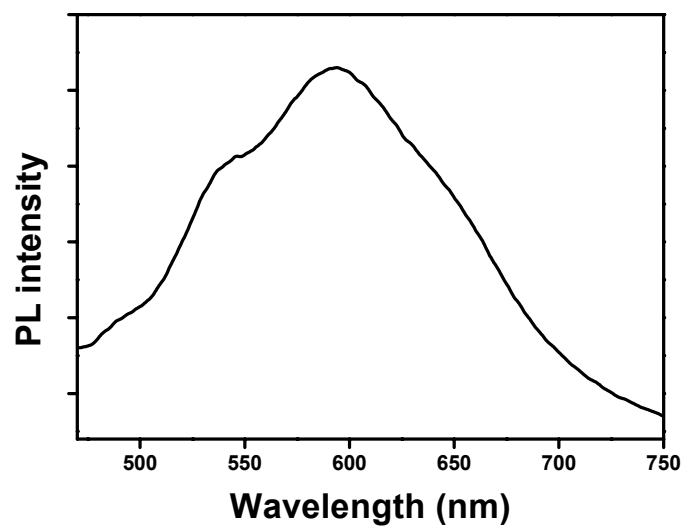


Figure S2. Photoluminescence (PL) spectrum of CdS NPs in DMF