

Supporting information

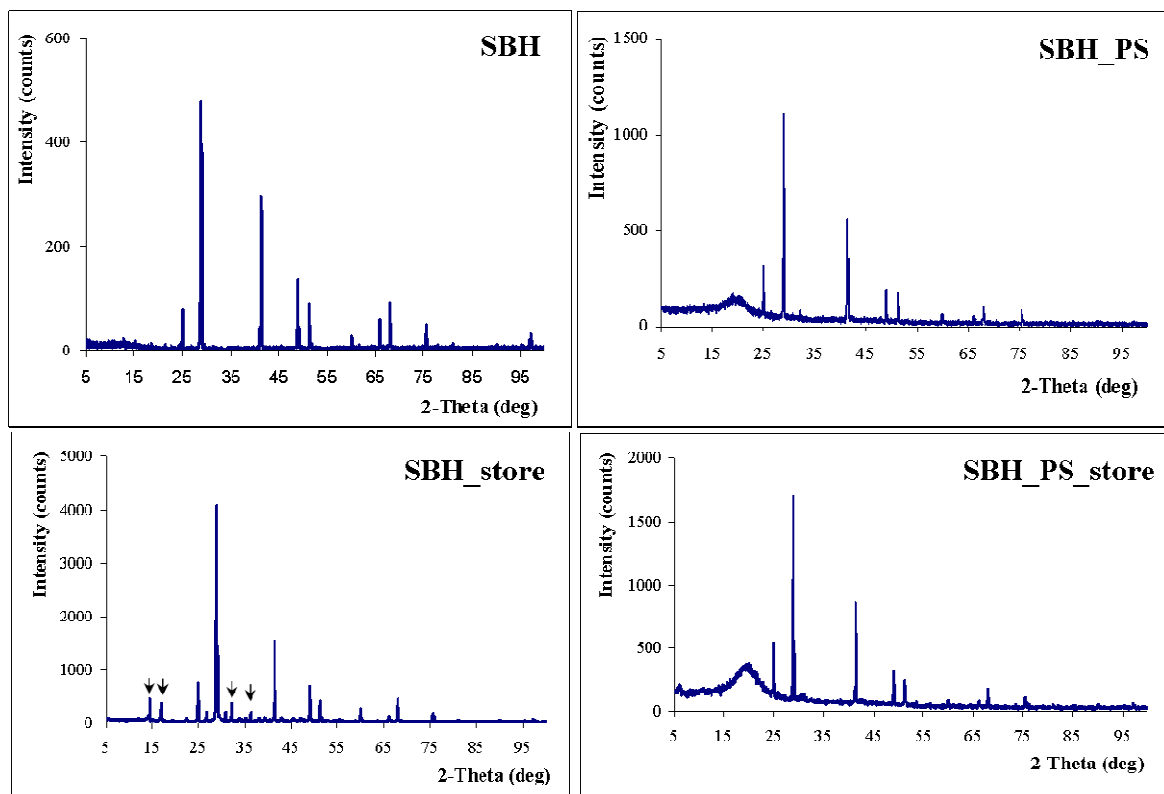


Figure. XRD patterns of pristine sodium borohydride and microcontainers before and after storage at outdoor conditions for 4 h. The arrows in the lower left pattern point to peaks developing upon reaction with water. A broad signal at $2\theta = 20^\circ$ in the microcontainer pattern corresponds to the amorphous PS matrix.¹³