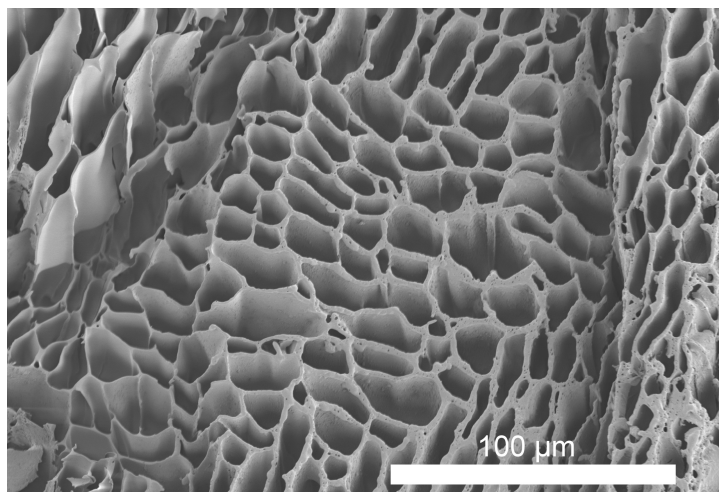
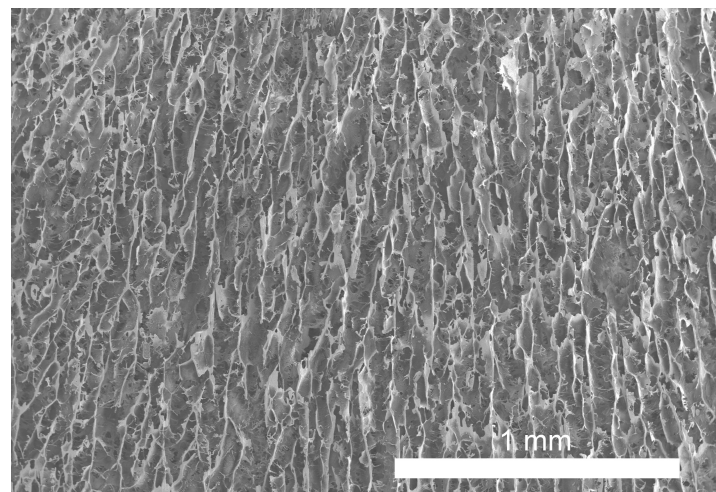


Starch foam



Composite foam (MFC/PAP, 60/40)



**Fig. S1.** FE-SEM micrographs of typical cell structures observed in neat starch foams and composites foams (60 wt% cellulose nanofibers) obtained in *freeze-drying experiments*. The freeze-drying temperature used to obtain the presented foams was - 45 °C. The scale bars are 1 mm (composite foam) and 100  $\mu\text{m}$  (starch foam).