

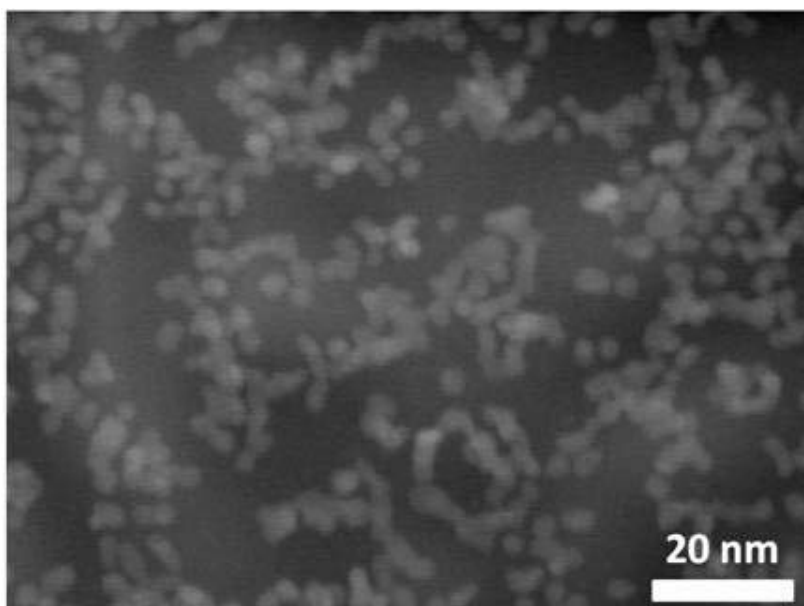
Tailoring the Magnetic Properties of Nickel Nanoshells through Controlled Chemical Growth

Marcos Sanles-Sobrido,^a Manuel Bañobre-López,^b Veronica Salgueirino,^{c*} Miguel A. Correa-Duarte,^{a*} Benito Rodríguez-González,^a José Rivas^b and Luis M. Liz-Marzán^a

Received (in XXX, XXX) Xth XXXXXXXXXX 200X, Accepted Xth XXXXXXXXXX 200X

First published on the web Xth XXXXXXXXXX 200X

DOI: 10.1039/b000000x



10

Figure S1. STEM image of the Pt nanoparticles deposited onto the surface of the colloidal PS beads.

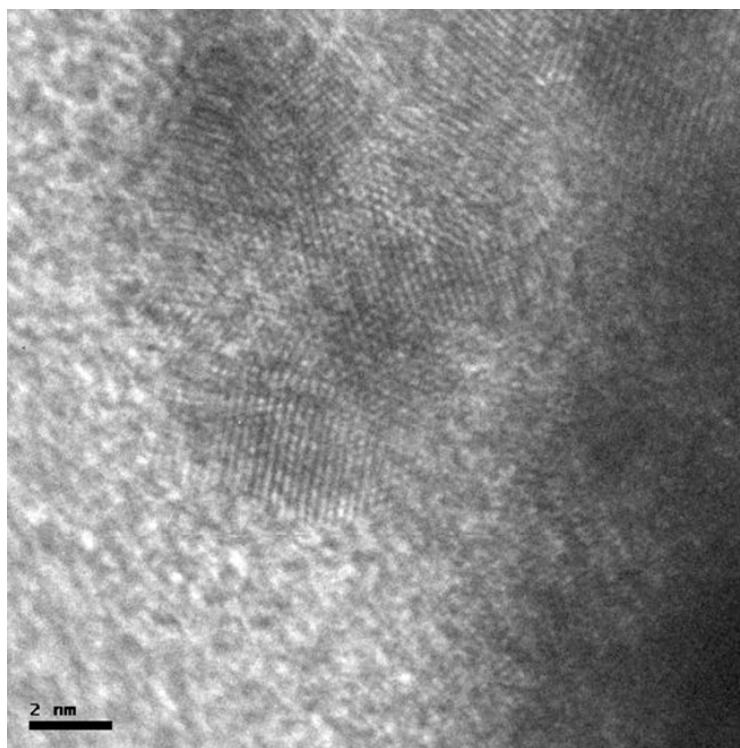


Figure S2. HRTEM image showing the polycrystalline nature of the Ni deposited onto the PS/Pt particles.

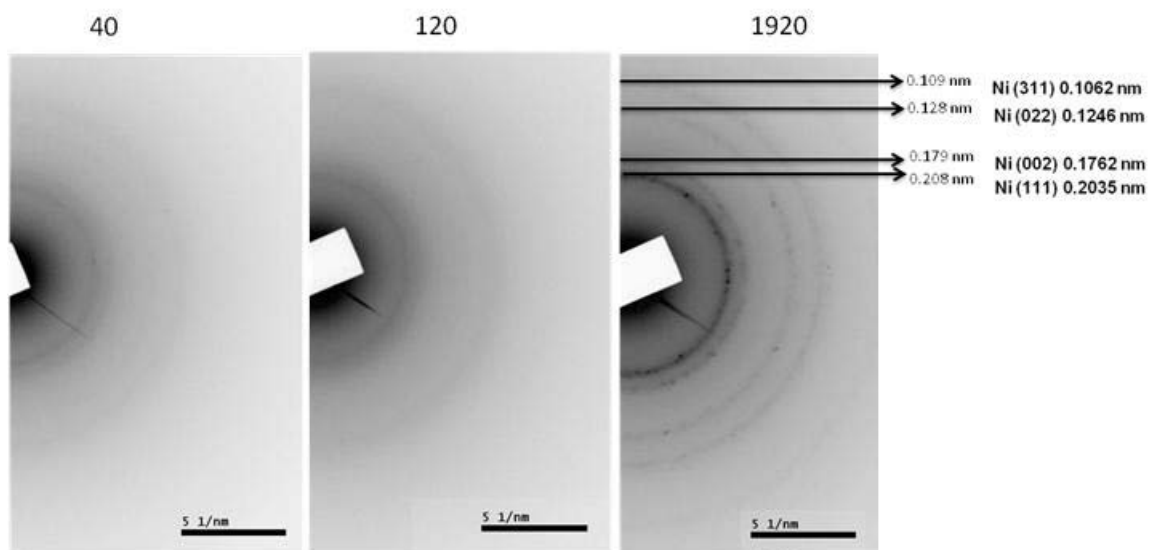


Figure S3. SAED analysis of PS/Pt/Ni composite particles with different PS:Ni weight ratio, 6:1 (a) 10:1 (b), 1:6 (c).