

Supplementary Information

Assembly of poly(methacrylate)/purple membrane lamellar nanocomposite films by intercalation and *in-situ* polymerisation

Andrew M. Collins, Noor Haida Mohd Kaus, Francesca Speranza, Wuge H. Briscoe, Daniel Rhinow, Norbert Hampp, Stephen Mann^{*}

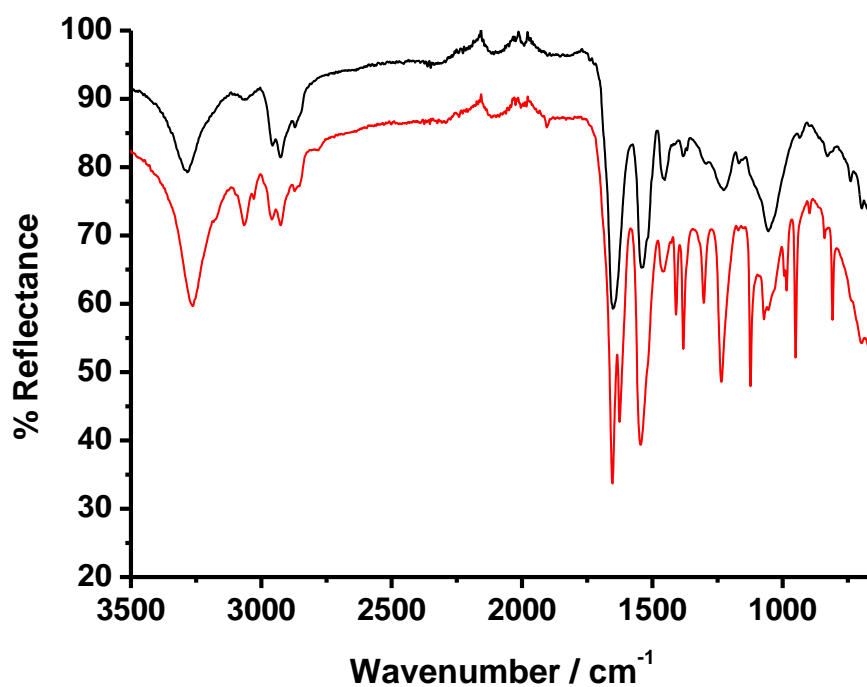


Figure S1. ATR-FTIR spectra of a PM-WT control film (black) and a polyMA/PM-WT composite film (red).

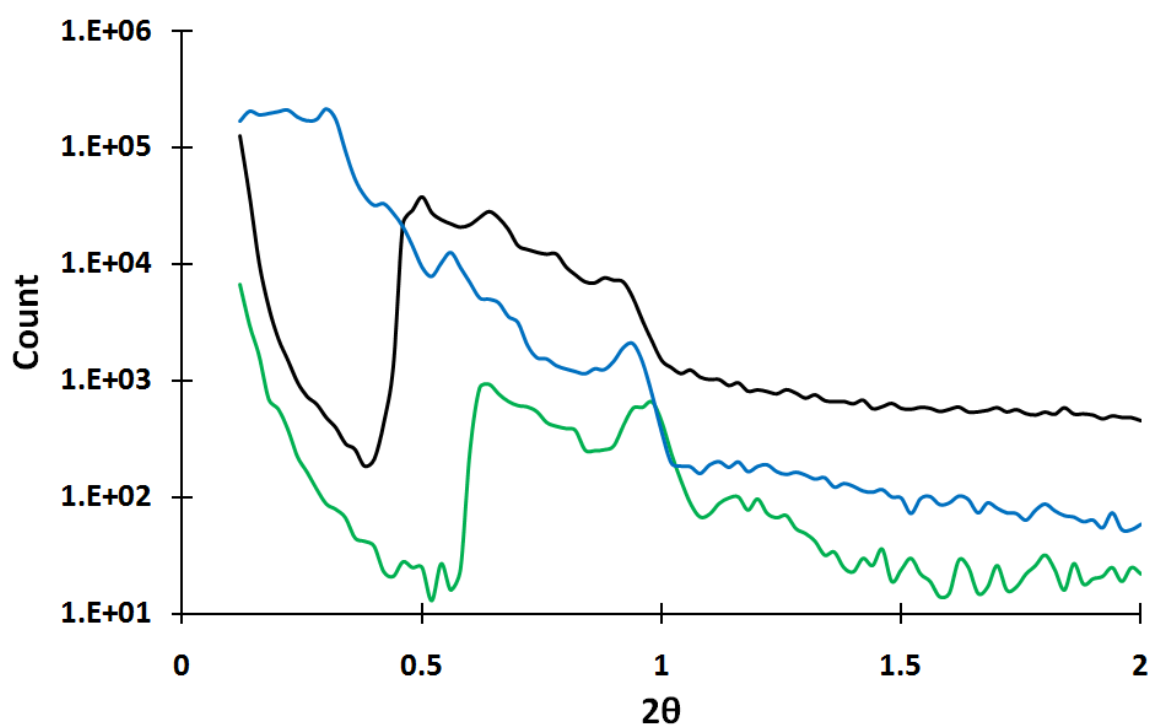


Figure S2. Off specular XRR scans for polyMA : PM ratio 1.2 : 1 composite films showing a range of interlayer peaks. Although the reflections are observed at a lower angle than for native (non-intercalated) PM , the three repeated scans show some variance in the peak positions.