

Supporting Information

Molecular based, chimie douce approach to 0D and 1D indium oxide nano-structures. Evaluation of their sensing properties towards CO and H₂

Mikhail Pashchanka, Rudolf C. Hoffmann, Aleksander Gurlo *and* Jörg J. Schneider*

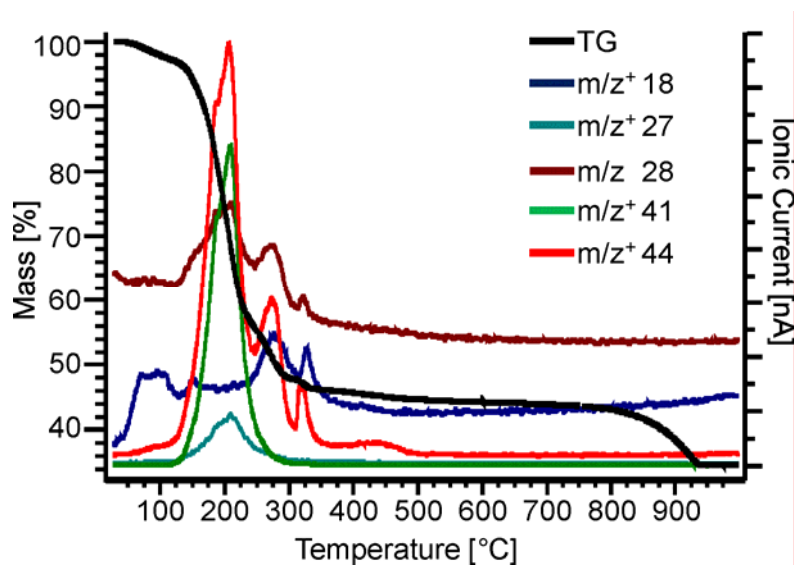


Figure 1. TG-coupled MS of Tris[2-(methoxyimino)propanoato]indium in oxygen.

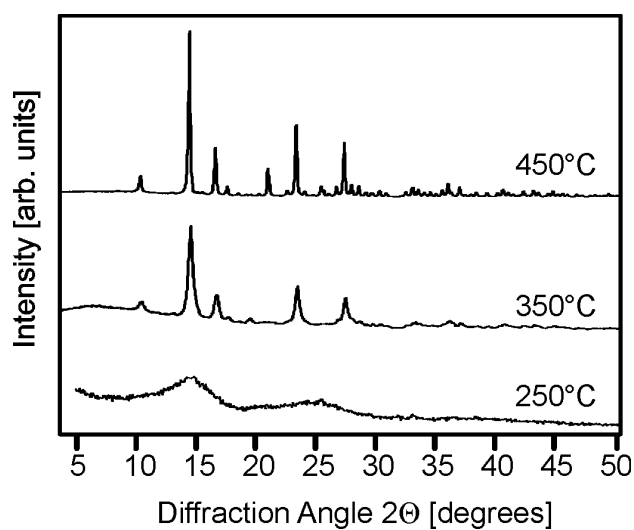


Figure 2. XRD patterns of the decomposition of precursor (**1**) calcined at various temperatures for 30 minutes in air

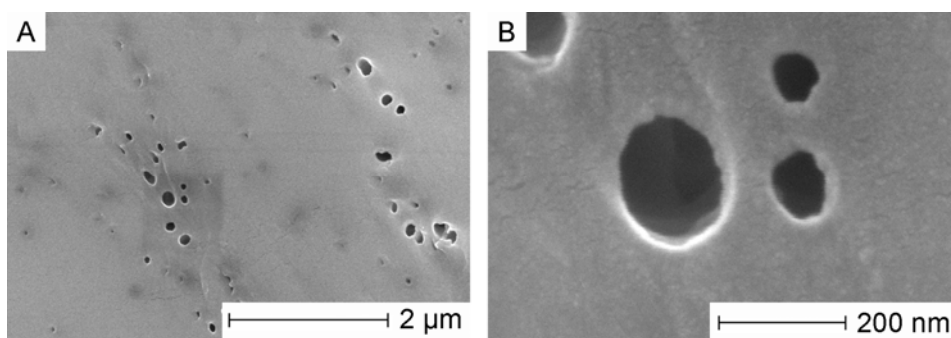


Figure 3. SEM pictures of the surface of Whatman Nuclepore® filters, nominal pore size 0.1 μm .

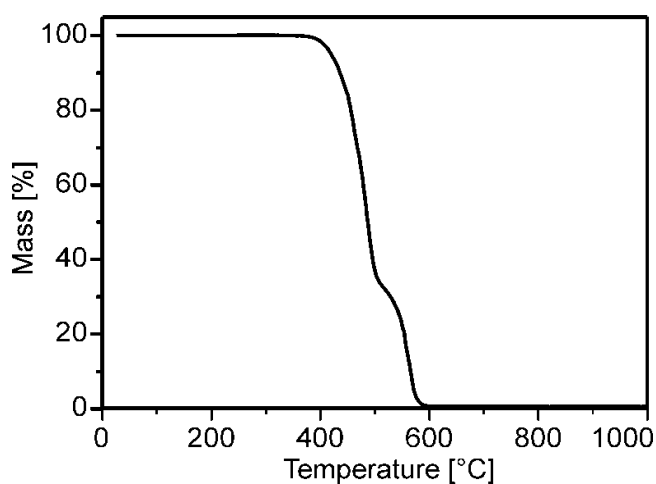


Figure 4. TG curve of Whatman Nuclepore template with nominal pore size 0.1 μm analysed in oxidizing atmosphere