

Supplementary Information for

Electrically conductive and mechanically strong biomimetic chitosan/reduced graphene oxide composite films

Xiluan Wang, Hua Bai, Zhiyi Yao, Anran Liu, Gaoquan Shi*

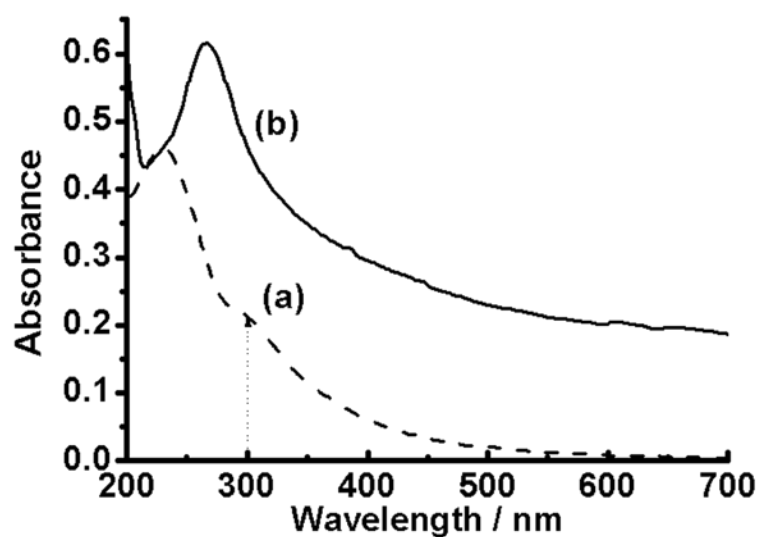


Fig. S1 UV-visible spectra of graphene oxide dispersion stabilized with $\text{EO}_{133}\text{PO}_{50}\text{EO}_{133}$ before (a) and after (b) reduction.

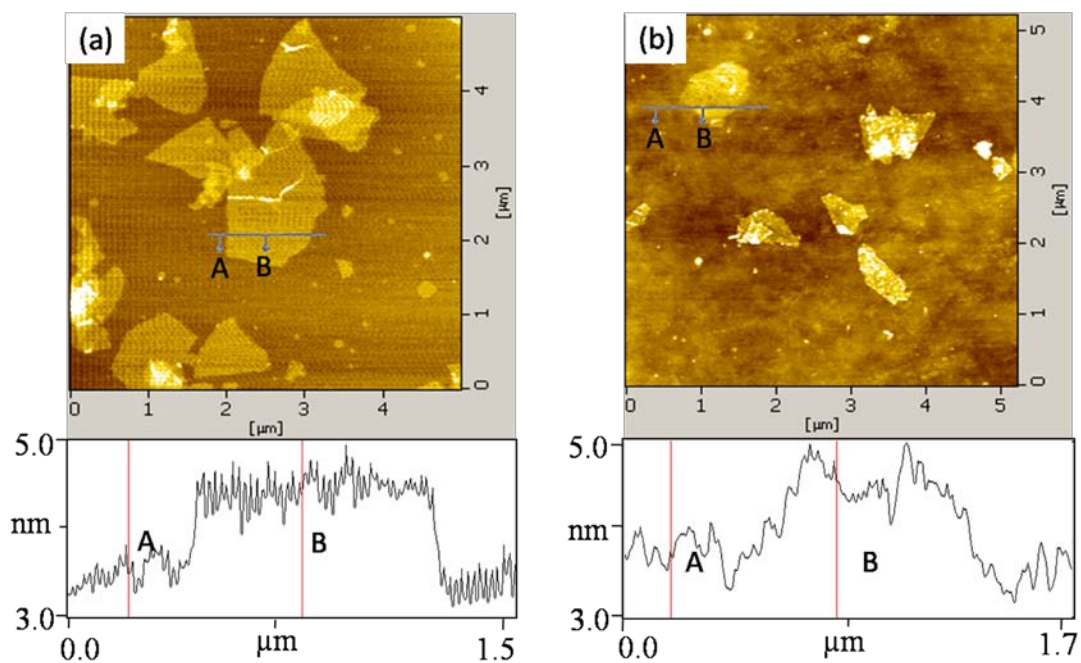


Fig. S2 Tapping-mode AFM images of (a) graphene oxide and (b) RGO sheets with height profiles. The thickness of a graphene oxide or RGO sheet is about 1 nm, suggesting a monolayer structure.¹

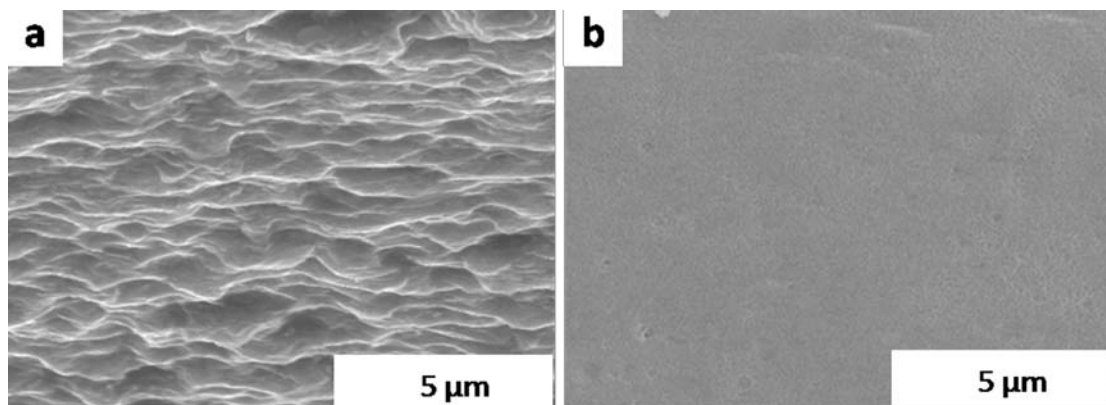


Fig. S3 Cross-section SEM images of (a) CTS/6 wt% RGO and (b) chitosan films.

Reference

1. S. Z. Zu and B. H. Han, *J. Phys. Chem. C*, 2009, **113**, 13651.