

Supplementary Information

Solution-phase, dual LSPR-SERS plasmonic sensors of high sensitivity and stability based on chitosan-coated anisotropic silver nanoparticles

Monica Potara^{*}, Ana-Maria Gabudean and Simion Astilean^{*}

Nanobiophotonics Center, Institute for Interdisciplinary Experimental Research in Bionanoscience and
Faculty of Physics, Babes-Bolyai University, Treboniu Laurian Street 42, 400271 Cluj-Napoca,
Romania.

E-mail: monica.potara@phys.ubbcluj.ro and simion.astilean@phys.ubbcluj.ro

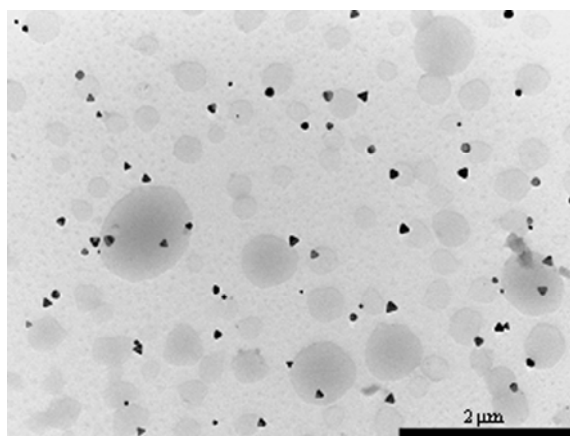


Figure S1 Representative TEM image of sample prepared with 38.8 mM sodium citrate concentration.

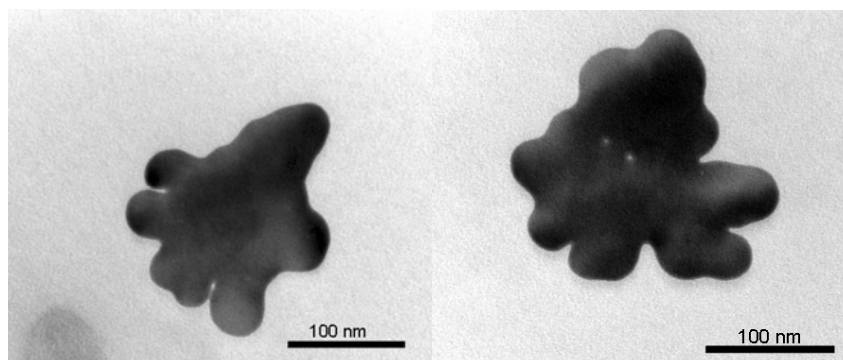


Figure S2 Representative TEM images of sample obtained with a sodium citrate concentration beyond 38.8 mM.