

Electronic Supplementary Information for

Monolithic Electrode for Electric Double-Layer Capacitors Based on Macro/meso/microporous S-Containing Activated Carbon with High Surface Area

By *George Hasegawa, Mami Aoki, Kazuyoshi Kanamori,* Kazuki Nakanishi, Teiichi Hanada and Kiyoharu Tadanaga*

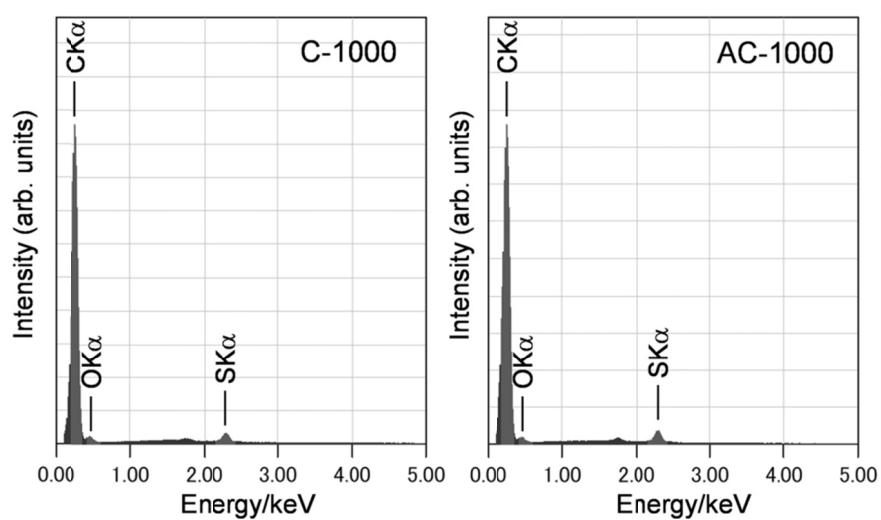


Figure S1 Energy dispersive X-ray spectroscopy (EDS) analysis results of C-1000 and AC-1000.

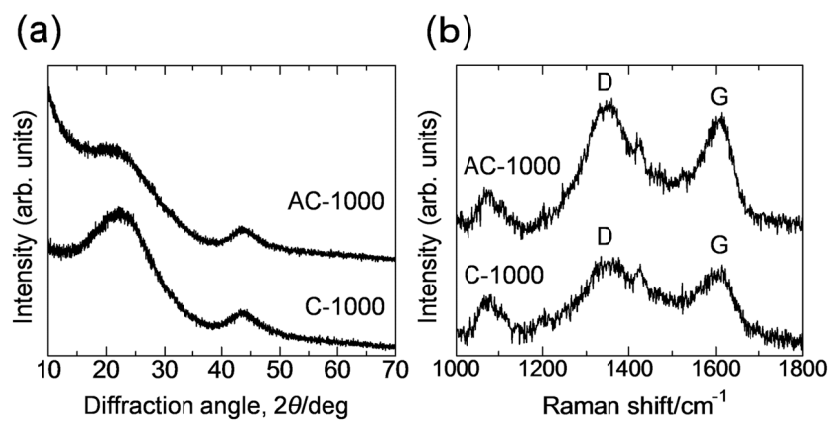


Figure S2 XRD patterns (a) and Raman spectra (b) of C-1000 and AC-1000.