

Supplementary Data

**Dye-sensitized solar cells with TiO₂ nano-particles on TiO₂
nano-tube-grown Ti substrates**

Ho-Gyeong Yun,* et al.

*Convergence and Components & Materials Research Lab., Electronics and Telecommunications
Research Institute (ETRI), Daejeon, 305-350, Korea.*

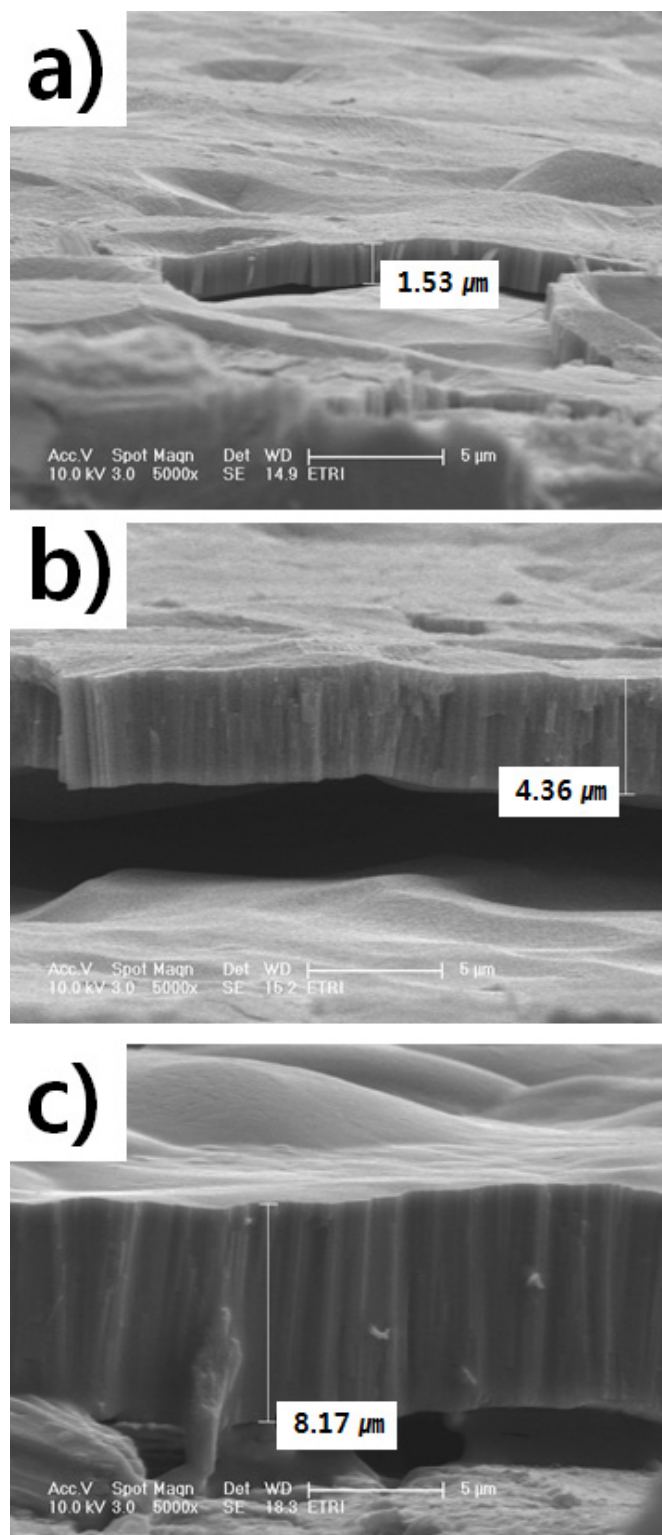


Figure S-1. Cross-sectional SEM images of the TiO₂ NT layer. The anodizing times were (a) 15 min, (b) 30 min, and (c) 60 min.