

Supporting Information

Morphology and Chirality Controlled Self-assembled Nanostructures of Porphyrin-pentapeptide Conjugate: Effect of the Peptide Secondary Conformation

Quanbo Wang, Yanli Chen, Pan Ma, Jitao Lu, Xiaomei Zhang,* and Jianzhuang
Jiang*

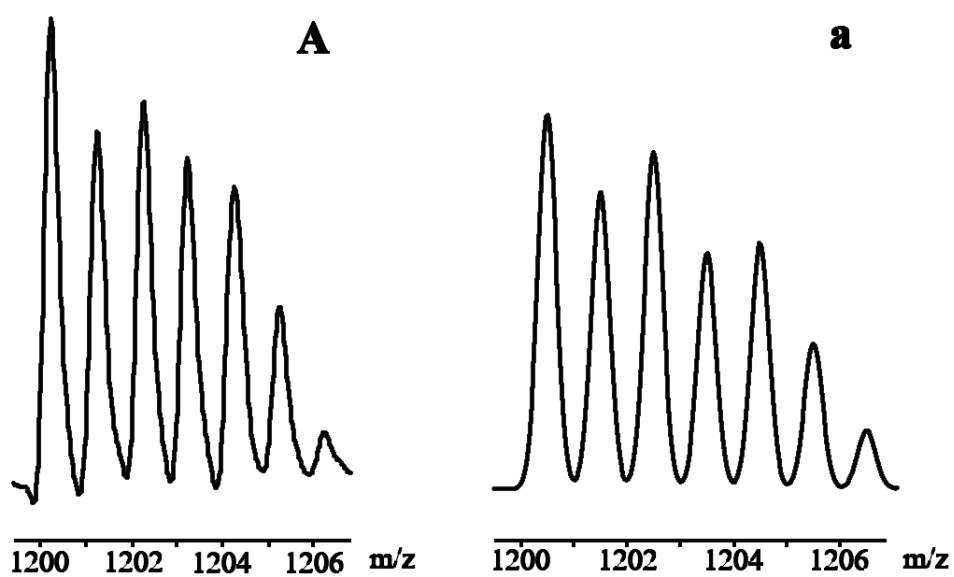


Figure S1. (A) Experimental and (a) simulated isotopic patterns for the molecular ion of porphyrin-pentapeptide conjugate **1**.

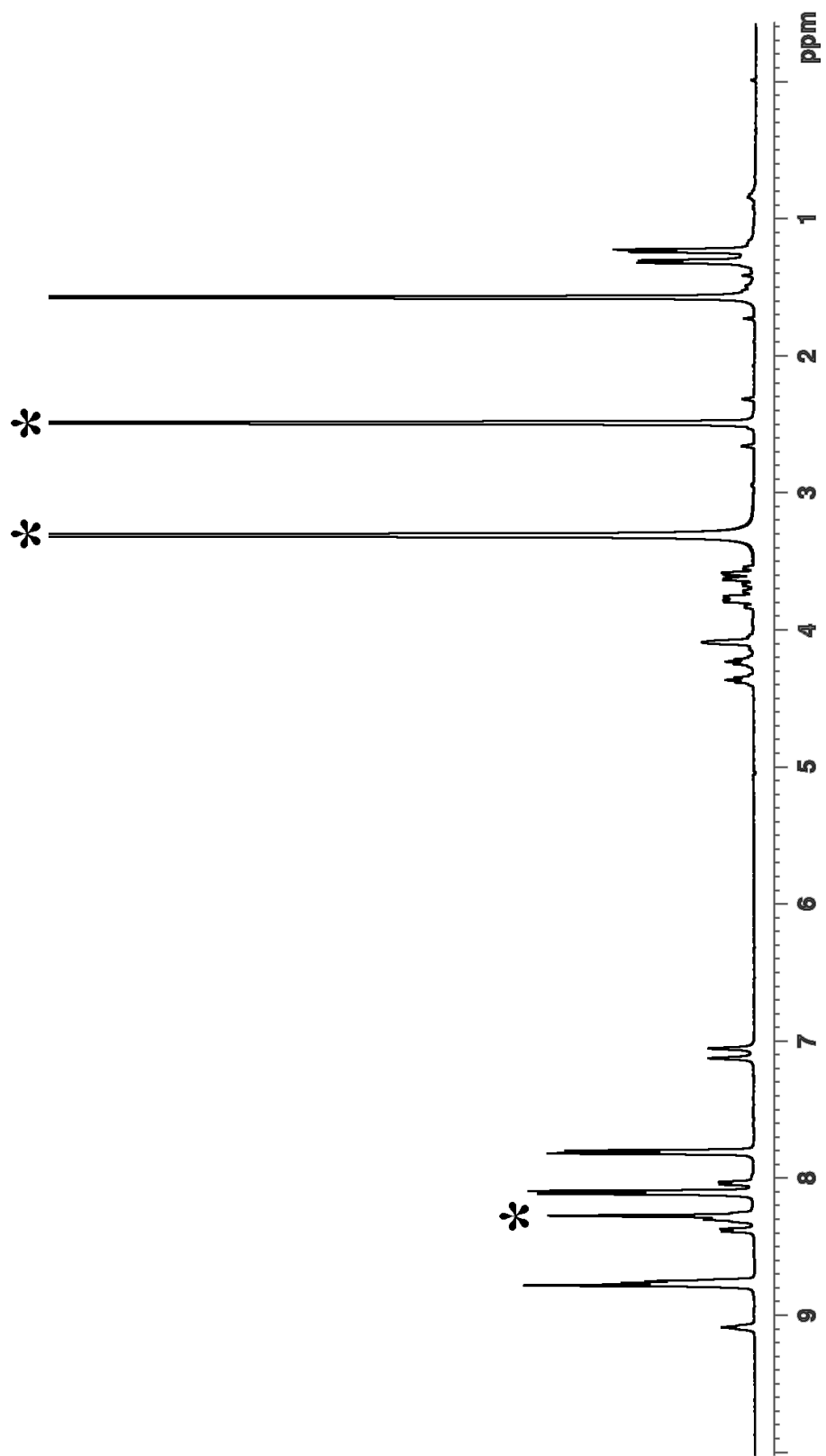


Figure S2. ^1H NMR spectra of porphyrin-pentapeptide conjugate **1** in d_6 -DMSO. * indicates solvent impurities.

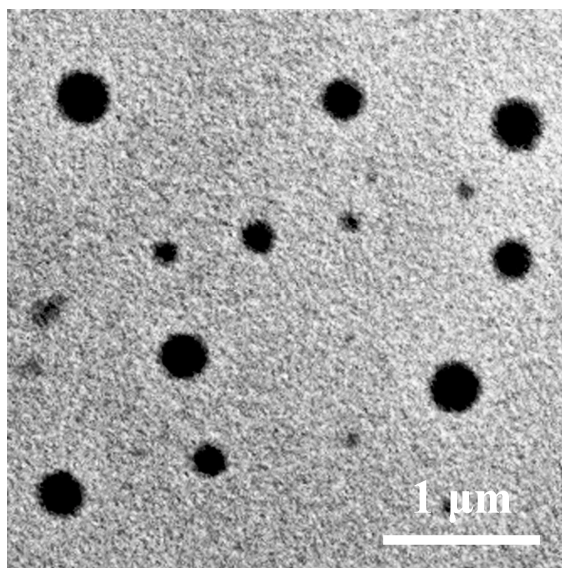


Figure S3. Nanoparticles fabricated from Zn[T(COOH)PP] in THF/*n*-hexane solution (1:3) observed by TEM.

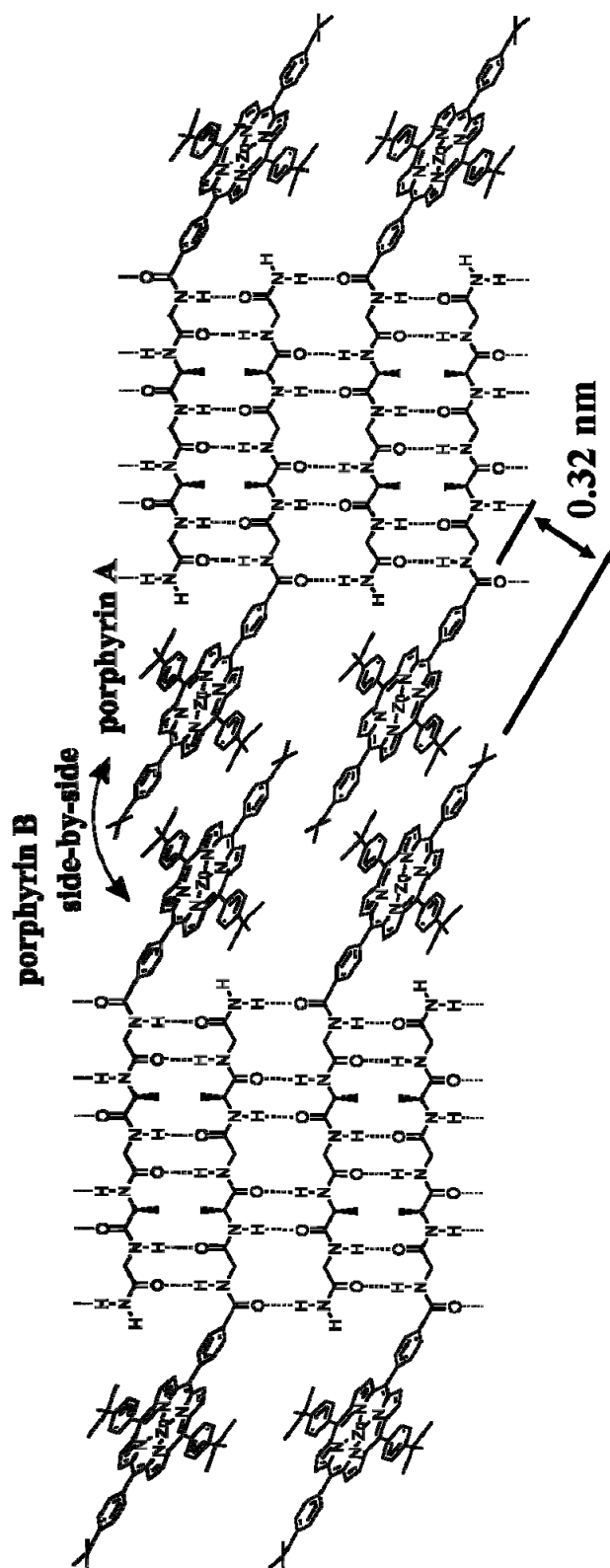


Figure S4. Schematic representation of two one-dimensional supramolecular chains in the nanotubes fabricated from conjugate **1** in THF/water solution (1:3).

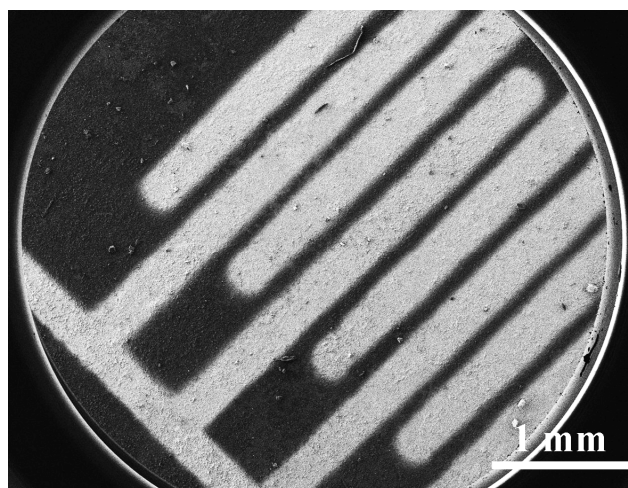


Figure S5. SEM image of two-electrode device fabricated on SiO₂.

Table S1. Electronic absorption data of porphyrin-pentapeptide conjugate **1** in THF and its aggregates dispersed in *n*-hexane and water.

Compound	$\lambda_{\text{max}} / \text{nm}$		
	THF	<i>n</i> -hexane	water
1	419, 504, 545, 582	439, 505, 546, 583	395, 443, 510, 554, 587