

Supporting Information

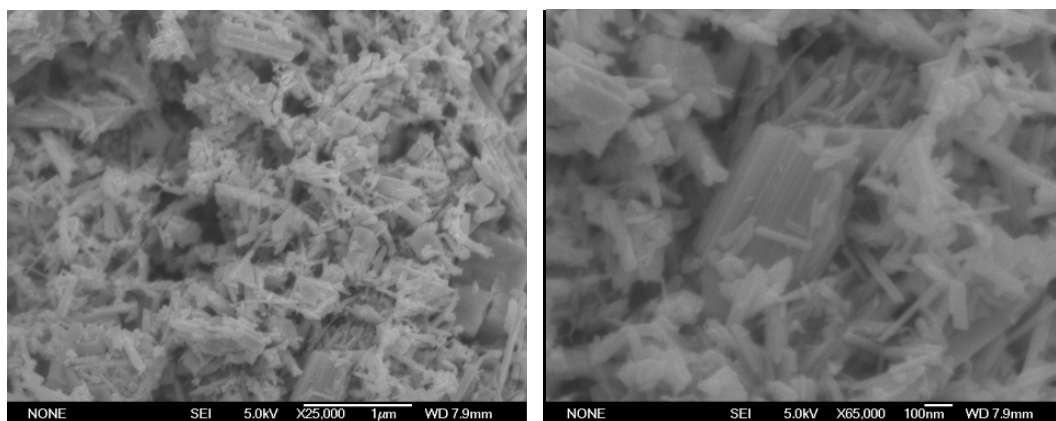


Figure S1. SEM images of the product after reacting for 12 h in the hydrothermal process, revealing the formation of short InOOH nanorods.

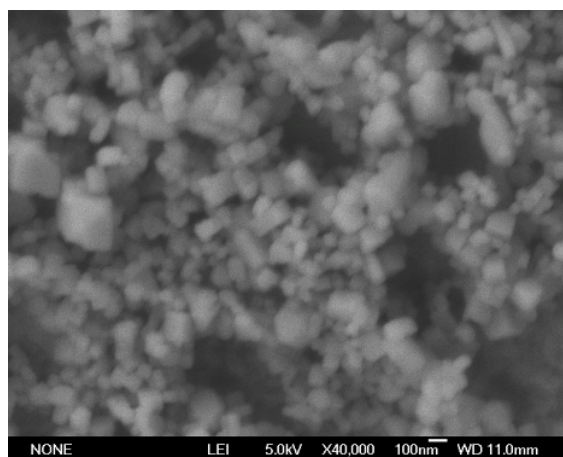


Figure S2. SEM image of the product when the amount of distilled water was increased, showing the formation of InOOH nanoparticles.

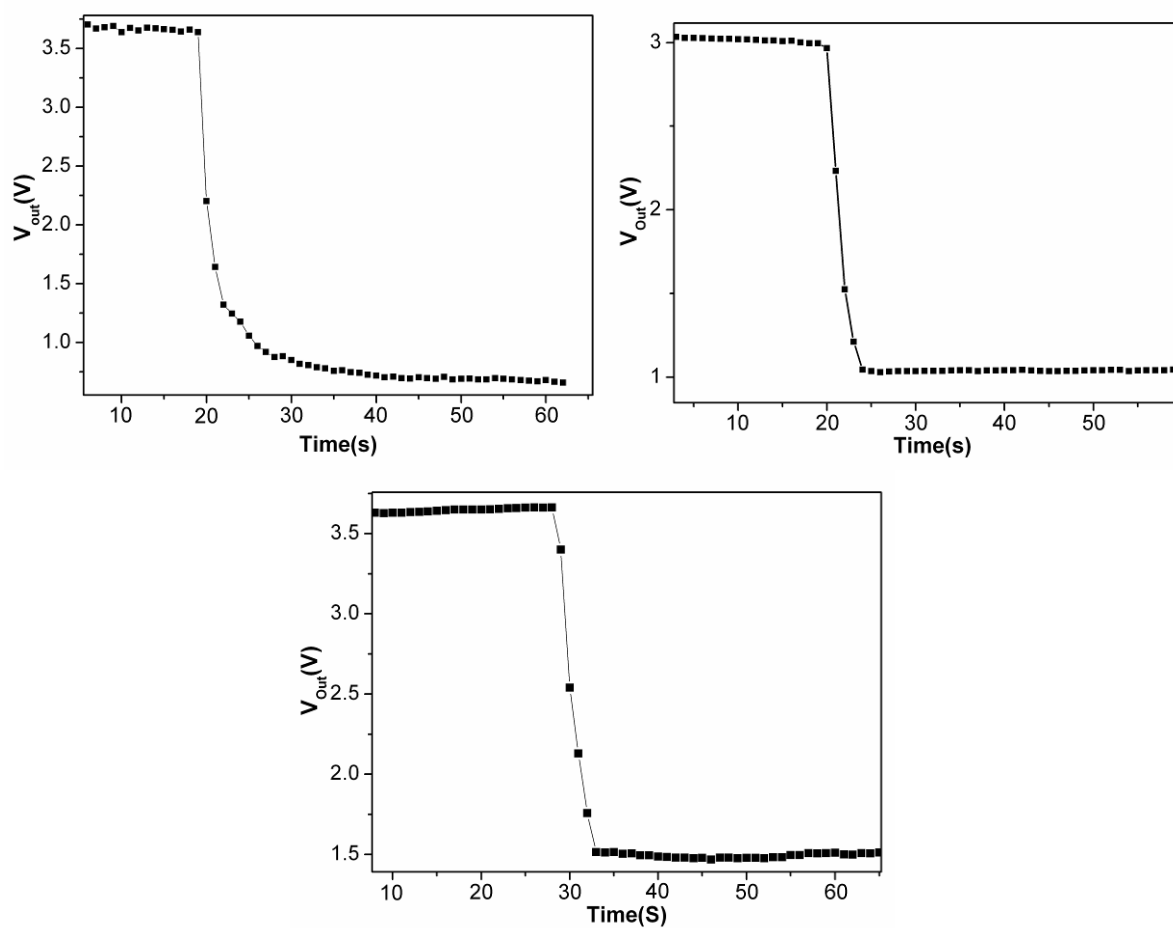


Figure S3. Sensing response of the sensors to 20 ppm (a) ethanol, (b) methanol, and (c) acetone. All the curves reveal very fast response time shorter than 10 s.

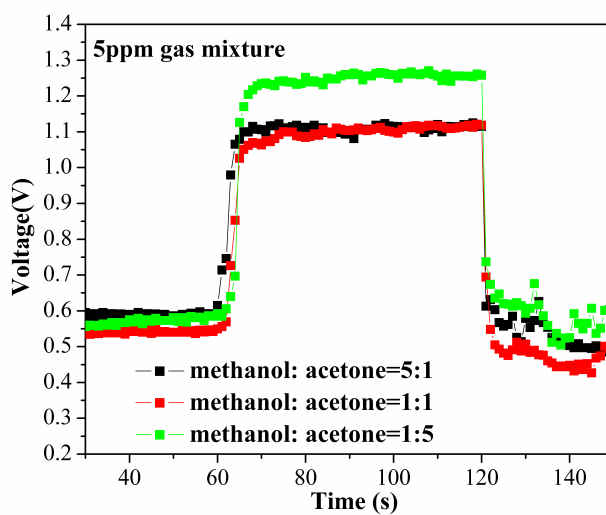


Figure S4. Sensing response of the sensors to the mixture of methanol and acetone with different volume ratios.