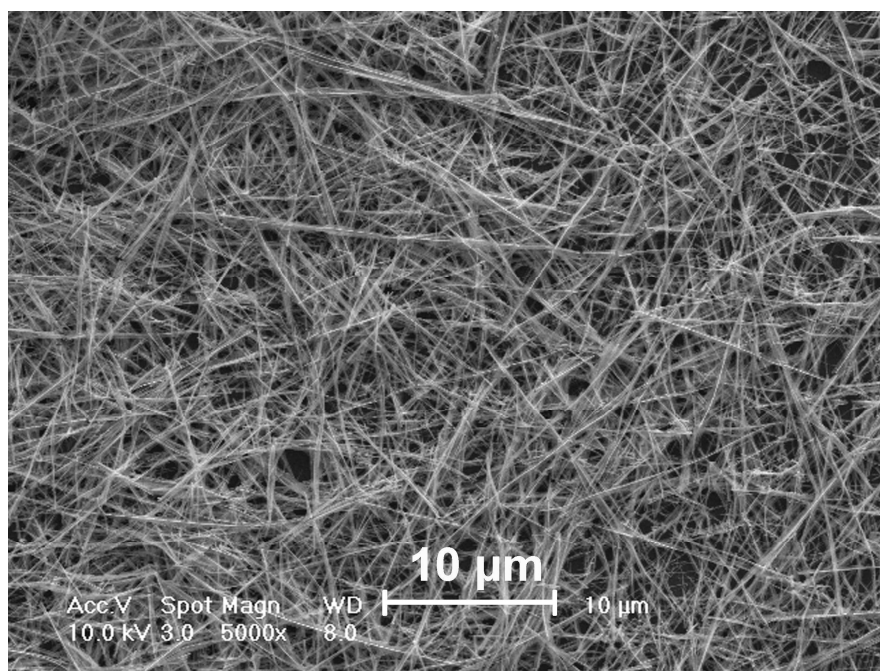


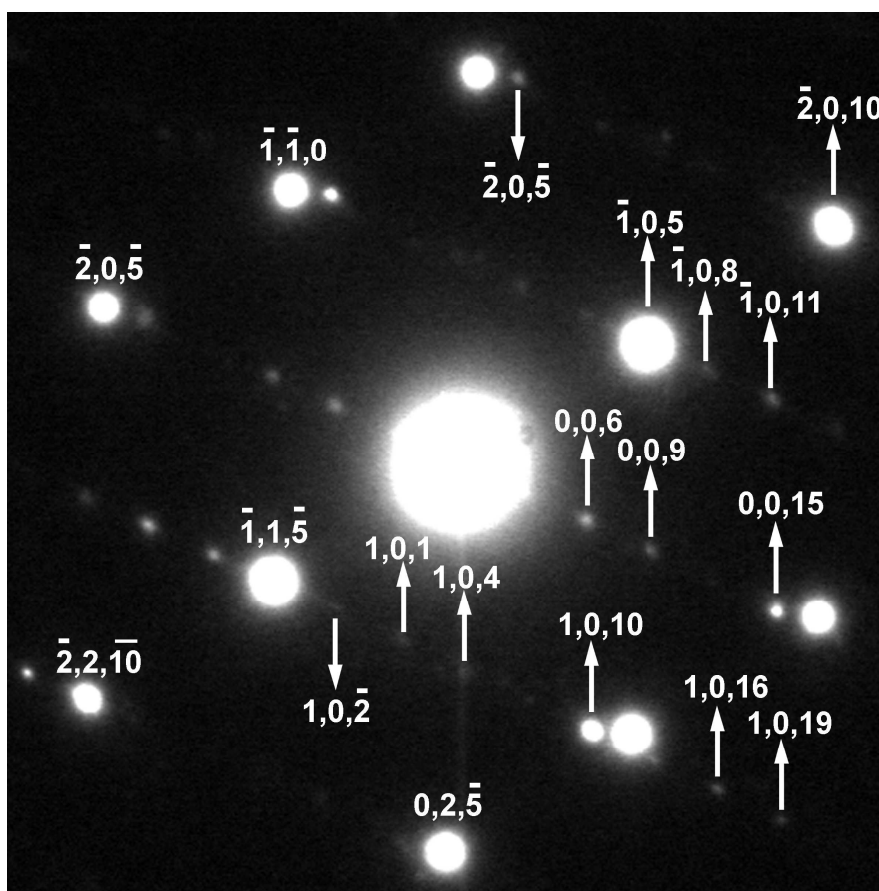
## Tri-Wing Bismuth Telluride Nanoribbons with Quasi-Periodic Rough Surfaces

Hang-Tian Zhu,<sup>a,b</sup> Jun Luo,<sup>\*b</sup> Hai-Ming Fan,<sup>c,d</sup> He Zhang,<sup>a,b</sup> Jing-Kui Liang,<sup>b,e</sup> Guang-Hui Rao,<sup>b</sup> Jing-Bo Li,<sup>b</sup> Guang-Yao Liu<sup>b</sup> and Zhen-Min Du<sup>a</sup>

\* Corresponding author. E-mail: jluo@aphy.iphy.ac.cn.



**Figure S1.** SEM image of Bi<sub>2</sub>Te<sub>3</sub> tri-wing NRs synthesized on a large scale.



**Figure S2.** Typical SAED pattern of an individual tri-wing  $\text{Bi}_2\text{Te}_3$  NR. The SAED pattern of the tri-wing  $\text{Bi}_2\text{Te}_3$  NR is the superposition of two sets of diffraction spots with the same composition and crystal structure but different epitaxial orientation relationship. One corresponds to the sharp diffraction spots, and the other to the weak diffraction spots marked by the arrows.