

Robust PEDOT Films by Covalent Bonding to Substrates Using in Tandem Sol-Gel, Surface Initiated Free-Radical and Redox Polymerization

Anand G. Sadekar, Dhairyashil Mohite, Sudhir Mulik, Naveen Chandrasekaran, Chariklia
Sotiriou-Leventis* and Nicholas Leventis*

Department of Chemistry, Missouri University of Science and Technology, Rolla, MO 65409,
USA; leventis@mst.edu, cslevent@mst.edu

Supporting Information

Figure S.1. Profilometry of: (A) a *Si-AIBN* film spin-coated on a glass surface; (B) a PMMA film formed by dipping a film as in (A) in a MMA solution (toluene); and, (C) a PMMA film formed by spin-coating a film as in (A) with a PMMA pre-polymer (see Experimental).

Figure S.2. GPC data for PS films scraped off glass slides (see Experimental). For data analysis see Table S.1.

Table S.1. Molecular weight data and radii of gyration for the PS films analyzed by GPC as shown in Fig. S.2

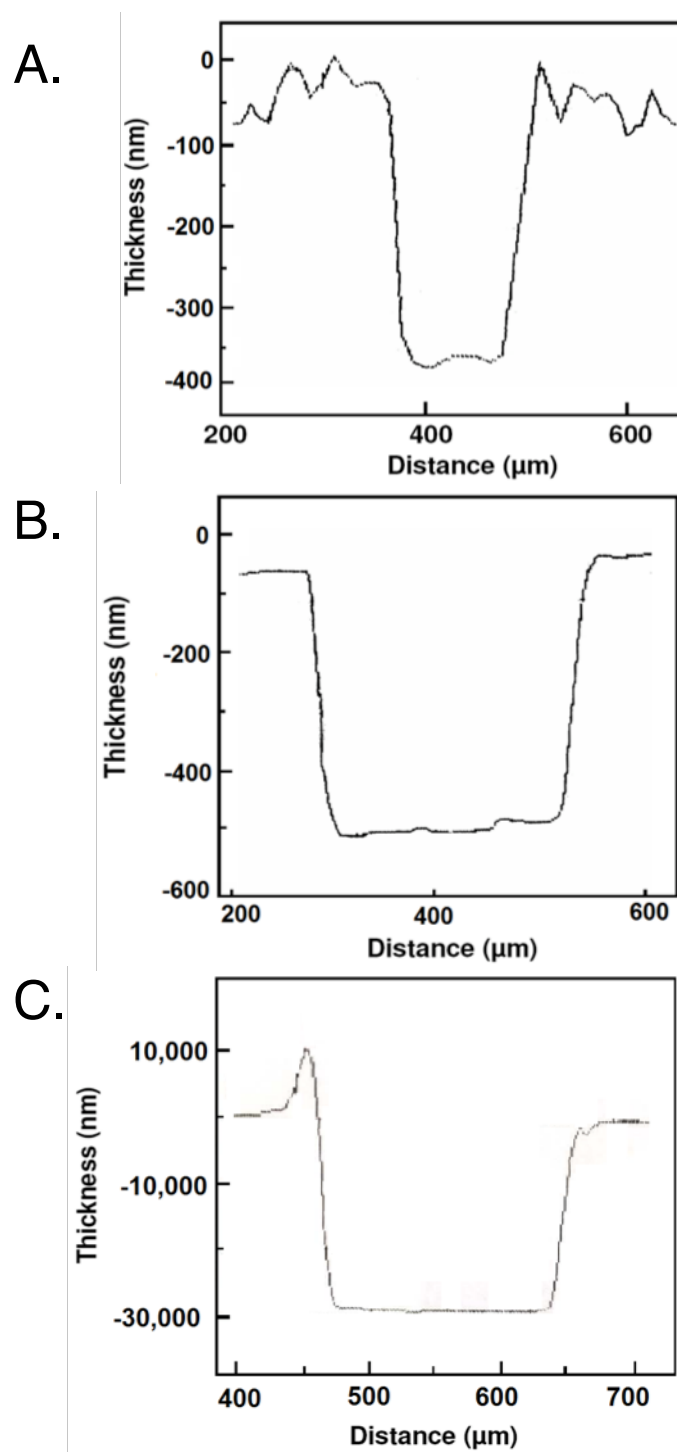


Figure S.1. Profilometry of: (A) a *Si-AIBN* film spin-coated on a glass surface; (B) a PMMA film formed by dipping a film as in (A) in a MMA solution (toluene); and, (C) a PMMA film formed by spin-coating a film as in (A) with a PMMA pre-polymer (see Experimental).

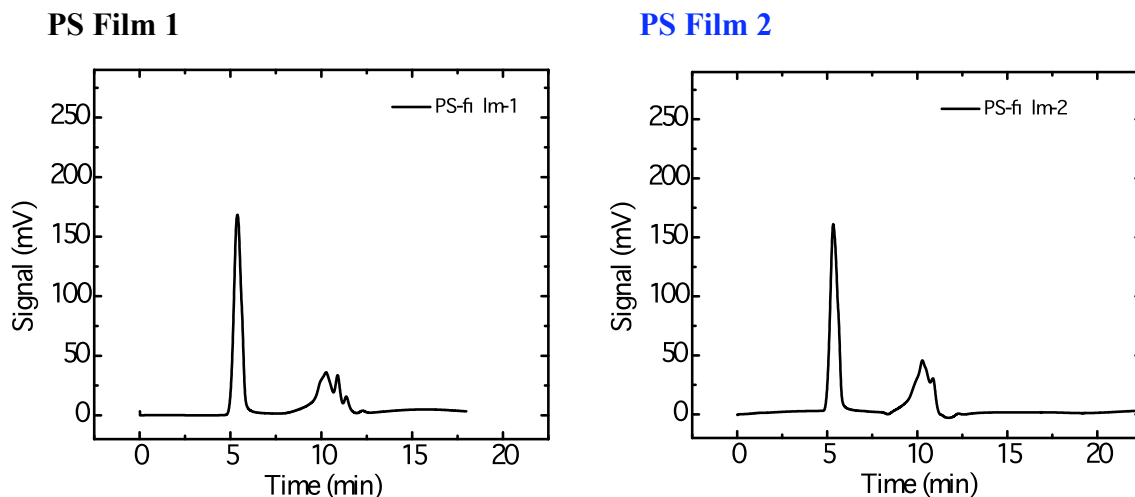


Figure S.2. GPC data for PS films scraped off glass slides (see Experimental). For data analysis see Table S.1.

Table S.1. Molecular weight data and radii of gyration for the PS films analyzed by GPC as shown in Fig. S.2^a

Ret. Time (min)	% area	M_n	M_w	M_w/M_n	N	R_g (nm)
5.37	65	109603	114962	1.05	1105	12.82
5.33	63	110584	116815	1.06	1123	12.95
10.25	27	314	398	1.27	4	0.43
10.27	34	290	373	1.28	4	0.41
10.89	5	150	152	1.01	2	0.24
10.86	3	153	155	1.01	2	0.24

^a Film 1 in black, Film 2 in blue