

Supplementary Information

Water-dispersible magnetite-graphene-LDH composites for efficient arsenate removal

Xi-Lin Wu^{1, 2}, Lei Wang³, Chang-Lun Chen², An-Wu Xu³, Xiang-Ke Wang^{1, 2}

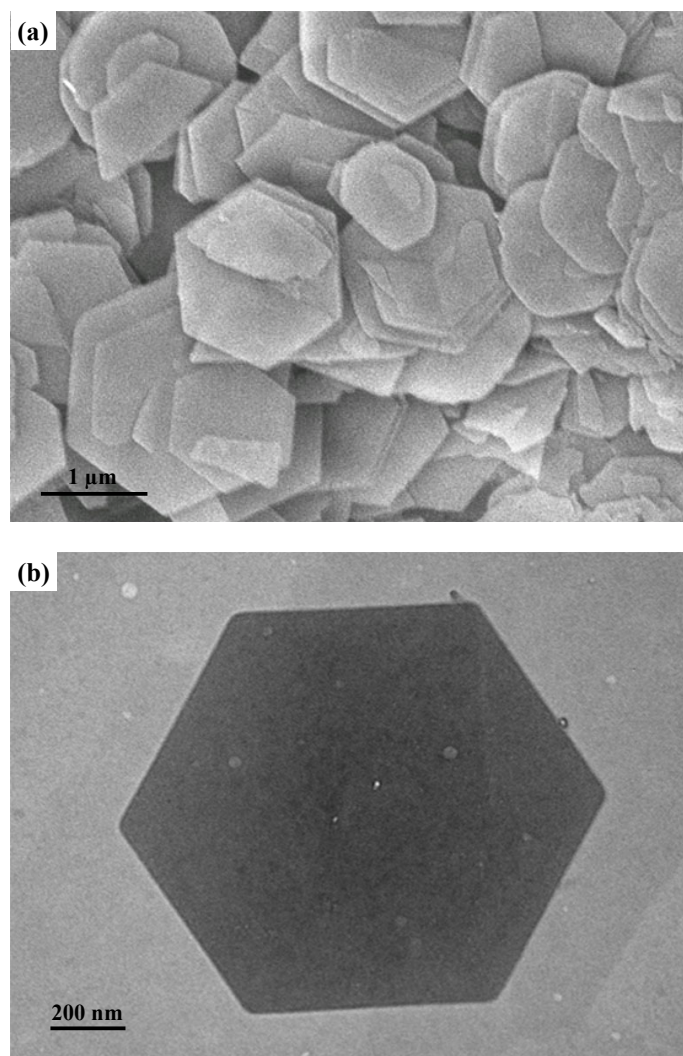


Fig. S1. SEM image of Mg/Al LDHs (a), and TEM image of Mg/Al LDHs (b).

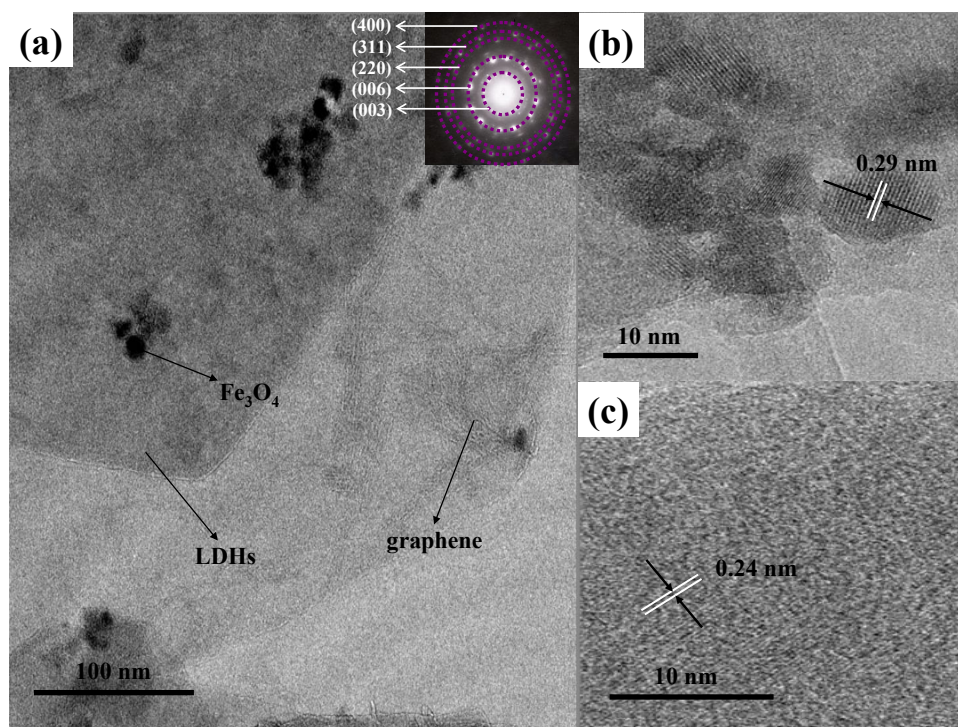
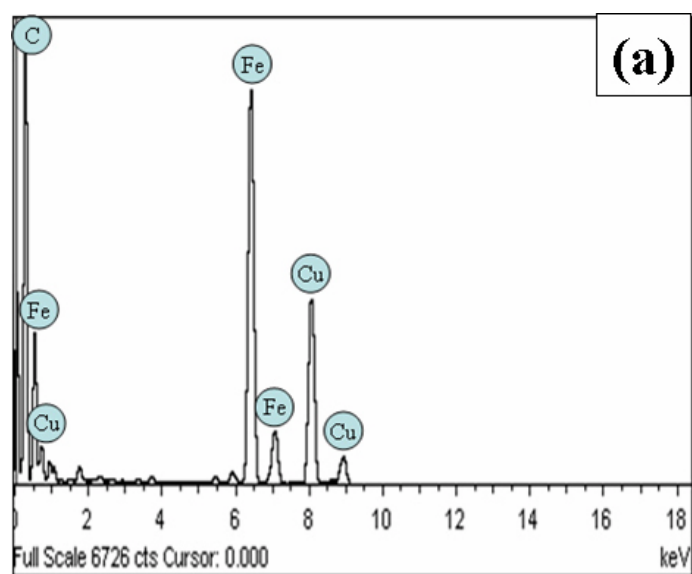


Fig. S2. TEM image of MGL (the inset in (a) is the SAED pattern of Fe₃O₄ and LDHs) (a), HR-TEM images of MGL, diffraction pattern of Fe₃O₄ (b) and LDHs (c).



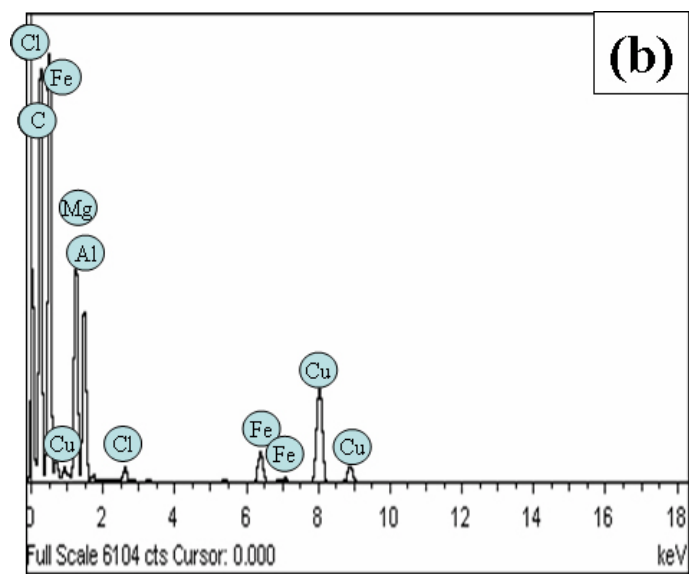
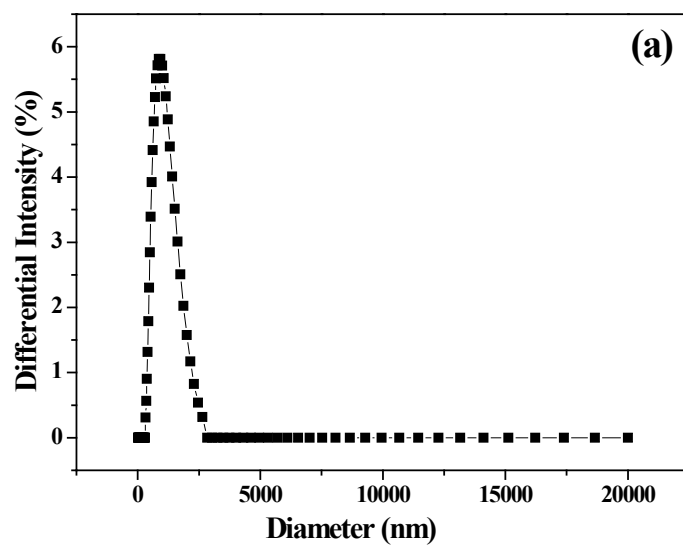


Fig. S3. EDS spectrum of MG (a), and MGL (b). Cu peak came from the TEM grid.



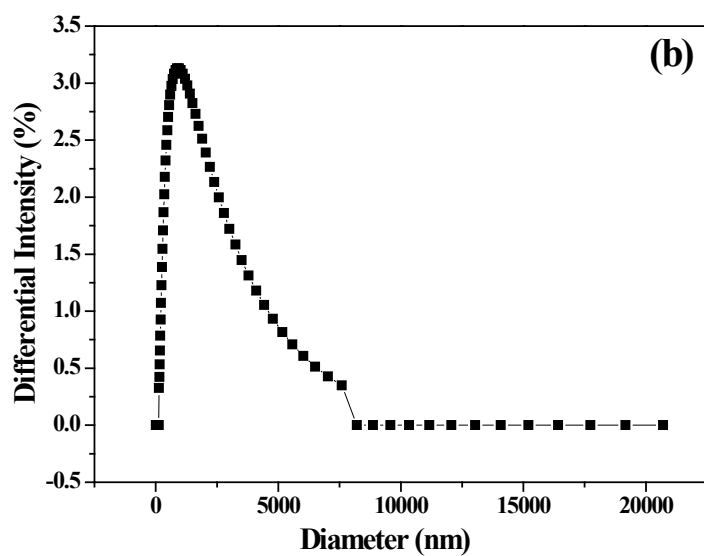


Fig. S4. Particle size distribution of the Mg/Al LDHs (a), and MGL composites (b).

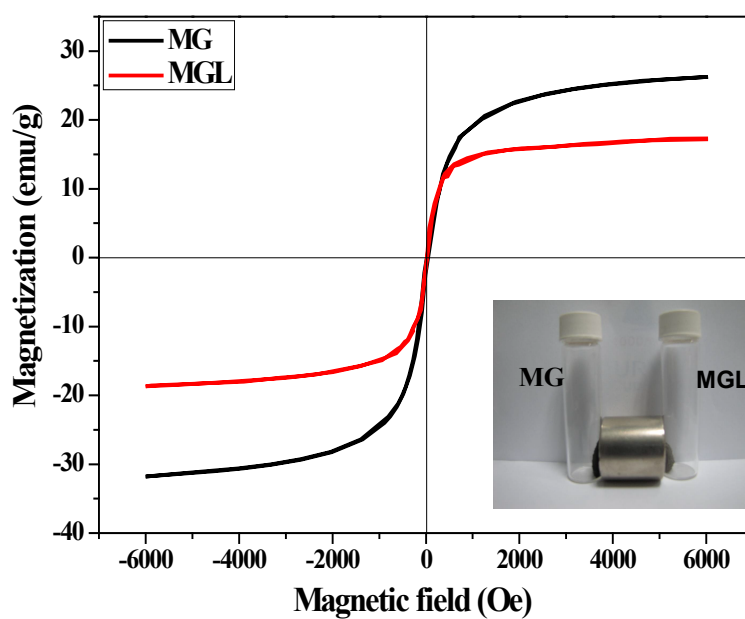


Fig. S5. Hysteresis curves of MG and MGL.