

Supporting Information: Ainara Garcia-Gallastegui, Diana Iruretagoyena, Mohamed Mokhtar, Abdullah M. Asiri, Sulaiman N. Basahel, Shaeel A. Al-Thabaiti, Abdulrahman O. Alyoubi, David Chadwick, Milo S. P. Shaffer, *J. Mater. Chem.* Manuscript.

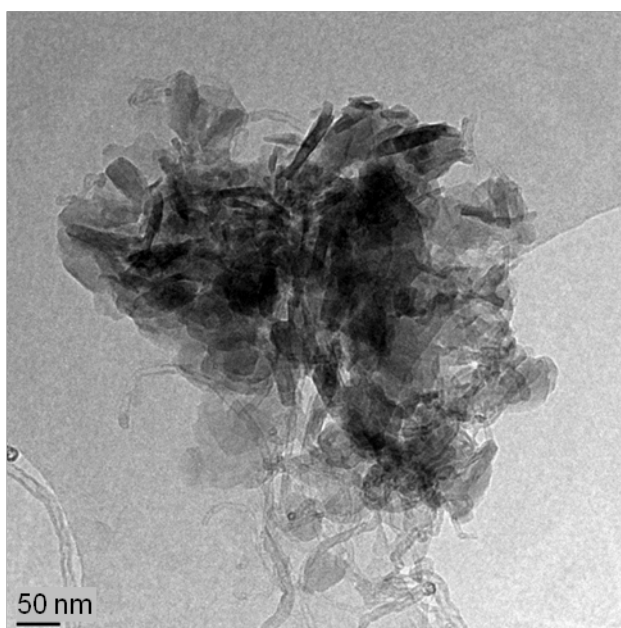


Fig SI 1 Representative TEM image corresponding to the LDH/MWNT sample containing 62wt% LDH.

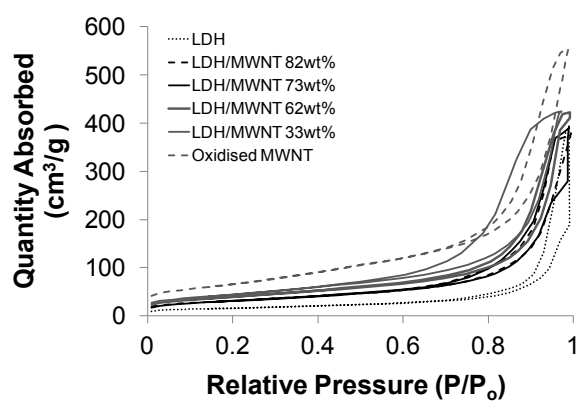


Fig SI 2 Adsorption-desorption nitrogen isotherms of LDH, oxidised MWNT and LDH/MWNT samples showing type IV isotherms according to the IUPAC classification.