

Supporting Information

***L*-3,4-dihydroxyphenylalanine-Collagen Modified PDMS Surface for Controlled Cell Culture**

Chun-Ying Gao^{†,‡}, Yuan-Yuan Guo^{‡,‡}, Jia He^{§,‡}, Ming Wu[†], Yang Liu[†], Zhong-Liang Chen[†], Wen-Sheng Cai[§], Yan-Lian Yang^{‡,*}, Chen Wang[‡], Xi-Zeng Feng^{†,*}

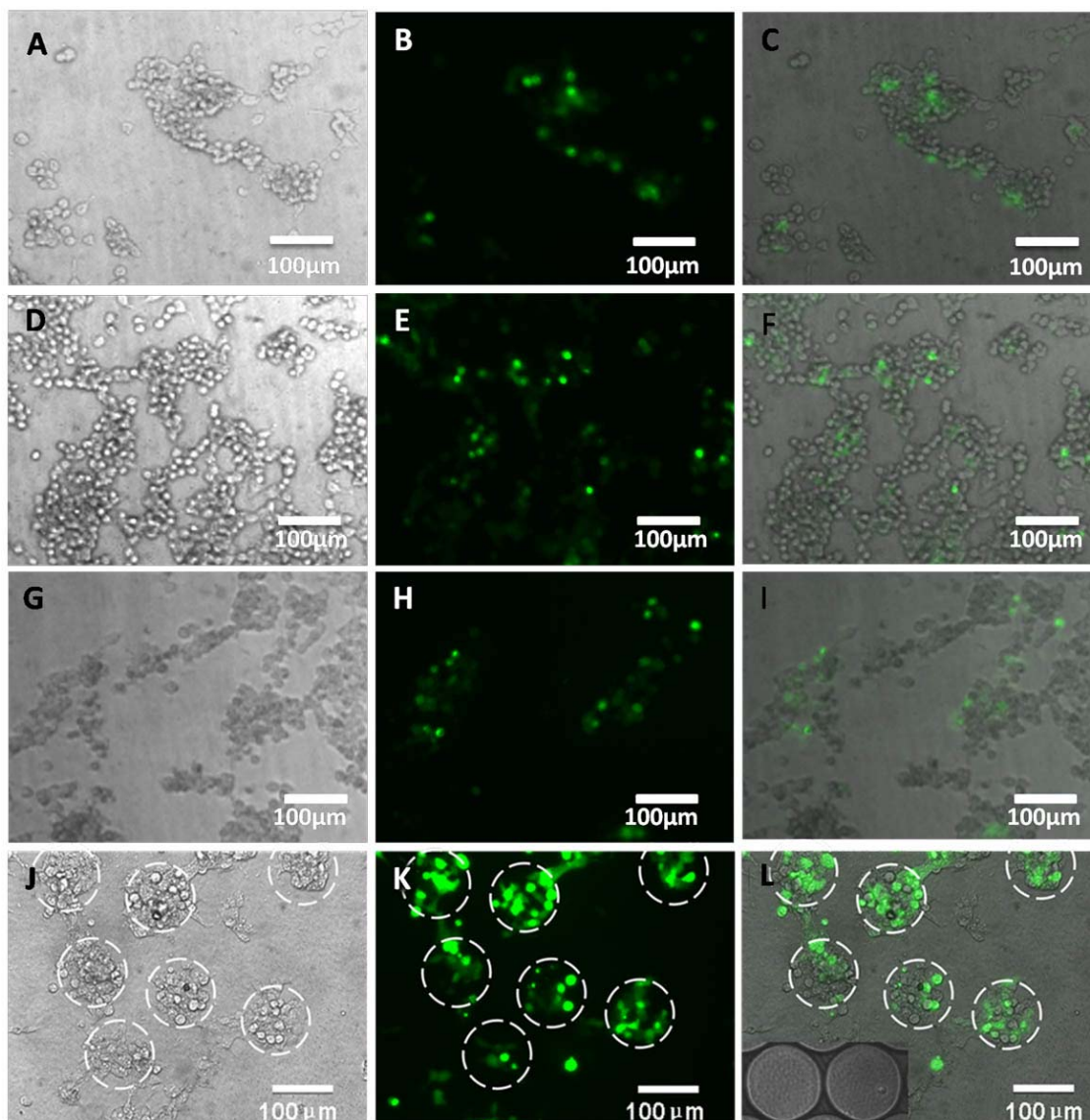


Figure S1 Fluorescence images of the 293T cells growing on the PDMS, *L*-Dopa patterned PDMS and *L*-Dopa-collagen patterned PDMS surface showing good cell growth and activity behaviors. (Optical images of cells on PDMS surface (A), *L*-Dopa patterned surface (D) and *L*-Dopa-collagen patterned surface (G); fluorescence image of cells on PDMS surface (B), *L*-Dopa patterned surface (E) and *L*-Dopa-collagen patterned surface (H); merged optical and fluorescence image of cells on PDMS surface (C), *L*-Dopa patterned surface (F) and *L*-Dopa-collagen patterned surface (I).