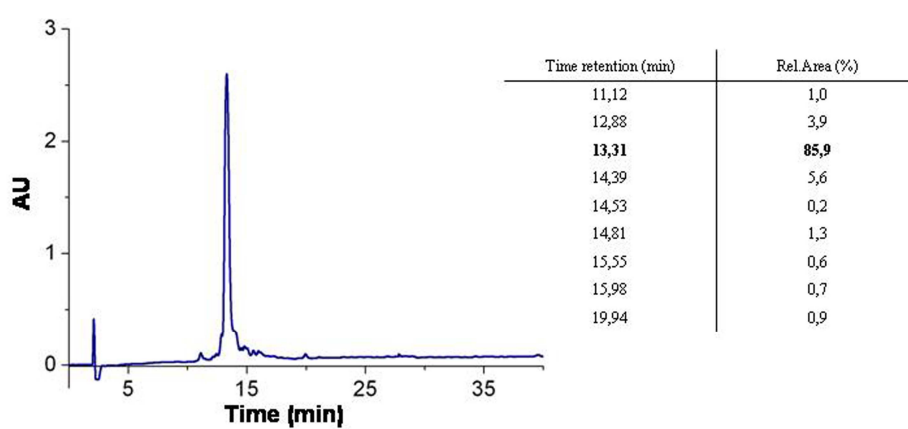


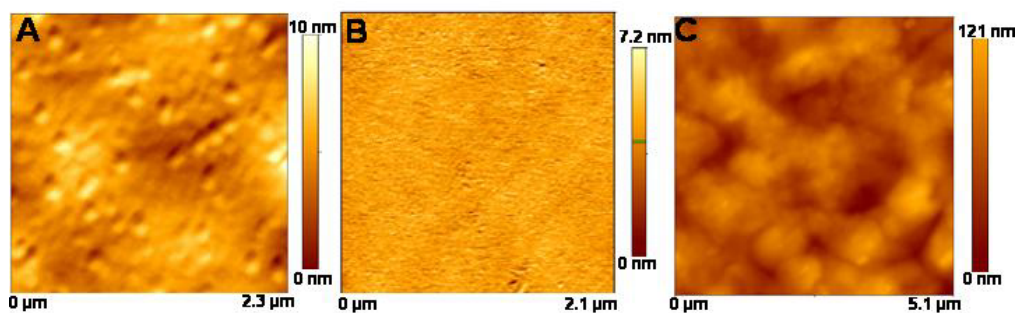
## Mussel Adhesive Protein Inspired Coating: A Versatile Method to Fabricate Silica Films on Various Surfaces

A Rai and C C Perry

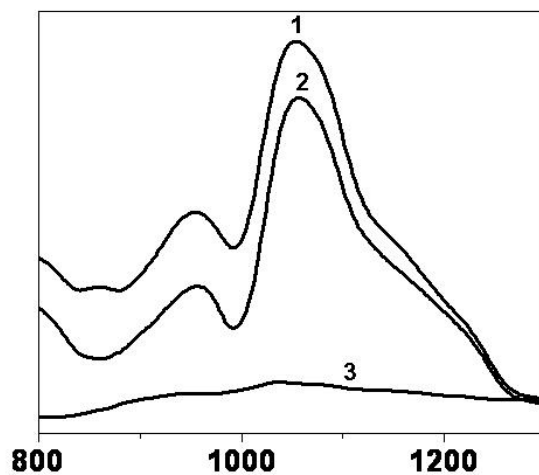
### Supporting Information



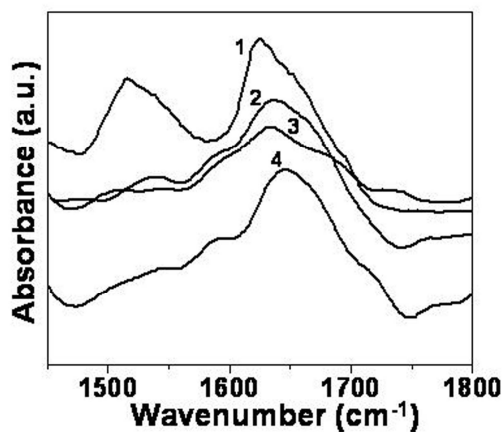
**Figure SI 1:** Analytical RP-HPLC data of decapeptide analog synthesised by solid phase Fmoc peptide synthesis.



**Figure SI 2:** AFM images of silicatein adsorbed on a bare gold surface (A) and silica film fabricated on a bare gold surface (B) and silicatein adsorbed gold surface (C).



**Figure SI 3:** FTIR spectra of Silica films on silicatein-poly(DOPA) (stored at room temperature for 30 days) (curve 1), silicatein-decapeptide (stored at 4 °C for 5 days) (curve 2) and silicatein-decapeptide surfaces (stored at room temperature for 5 days) (curve 3).



**Figure SI 4:** FTIR spectra of native silicatein (curve 1) and silicatein adsorbed on poly(DOPA)-Au (curve 2), decapeptide-Au (curve 3) and plain gold (curve 4) surfaces.