

Supplementary Material (ESI) for Journal of Materials Chemistry
This journal is © The Royal Society of Chemistry 2012

Supplementary Information

Large-Area, Highly Oriented Lamellar Block Copolymer Nanopatterning Directed by Graphoepitaxially Assembled Cylinder Nanopatterns

Hyoung-Seok Moon,^a Dong Ok Shin,^a Bong Hoon Kim,^a Hyeong Min Jin,^a Sumi Lee,^b
Moon Gyu Lee,^b and Sang Ouk Kim^{a*}

^aDepartment of Materials Science and Engineering, KAIST,
Daejeon, 305-701, Republic of Korea

^b LCD R&D Center, Samsung Electronics,
446-920 446-711 95 Samsung2-Ro, Kihung-Gu, Yung-In city,
Kyungki-Do, 446-920, Republic of Korea

e-mail: sangouk.kim@kaist.ac.kr

Supplementary Material (ESI) for Journal of Materials Chemistry
This journal is © The Royal Society of Chemistry 2012

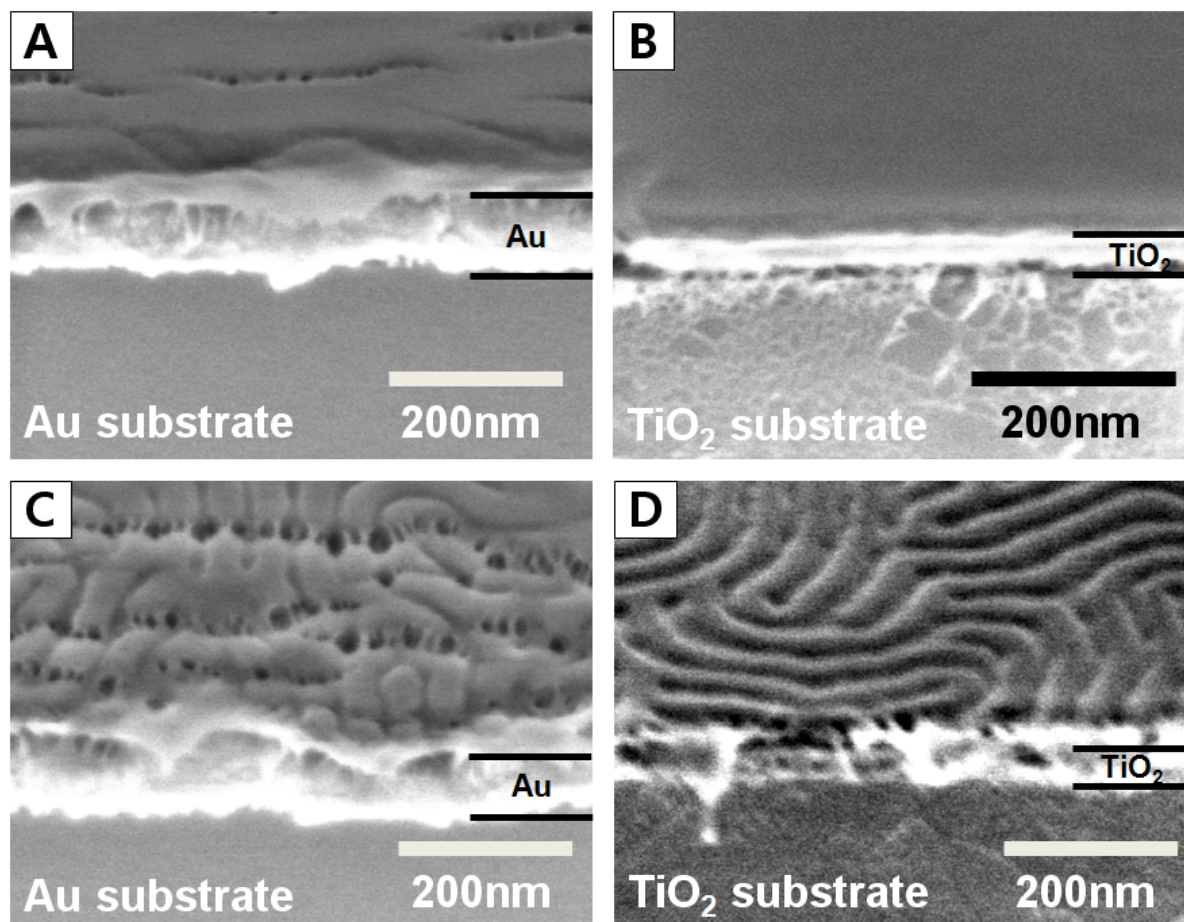


Figure S1. Crosssectional SEM image of parallel self-assembled lamellae on bare (a) Au film and (b) TiO₂ film, and perpendicular self-assembled lamellae on the parallel cylinder block copolymer layer deposited on (c) Au film and (d) TiO₂ film, respectively.