

Supplementary Information

for

**A Fast and Stable TiO₂-Supported SnO₂-Nanocomposite Lithium
Ion Battery Anode**

**Yong-Mao Lin,^{‡ab} Rajaram K. Nagarale,^{‡b} Kyle C. Klavetter,^{ab} Adam Heller^{*b} and
C. Buddie Mullins^{*a}**

*^aDepartments of Chemical Engineering and Chemistry and Biochemistry, Center for Electrochemistry,
Texas Materials Institute, and Center for Nano- and Molecular Science, University of Texas at Austin
1 University Station, C0400 Austin, TX 78712-0231, United States
Email: mullins@che.utexas.edu*

*^bDepartment of Chemical Engineering, University of Texas, Austin, Texas 78712-0231, United States
Email: heller@che.utexas.edu*

[‡]These authors contributed equally to this work.

^{*}mullins@che.utexas.edu

Supplementary Figures

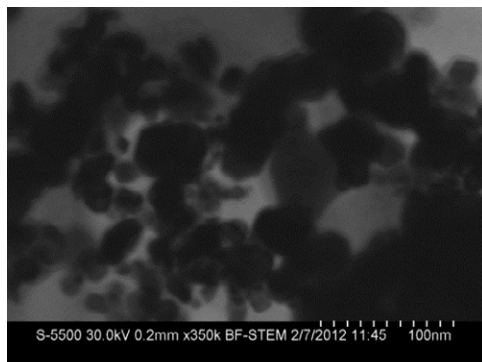


Figure S1. STEM image of the SnO₂ nanoparticles (Aldrich).

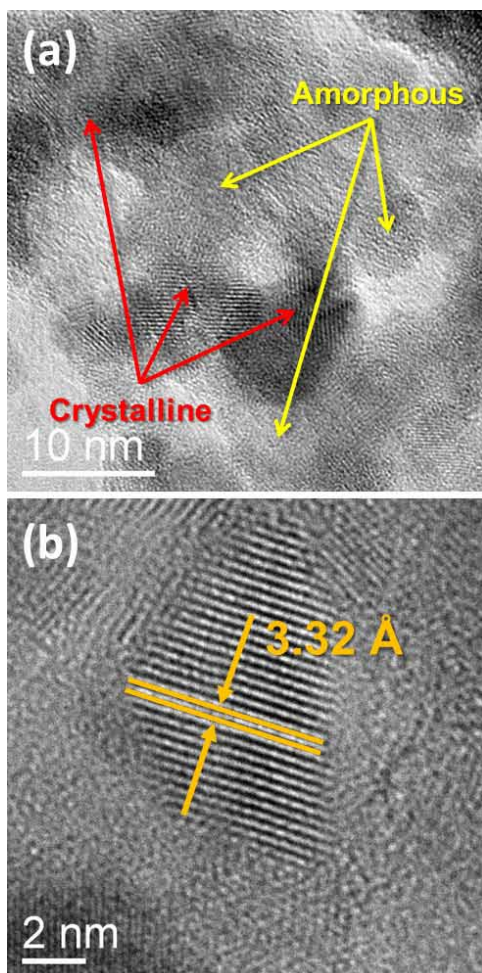


Figure S2. TEM images of the SnO₂/TiO₂ nanocomposite (a) at a low magnification and (b) at a high magnification. The orange arrows and solid lines in (b) indicate two consecutive fringes.