

Supporting Information for

Synthesis of graphene-supported $\text{Li}_4\text{Ti}_5\text{O}_{12}$ nanosheets for high rate battery application

Yufeng Tang,^a Fuqiang Huang,^{*,a,b} Wei Zhao,^a Zhanqiang Liu,^a Dongyun Wan^a

^a CAS Key Laboratory of Materials for Energy Conversion and State Key Laboratory of High Performance Ceramics and Superfine Microstructure, Shanghai Institute of Ceramics, Chinese Academy of Sciences, Shanghai 200050, China; ^b State Key Laboratory of Rare Earth Materials Chemistry and Applications, College of Chemistry & Molecular Engineering, Peking University, Beijing 100871, China

*Corresponding author: Fax: +86 21 52416360, Tel: +86 21 52411620

E-mail addresses: huangfq@mail.sic.ac.cn

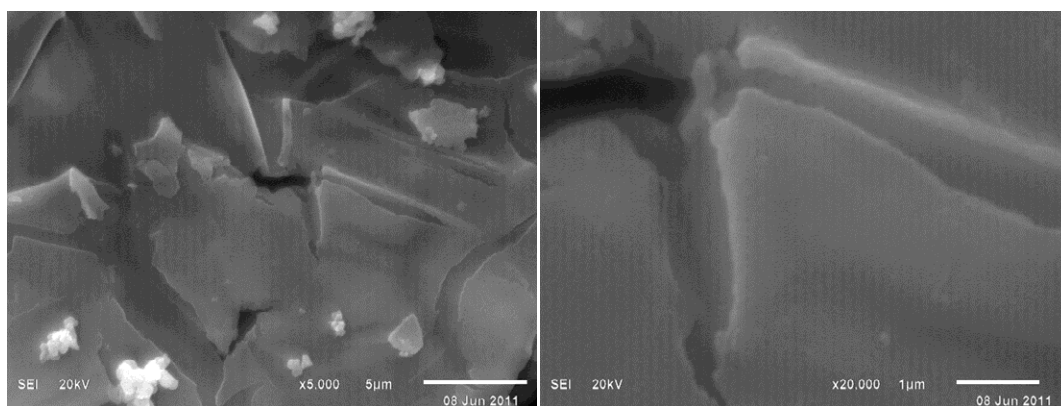


Figure S1. SEM images of TiO₂ colloids-contained GO sheets

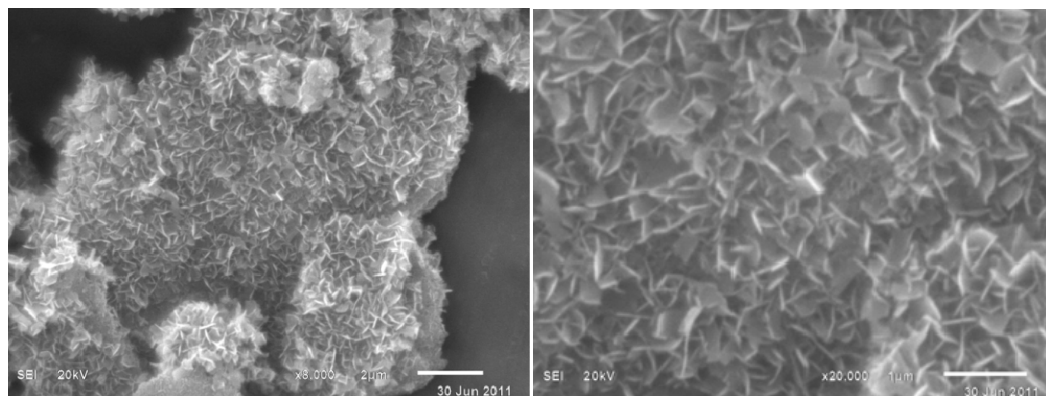


Figure S2. SEM images of GO-supported LHTO nanosheets

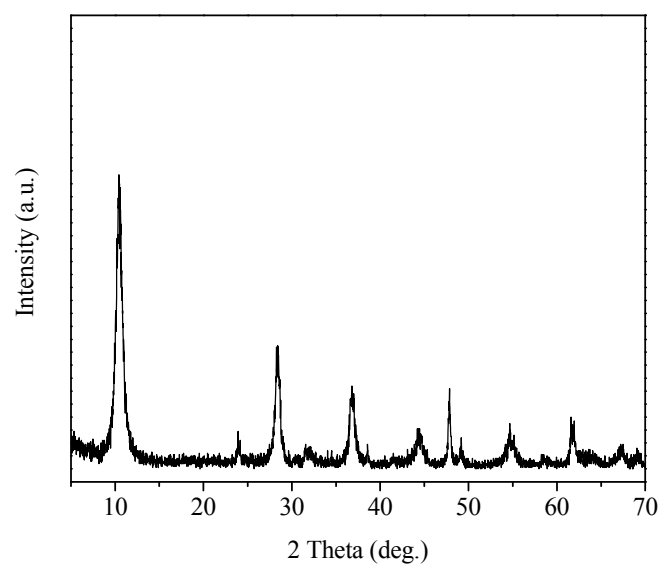


Figure S3. XRD pattern of GO-supported LHTO nanosheets

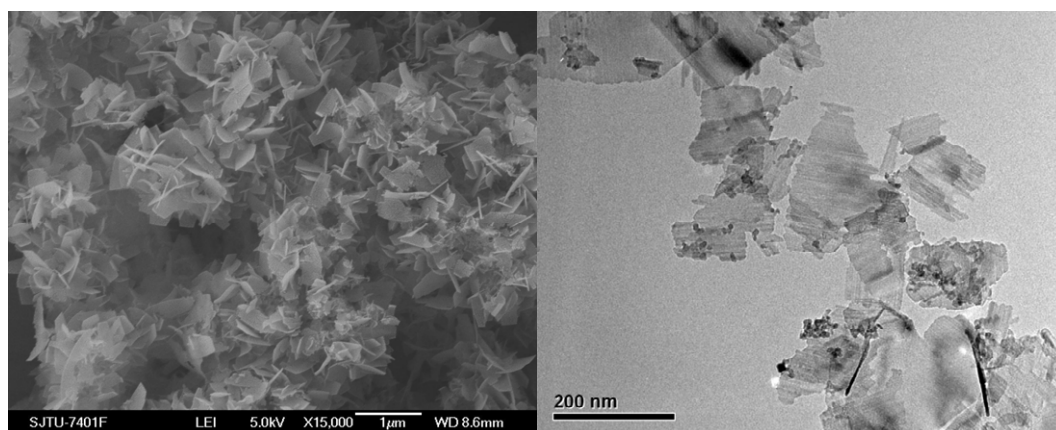


Figure S4. SEM and TEM images of LTO nanosheets

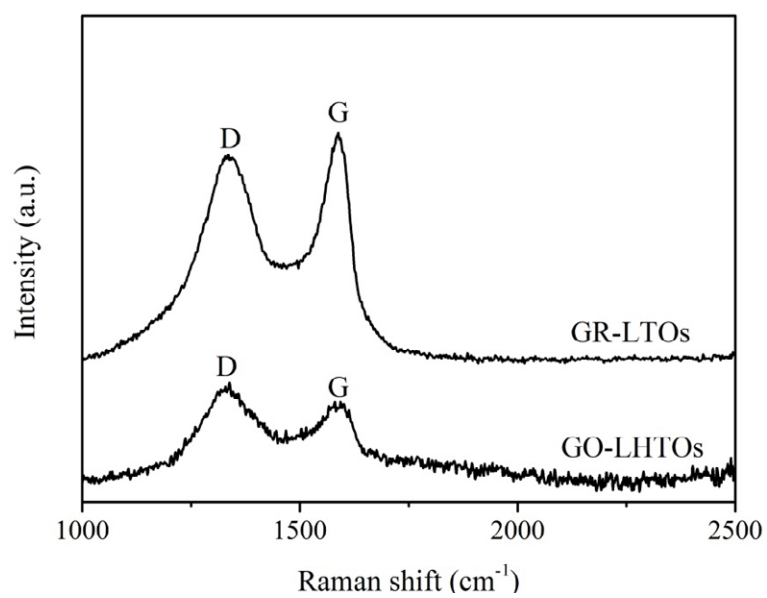


Figure S5. Raman spectra of GR-LTOs and GO-LHTO nanosheets