

Supplementary Information for

Biodegradable Poly(ϵ -caprolactone)-*g*-Poly(2-hydroxyethyl methacrylate) Graft Copolymer Micelles as Superior Nano-Carriers for “Smart” Doxorubicin Release

Ru Cheng,^a Xiaoyan Wang,^a Wei Chen,^a Fenghua Meng,^a Chao Deng,^a Haiyan Liu,^b
and Zhiyuan Zhong^{*,a}

Biomedical Polymers Laboratory, and Jiangsu Key Laboratory of Advanced Functional Polymer Design and Application, College of Chemistry, Chemical Engineering and Materials Science, Soochow University, Suzhou, 215123, P. R. China.

^bLaboratory of Cellular and Molecular Tumor Immunology, Institute of Biology and Medical Sciences, Soochow University, Suzhou 215123, P. R. China.

* Corresponding author. Tel/Fax: +86-512-65880098, Email: zyzhong@suda.edu.cn

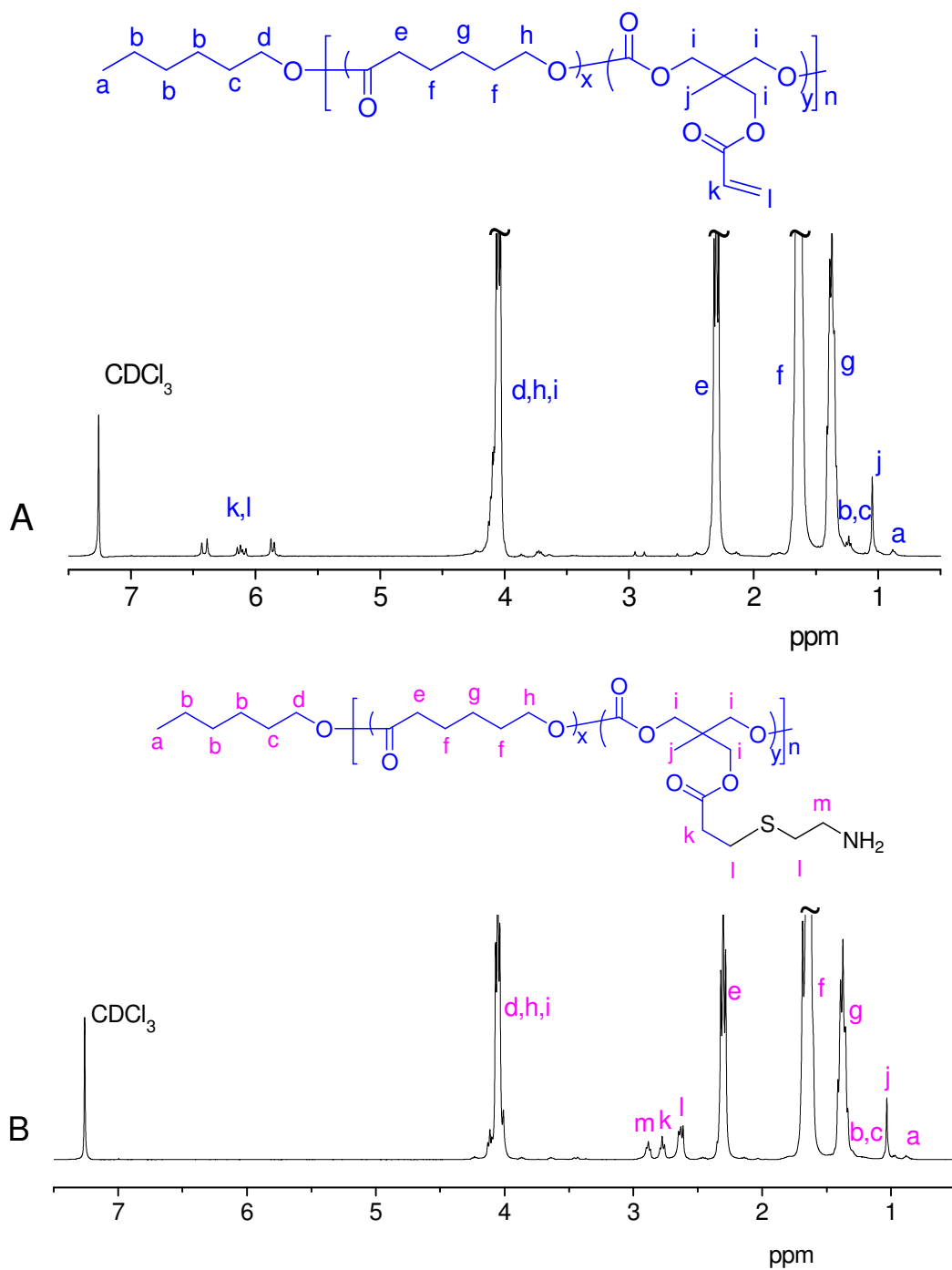


Figure S1. ¹H NMR spectra (400 MHz, CDCl₃) of PCL(Acr) (A) and PCL(Cys) (B).

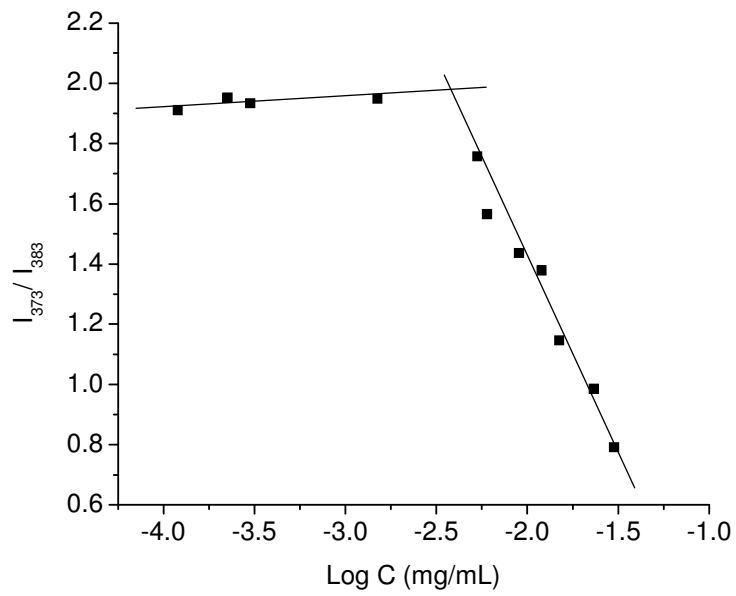


Figure S2. Intensity ratio I_{373}/I_{383} of pyrene at varying PCL-g-PHEMA(16.3k) concentrations in water (pyrene final concentration is 0.6 μM).