

Supporting information

Banana-Shaped Molecular Architecture: Formation of Large Columns Composed of Two Concentrically Enclosed Layers

Sungmin Kang,^{*a} Ryohei Ishige,^b Eun-Woo Lee,^a Masatoshi Tokita^a and Junji Watanabe^a

^a Department of Organic and Polymeric Materials, Tokyo Institute of Technology, 2-12-1 Ookayama, Meguro-ku, Tokyo 152-8552, Japan

^b Institute for Materials Chemistry and Engineering, Kyushu University, 744 Motooka, Nishi-ku, Fukuoka 819-0395, Japan

Figure Caption

Figure S1. Phase behavior of 4Br-P-*n*-O-PIMB compounds. The transition temperatures and phase structures are shown as a function of the carbon number (*n*) in the alkoxy tail.

Figure S2. (a–h) Fourier reconstitution of the electron density maps for the X3 phase using the four reflections *210*, *220*, *310*, and *400* with different phase combinations.

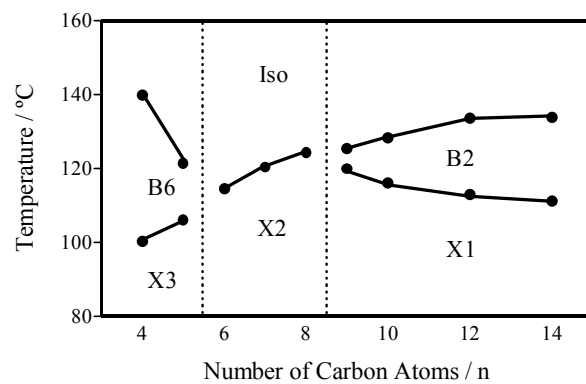


Figure S1

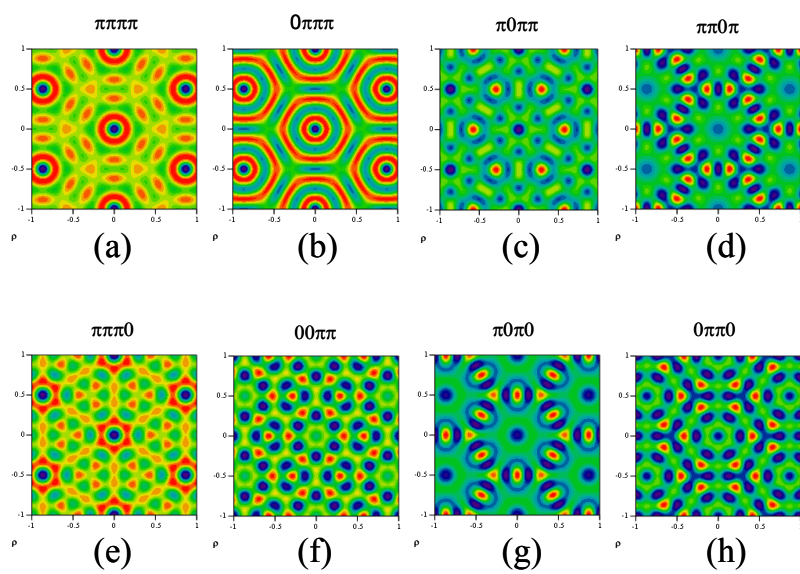


Figure S2