

(Electronic Supplementary Information)

Bioreducible Polymersomes for Intracellular Dual-Drug Delivery

Thavasyappan Thambi^a, V.G. Deepagan^a, Hyewon Ko^a, Doo Sung Lee^a, and Jae Hyung Park^{a,b*}

^aDepartment of Polymer Science and Engineering, College of Engineering,
Sungkyunkwan University, Suwon 440-746, Republic of Korea

^bGraduate School of Health Sciences and Technology, Sungkyunkwan University,
Suwon 440-746, Republic of Korea

*Corresponding author:

Jae Hyung Park, Ph.D.

Department of Polymer Science and Engineering

College of Engineering

Sungkyunkwan University, Suwon 440-746, Republic of Korea

Tel: +82-31-290-7288; fax: +82-31-290-7309; e-mail: jhpark1@skku.edu

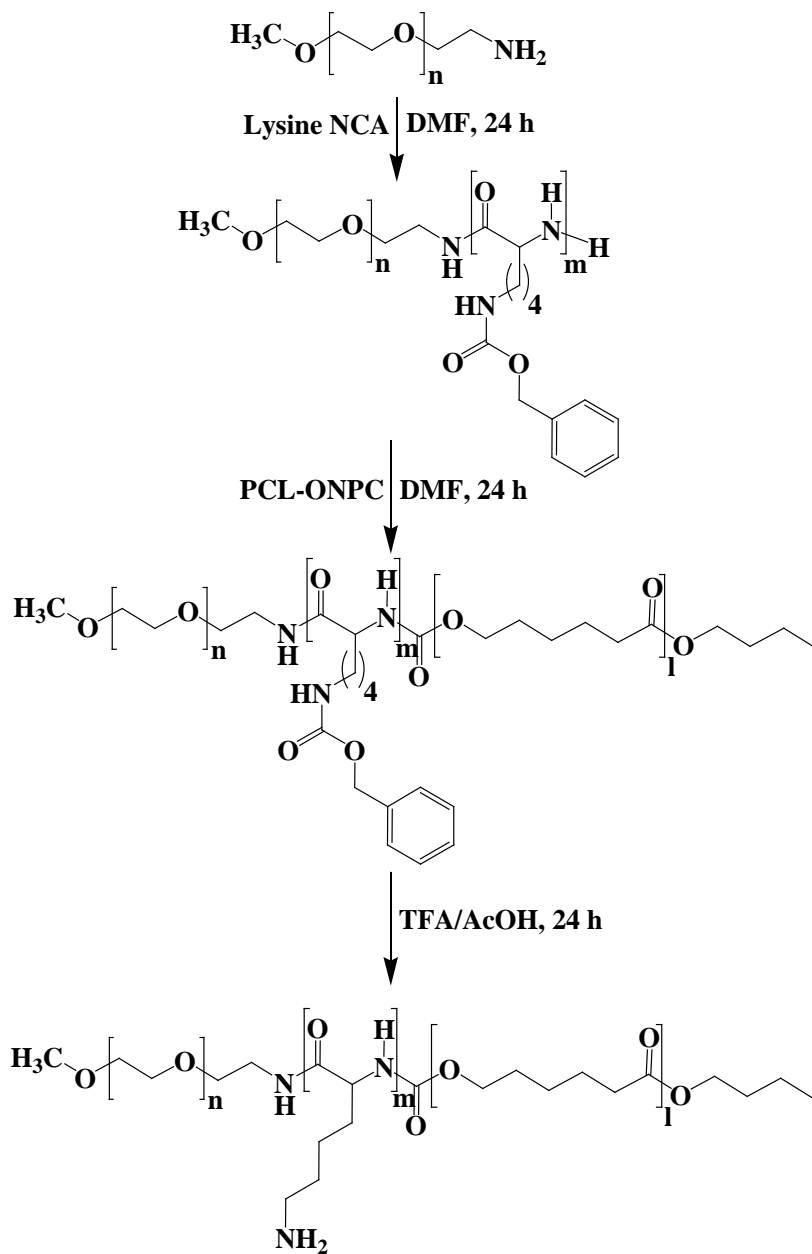


Fig. S1. Synthetic route for PEG-*b*-PLys-*b*-PCL block copolymer.

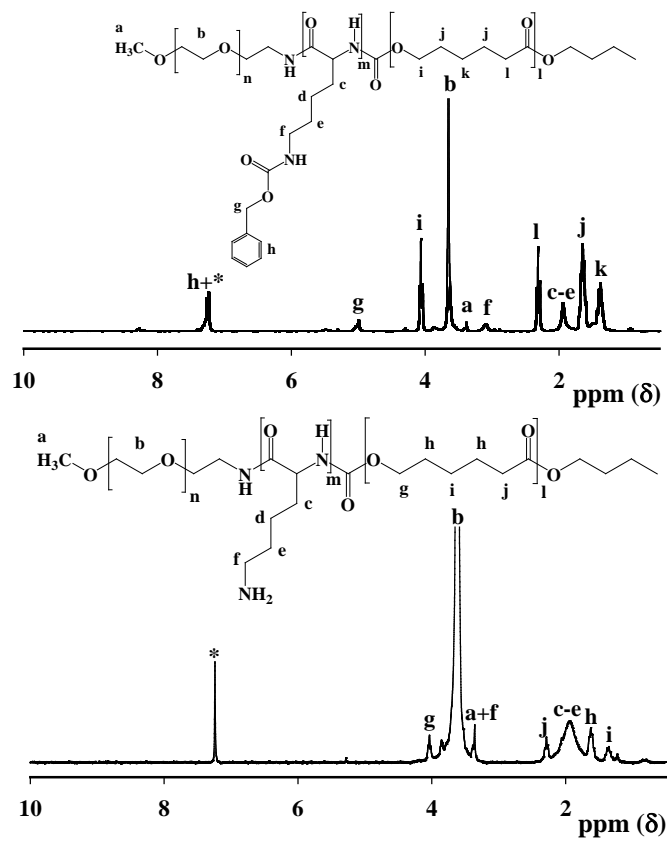


Fig. S2. ¹H NMR spectra of PEG-*b*-PLys-*b*-PCL and its intermediates. *Indicates the peak from the solvent.

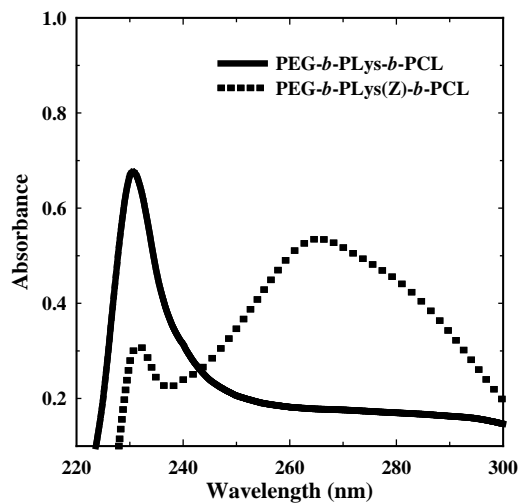


Fig. S3. UV-vis spectra of PEG-*b*-PLys(Z)-*b*-PCL and PEG-*b*-PLys-*b*-PCL triblock copolymers.

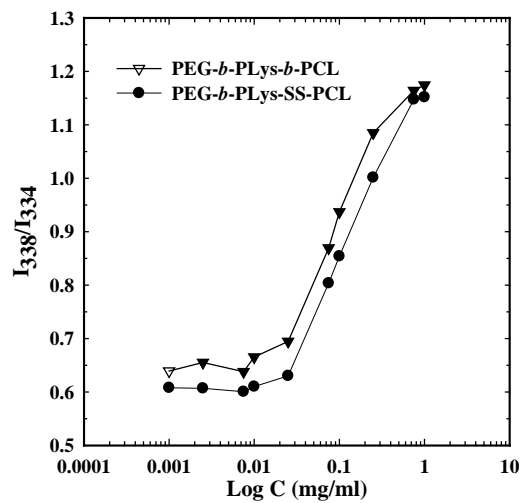


Fig. S4. Plot of pyrene intensity versus polymersome concentrations.

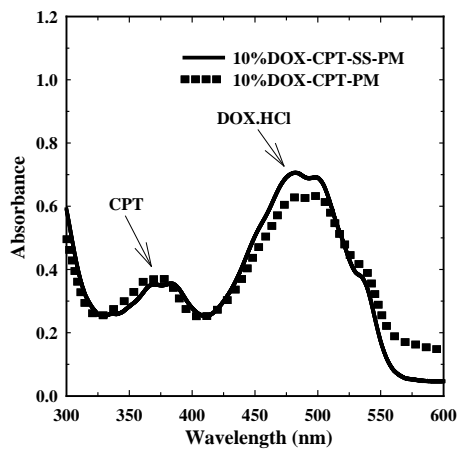


Fig. S5. UV-vis spectra of dual-drug-loaded polymersomes.

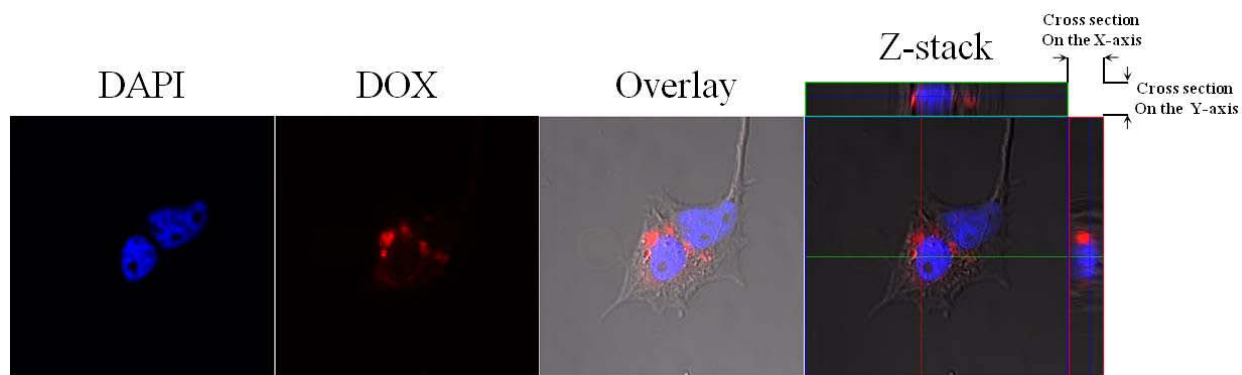


Fig. S6. Confocal laser scanning microscopic image of the SCC7 cell incubated with DOX-SS-PM.