

Supplementary Data

Plouffe et al, Lab on a Chip Manuscript No. B715707J

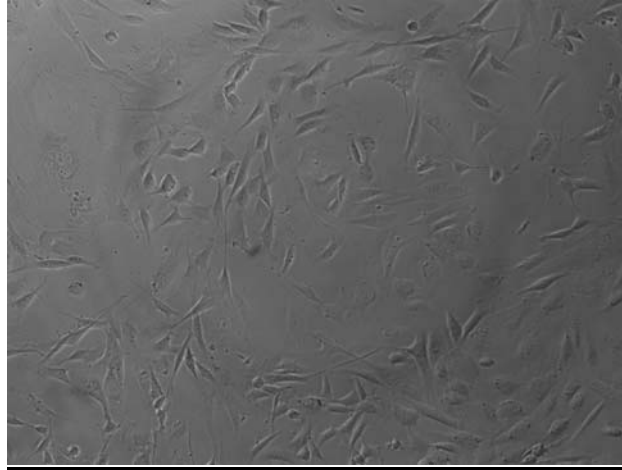


Figure S1. Representative brightfield micrograph of cells spreading normally after 24 hours in culture following output from a 3-stage separation.

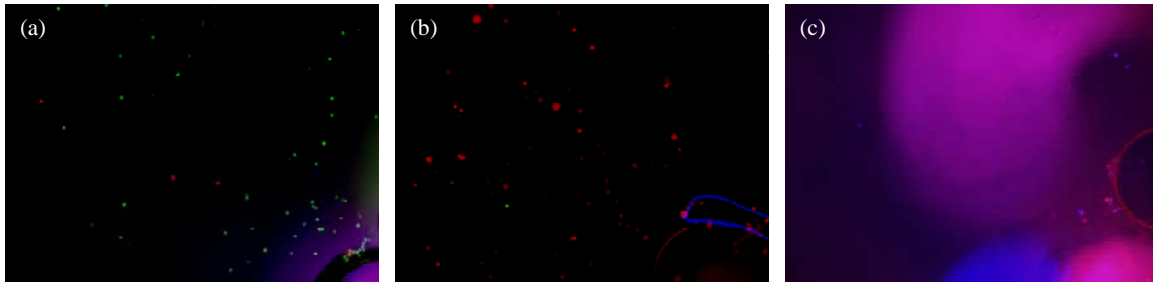


Figure S2. Fluorescence micrographs of entry ports of devices coated with (a) REDV, (b) VAPG, and (c) RGDS in a 3-stage arrangement. In all images the entry port is at the lower right hand corner of the images. The area covered by each image is 1.3 mm \times 1.7 mm and the magnification is 10 \times .

Table S1. Stage-wise Output Cell Counts for 37 °C Experiment.

	Output Cell counts ($\times 10^4$ cells)			
	Input	REDV (Stage 1)	VAPG (Stage 2)	RGDS (Stage 3)
Endothelial Cells	16.7	4.92	3.5	0.63
Smooth Muscle Cells	16.7	13.5	5.34	1.06
Fibroblasts	16.7	14.8	10.7	0.93