

Supporting Information:

Microfluidic Patterning of Nanodisc Lipid Bilayers and Multiplexed Analysis of Protein Interaction

Edgar D. Goluch^{1#}, Andrew W. Shaw^{2#}, Stephen G. Sligar^{2,3,4}, Chang Liu^{1,5, 6*}*

¹Department of Bioengineering, ²Department of Chemistry, ³Department of Biochemistry, and
⁴College of Medicine

University of Illinois, Urbana, Illinois 61801.

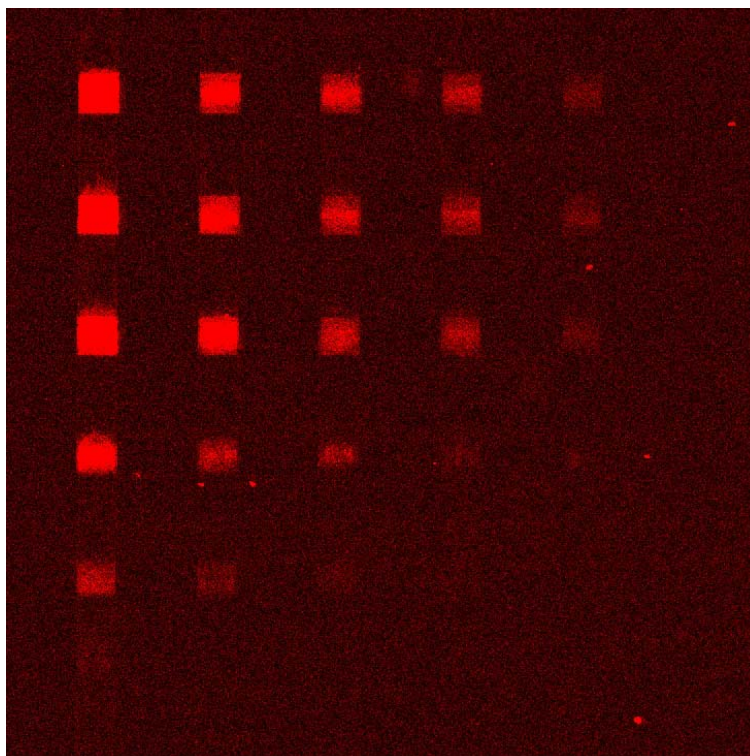
⁵Department of Mechanical Engineering

⁶Department of Electrical Engineering and Computer Science

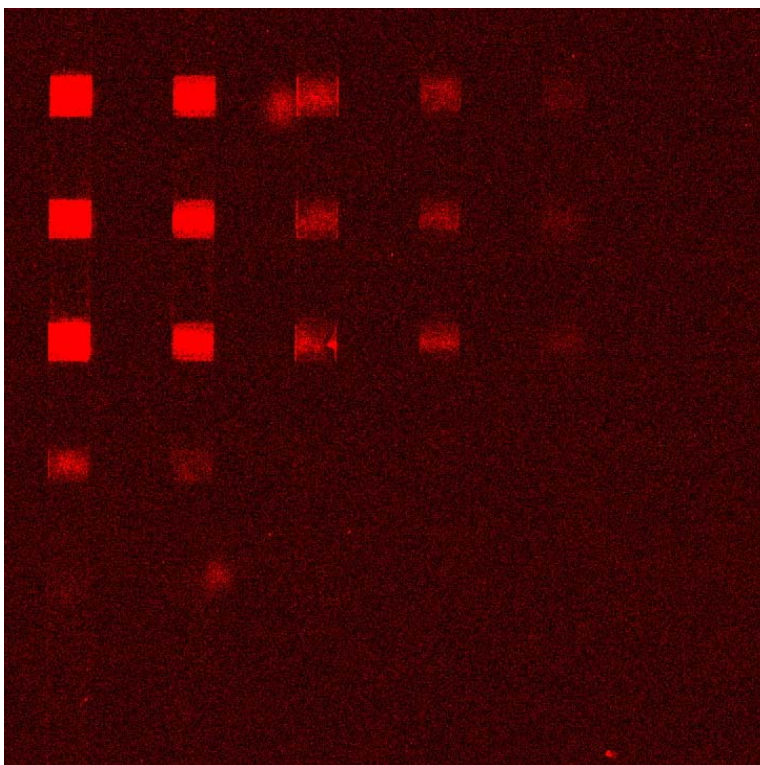
Northwestern University, Evanston, Illinois 60208

*Corresponding authors. Emails: s-sligar@uiuc.edu; changliu@northwestern.edu

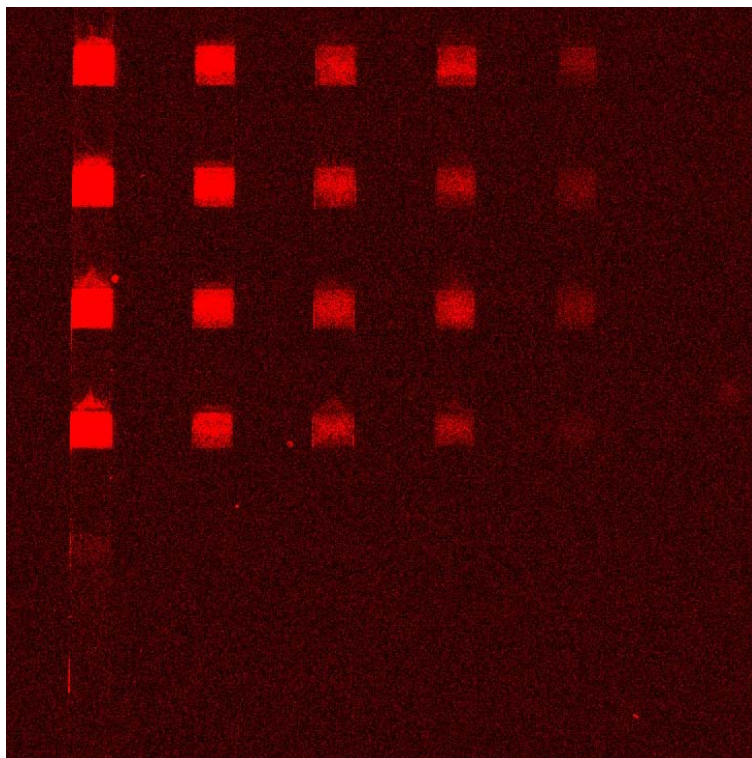
[#]These authors contributed equally to this work.



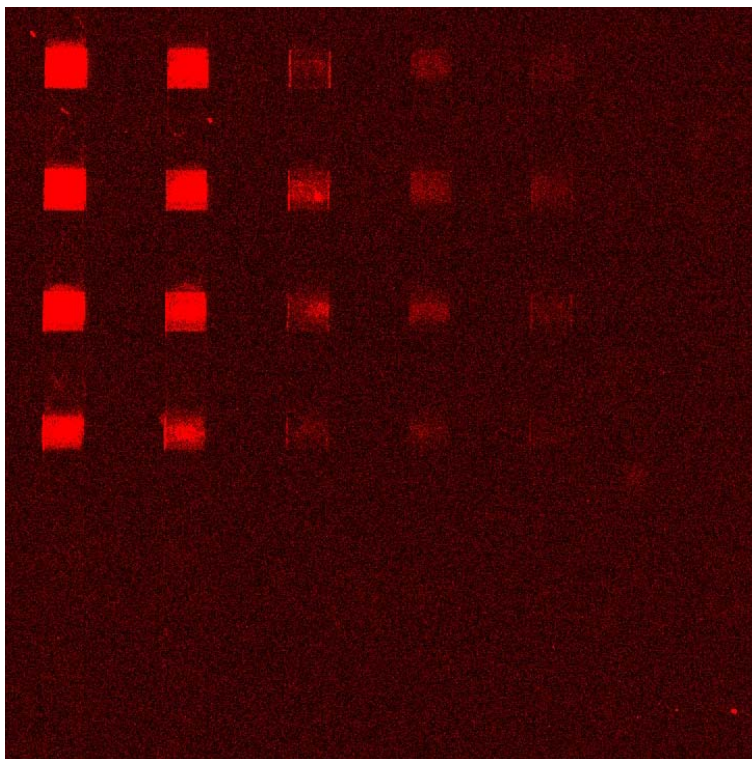
S1. Raw data used for generating the graph in Figure 4B.



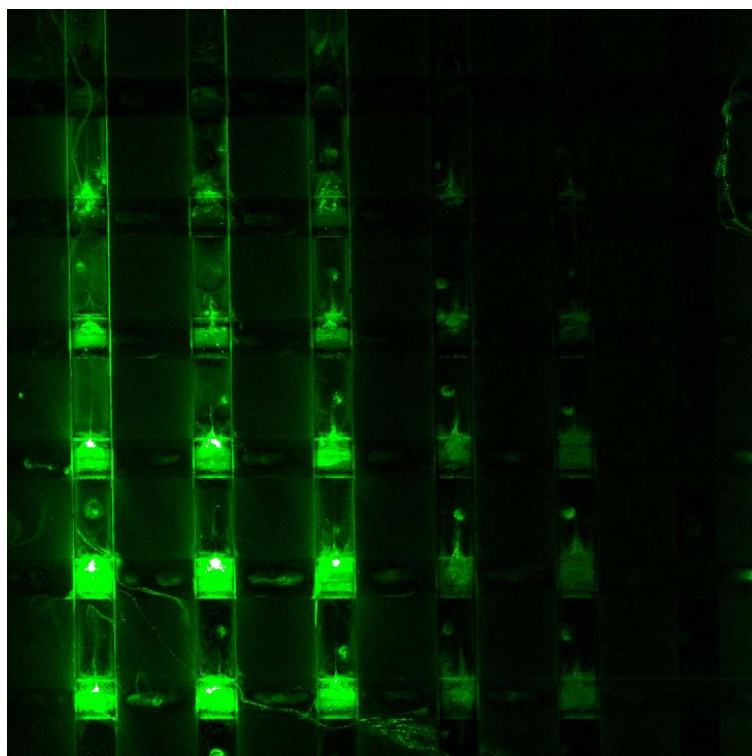
S2. Raw data used for generating the graph in Figure 4B.



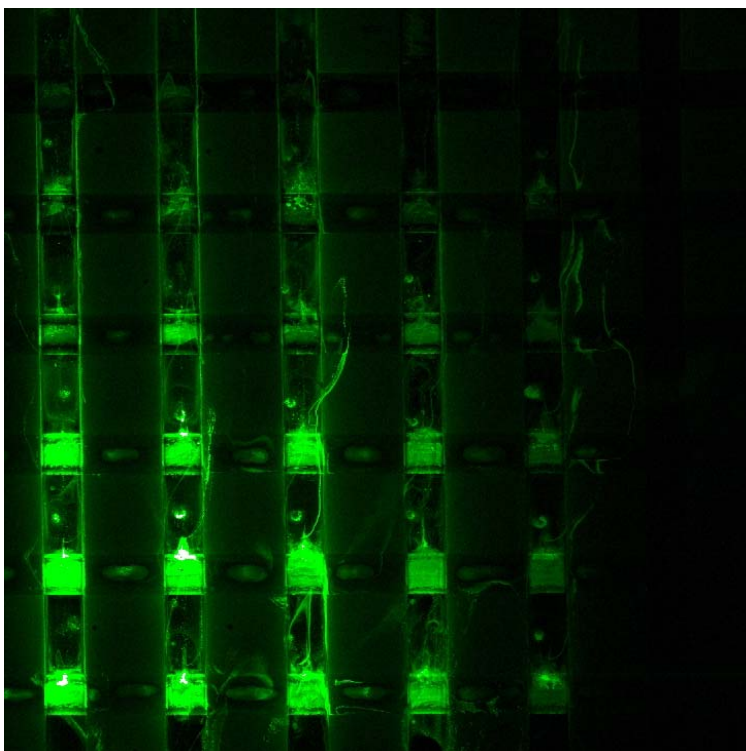
S3. Raw data used for generating the graph in Figure 4B.



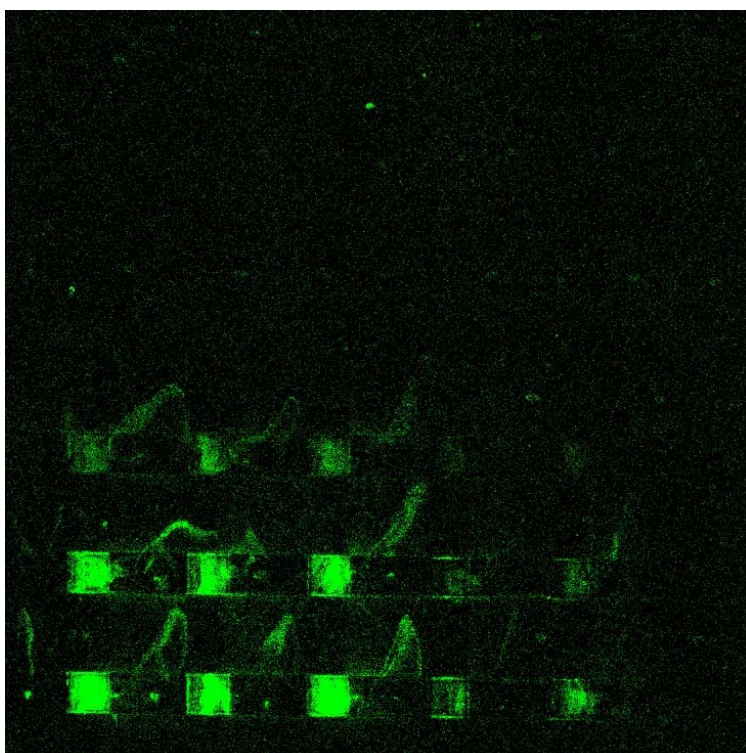
S4. Raw data used for generating the graph in Figure 4B.



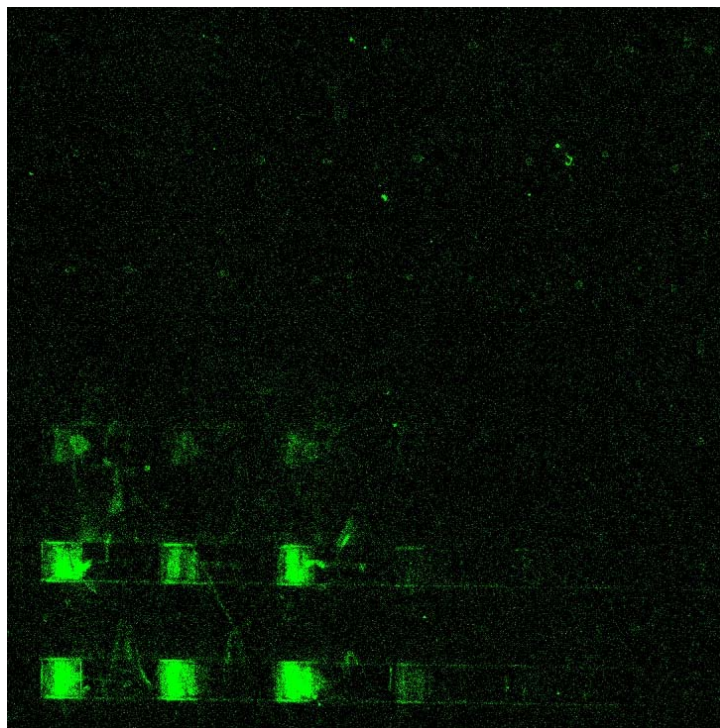
S5. Raw data used for generating the graph in Figure 5B.



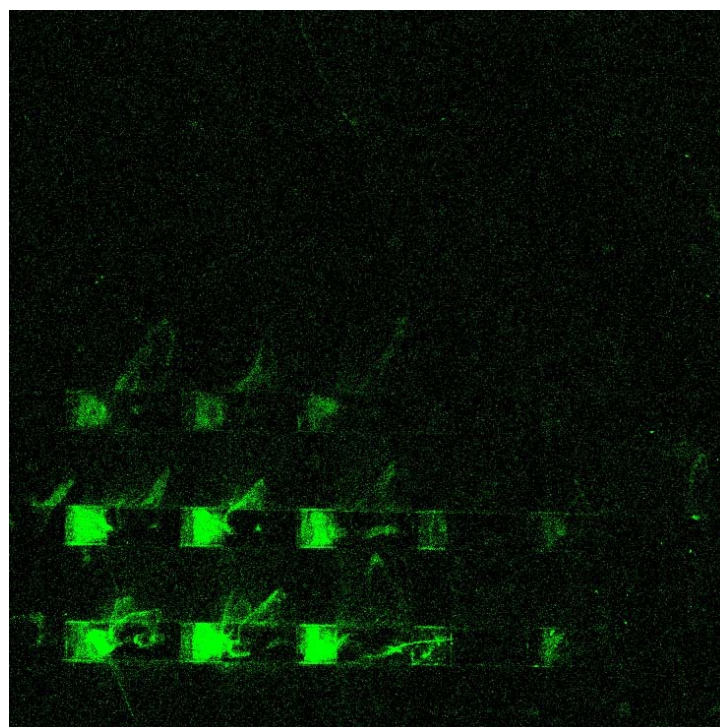
S6. Raw data used for generating the graph in Figure 5B.



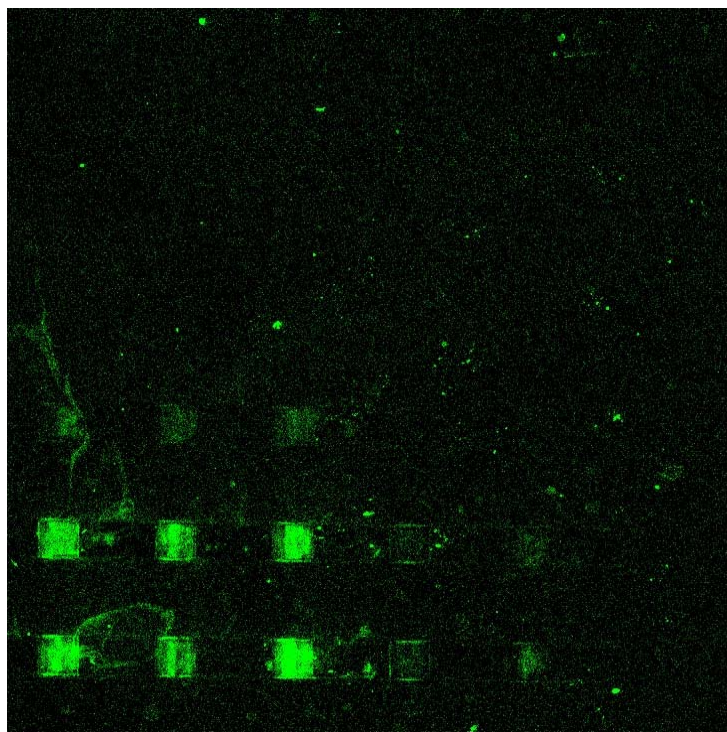
S7. Raw data used for generating the graph in Figure 5B.



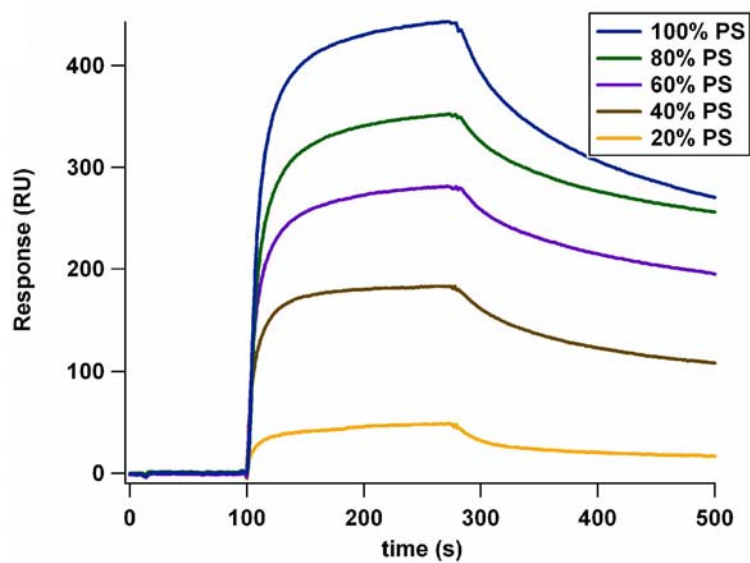
S8. Raw data used for generating the graph in Figure 5B.



S9. Raw data used for generating the graph in Figure 5B.



S10. Raw data used for generating the graph in Figure 5B.



S11. SPR results of annexin binding to PS Nanodiscs. The graph shows binding curves of 250 nM annexin to Nanodiscs of various PS content generated using 3 minute kinetic injections.