

# Spatial distribution of laminar flow-assisted dendritic amplification

*Kazuo Hosokawa\* and Mizuo Maeda*

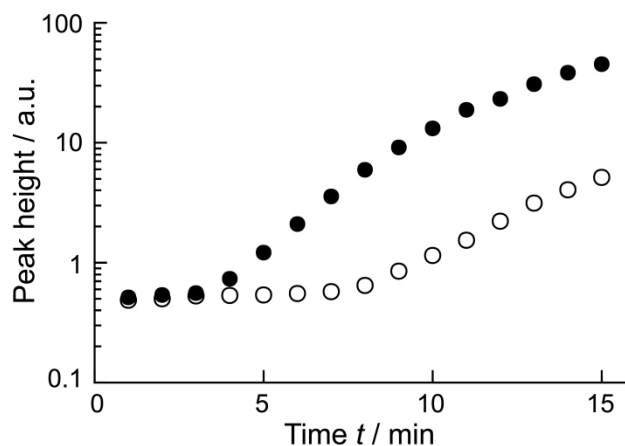
Bioengineering Laboratory, RIKEN

2-1 Hirosawa, Wako, Saitama, 351-0198 Japan

\*E-mail: k-hoso@riken.go.jp

## Electronic Supplementary Information

## Effect of the blocking solution on nonspecific adsorption



**Figure S1.** Time course of the peak height at  $y = 0.17$  mm. The two sets of data were obtained through LFDA after blocking with 1% BSA (●) and 1% BSA plus 0.1% casein-based commercial reagent (Roche #1096176) (○). Both the blocking solutions were prepared in PBS (pH 7.5). Other experimental conditions are detailed in the main text. The addition of Roche #1096176 effectively suppressed nonspecific adsorption, thus retarding the initiation of LFDA by 4–5 min. In general, the use of Roche #1096176 is favorable for detection purposes. However, for the purpose of the present study, we judged 1% BSA alone to be better because of the moderate degree of nonspecific adsorption.