

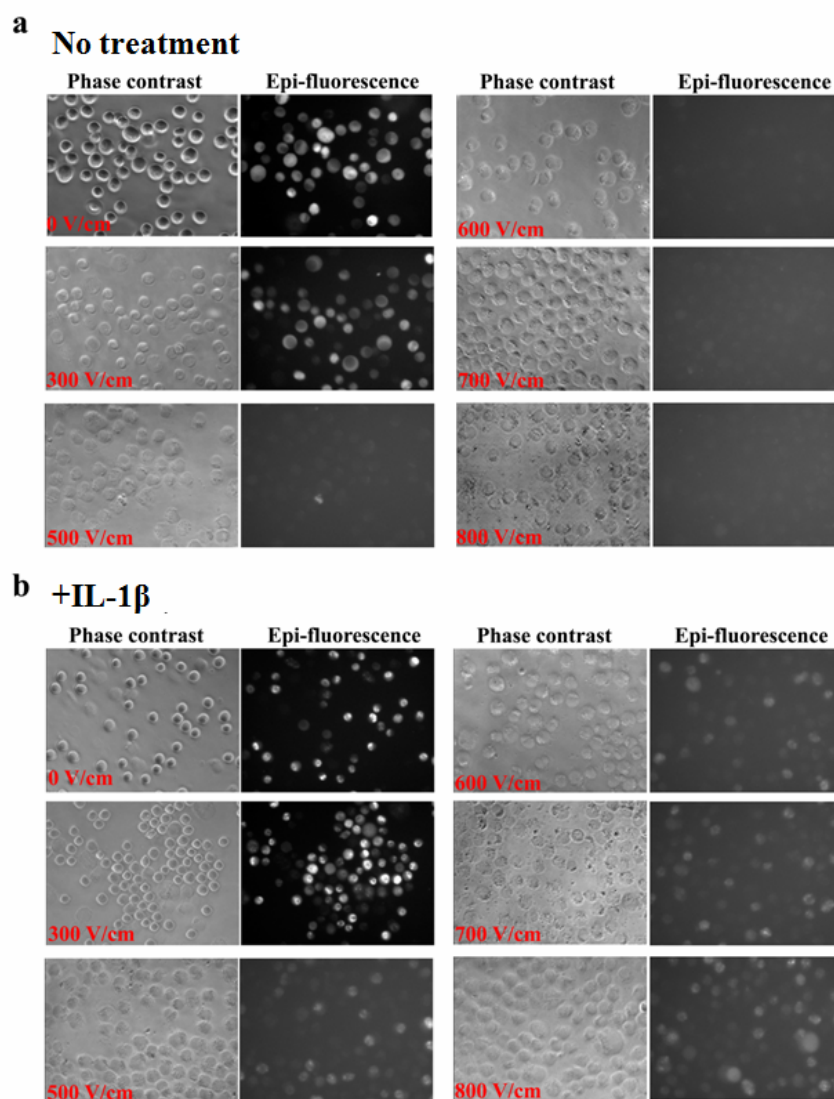
**Electronic Supplementary Information (ESI)**

**Kinetics of NF- $\kappa$ B Nucleocytoplasmic Transport Probed by Single-cell  
Screening without Imaging**

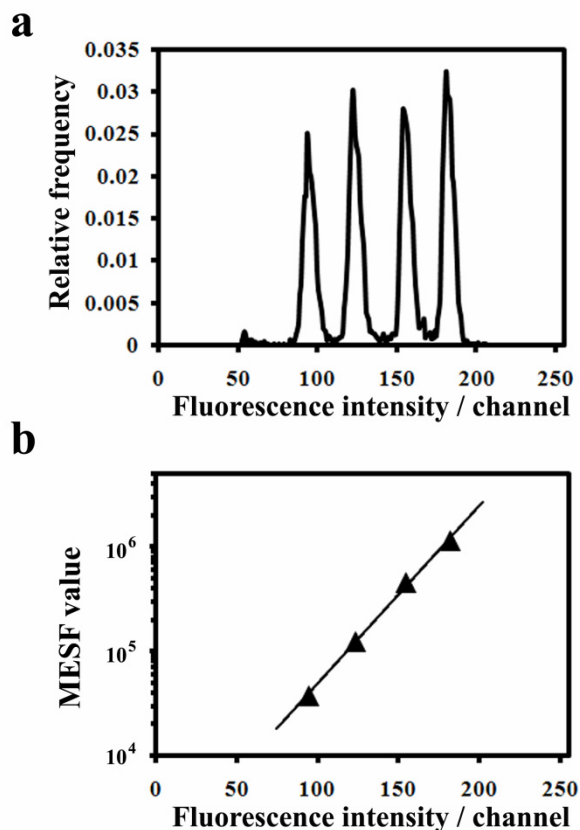
*Jun Wang, Bei Fei, Yihong Zhan, Robert L. Geahlen & Chang Lu<sup>\*</sup>*

Correspondence should be addressed to C. L. ([changlu@vt.edu](mailto:changlu@vt.edu)).

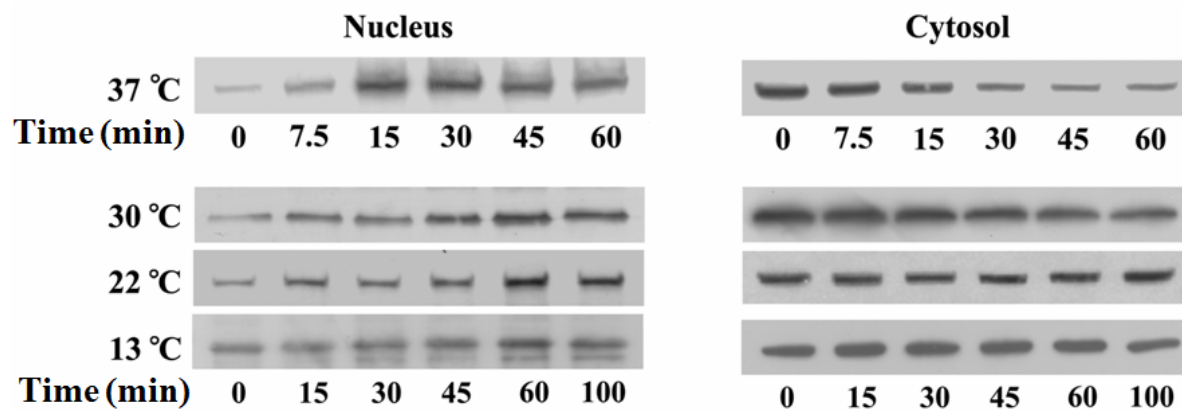
## Supplementary Data



**Figure S1.** The phase contrast and epi-fluorescence images of NFκBp65-GFP cells (a) without stimulation and (b) stimulated with 20 ng/ml IL-1 $\beta$  for 0.5 h at 37°C after electroporative flow cytometry screening under different field intensities and a field duration of 120 ms.



**Figure S2.** Calibration of the fluorescence signals. **(a)** The histograms of fluorescent beads with various predefined fluorescence intensity levels (high level Quantum FITC MESF Kits, Bangs Laboratories). **(b)** The working curve with the Molecules of Equivalent Soluble Fluorophores (MESF) values of the beads plotted against the peak channel numbers detected by our system ( $R^2=0.997$ ). The plot allows the conversion between the channel numbers detected by our system and the MESF values.



**Figure S3.** Subcellular fractionation/Western blotting results that indicate NF-κB amount in the nucleus and the cytosol after stimulation by IL-1 $\beta$  under different temperatures and after various stimulation times.