

Electronic Supplementary Information (ESI)

A three-layer PMMA electrophoresis microchip with Pt microelectrodes insulated by a thin film for contactless conductivity detection†

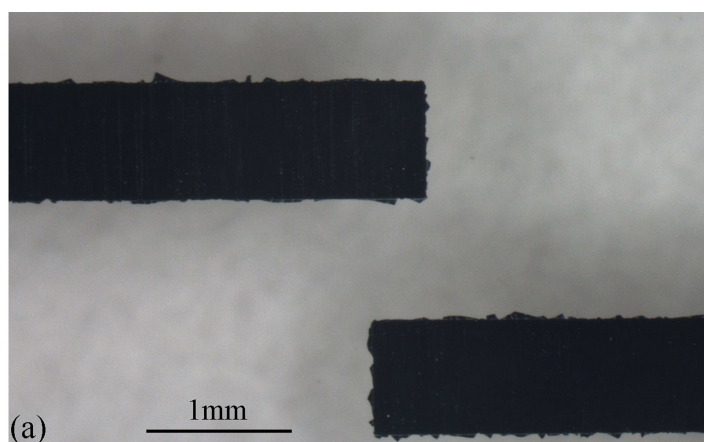
5 Junshan Liu,^{*a} Junyao Wang^a, Zuanguang Chen^b, Yong Yu^c, Xiujuan Yang^b, Xianbin Zhang^a, Zheng Xu^a, Chong Liu^a

Received (in XXX, XXX) Xth XXXXXXXXX 200X, Accepted Xth XXXXXXXXX 200X

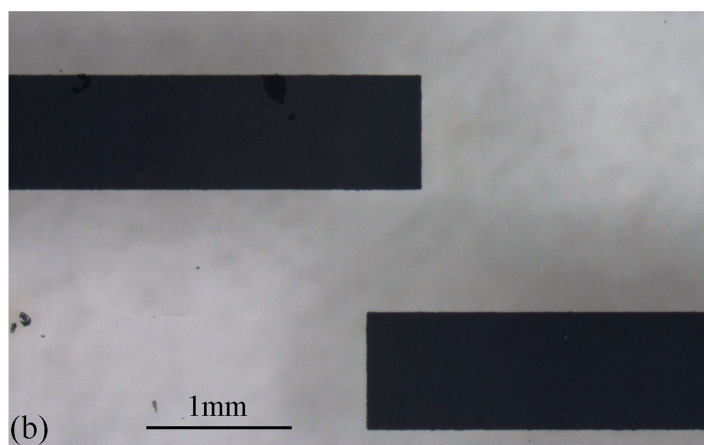
First published on the web Xth XXXXXXXXX 200X

DOI: 10.1039/b000000x

10



15



20

25 Fig. S1 (a) Pt microelectrodes with rough edges; (b) Pt microelectrodes with smooth edges fabricated by a modified lift-off process.