

Electronic Supplementary Material

Graph supporting the storage stability

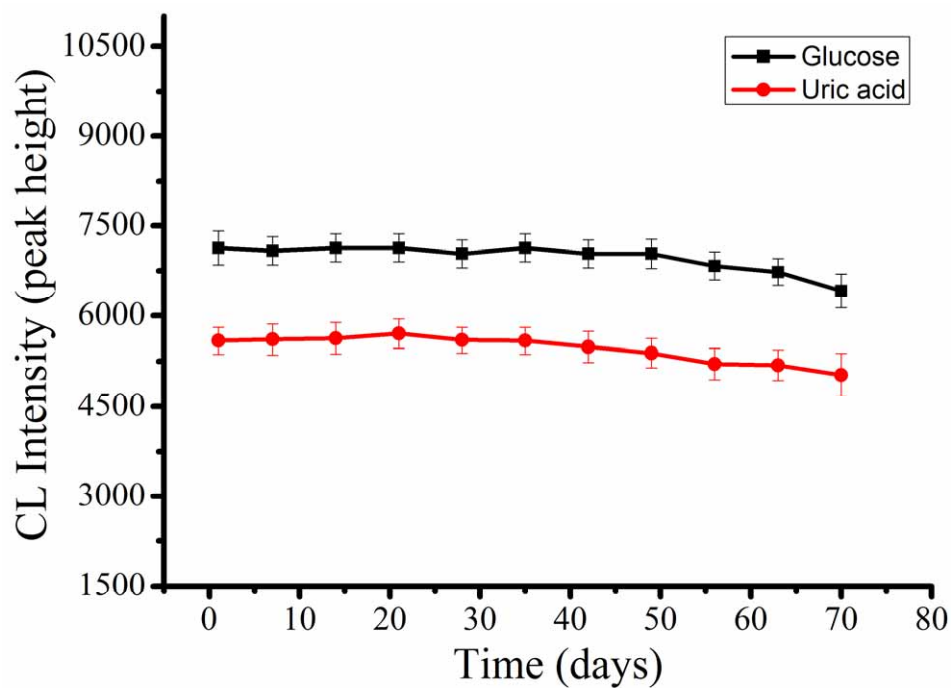


Figure S1 The storage stability of the μ PCAD biosensor measured at intervals of 1 week (n=11), it remained about 90% of its initial CL intensity after 10 weeks.

Data supporting the effect of interference of components present in urine

Table S1. Quantitative results for the interference of the components present in urine. (4.0 mmol·L⁻¹ glucose and 4.0 mmol·L⁻¹ uric acid)

Tolerable concn. ratio	Component	Glucose		Uric acid	
		Observed concn. (mmol·L ⁻¹) ^a	Relative deviation %	Observed concn. (mmol·L ⁻¹) ^a	Relative deviation %
100	Na ⁺	4.17	4.25	4.13	3.34
	CO ₃ ²⁻	4.19	3.75	4.19	4.74
	Ca ²⁺	3.84	4.08	3.85	3.72
	Cl ⁻	4.13	3.27	4.20	5.02
	SO ₄ ²⁻	3.69	7.75	3.78	5.53
	Mg ²⁺	4.29	7.25	4.22	5.51
	K ⁺	3.83	4.15	4.18	4.54
	PO ₄ ³⁻	4.21	5.27	4.24	6.05
	NH ₄ ⁺	4.30	7.58	4.23	5.72
	urea	3.82	4.59	3.83	4.27
50	creatinine	3.71	7.29	3.77	5.79
	Fe ³⁺	3.75	6.11	3.73	6.87
	oxalate	4.23	5.64	4.27	6.72
	L-lysine	3.72	7.03	3.76	6.09
5	lactic acid	4.31	7.83	4.29	7.27
	citric acid	4.26	6.17	4.26	6.38

^a Each sample was measured 11 times.