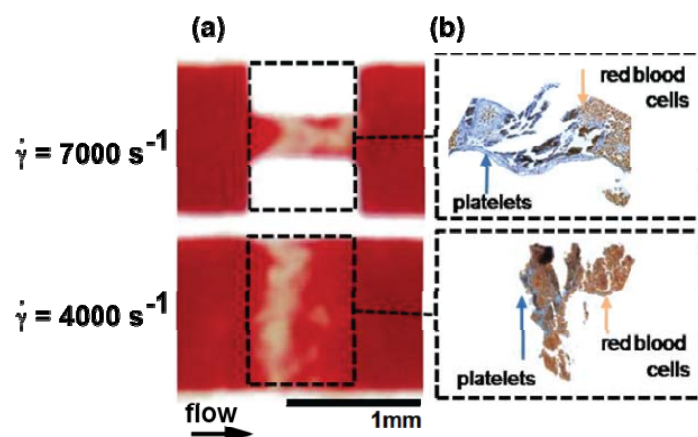


Manuscript ID LC-ART-11-2011-021145

Title: Microfluidic system for simultaneous optical measurement of platelet aggregation at multiple shear rates in whole blood

Electronic Supplementary Information



Supp. Fig. 1 Microscopy images (a) of thrombi formed within device stenoses at higher shear rate, 7000 s^{-1} (*top*) and lower shear rate, 4000 s^{-1} (*bottom*). Subsequent histology (b) via Carstairs staining reveals expected platelet thrombi (stained blue) at high shear rate and red blood cells (stained orange/red) mixed with platelets in thrombi at the lower shear rate.