

Supplementary Information

**Portable flow-through fluorescent immunoassay
lab-on-a-chip using ZnO nanorod-decorated glass capillaries**

*Weihua Hu, Zhisong Lu, Yingshuai Liu, Tao Chen, Xiaoqun Zhou, and Chang Ming Li**

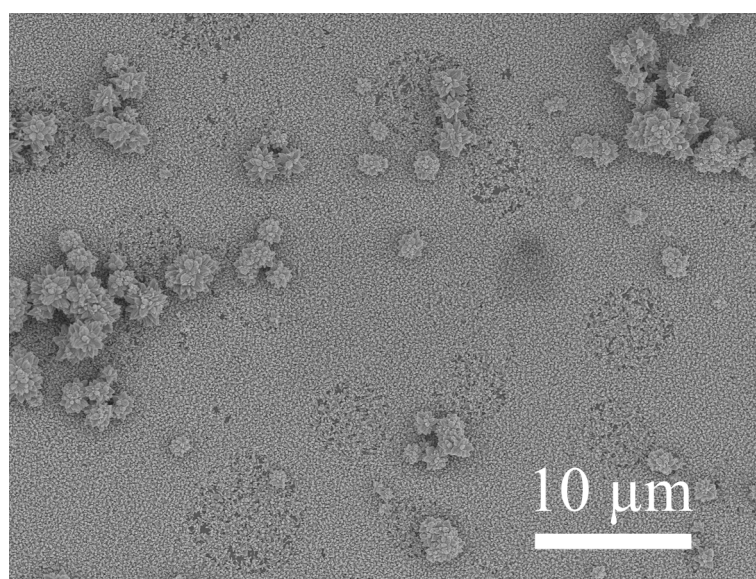


Fig. S1 SEM image of ZnO nanorods grown on the inner wall of glass capillary
with 100 mM zinc nitrate solution

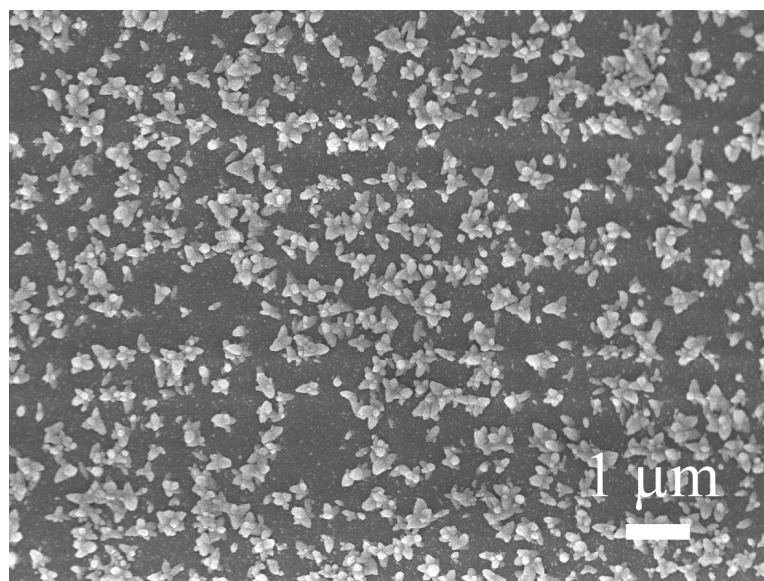


Fig. S2 SEM image of ZnO nanorods grown on the inner wall of glass capillary
with 10 mM zinc nitrate solution

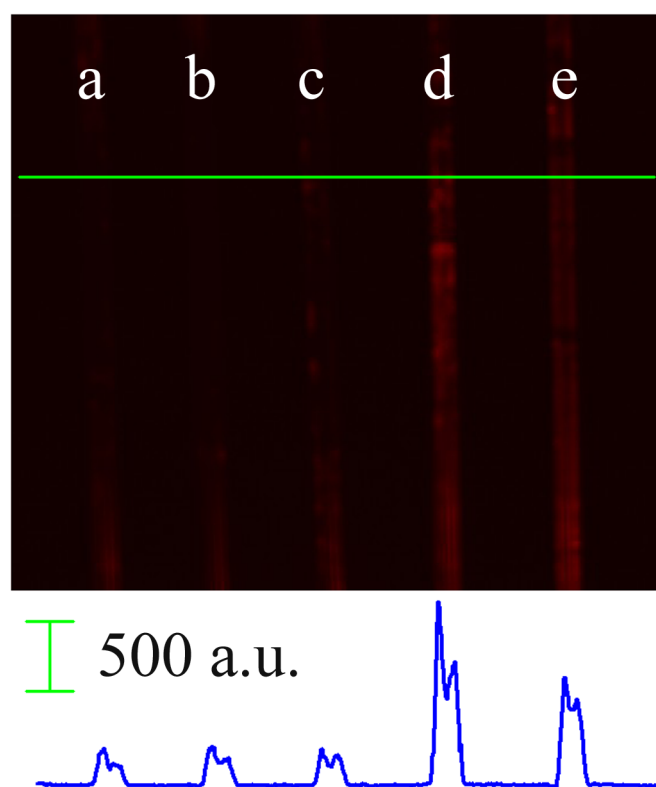


Fig. S3 Fluorescent images and corresponding fluorescent intensity profiles of pristine
glass capillary based biotube for PSA immunoassay in human serum; PSA
concentration from *a* to *e*: 0, 1, 10, 100, 1000 ng mL⁻¹.