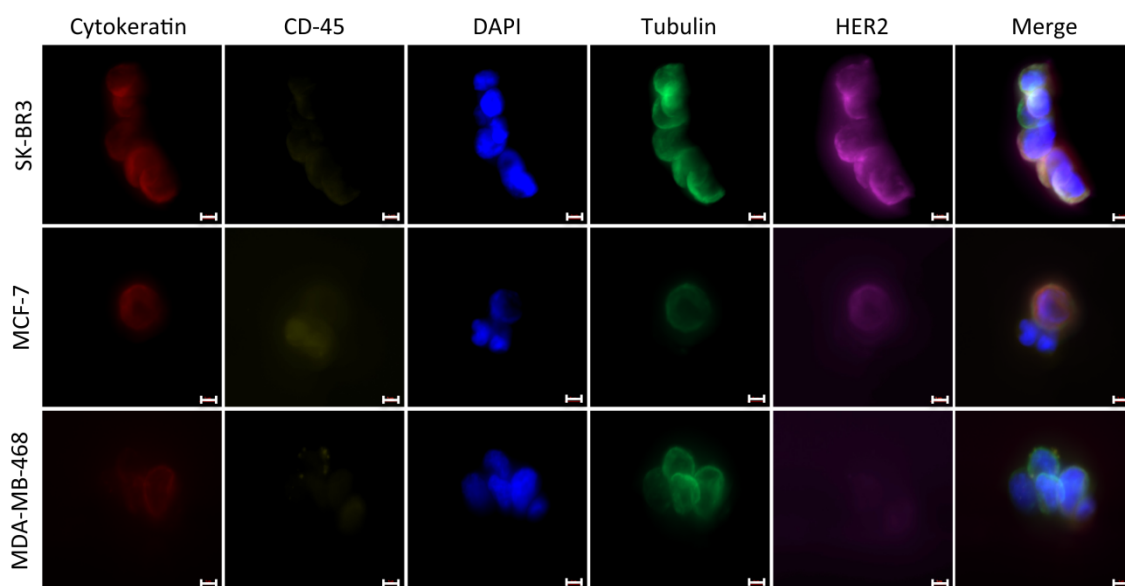


### Supplementary Figure 1



**Supplementary Figure 1.** Evaluation of sensitivity of HER2 staining on breast cancer cells lines spiked into 1 ml of healthy donor blood and captured by the HER2-GEDI device. Representative breast cancer cell lines with different HER2 protein expression levels (SKBR3, high; MCF7, intermediate; MDA-MB-468, low) were captured on the chip and processed for multiplex immunofluorescent staining followed by confocal microscopy. Note that HER2 staining on the device accurately reflects the dynamic range of HER2 expression. Scale bar: 5  $\mu$ m.