

Figure S1 A

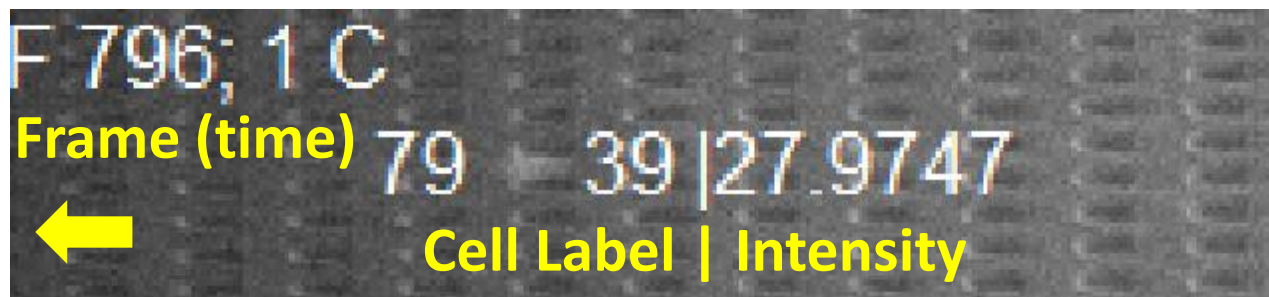


Figure S1B: Reduced RBC deformability over storage time

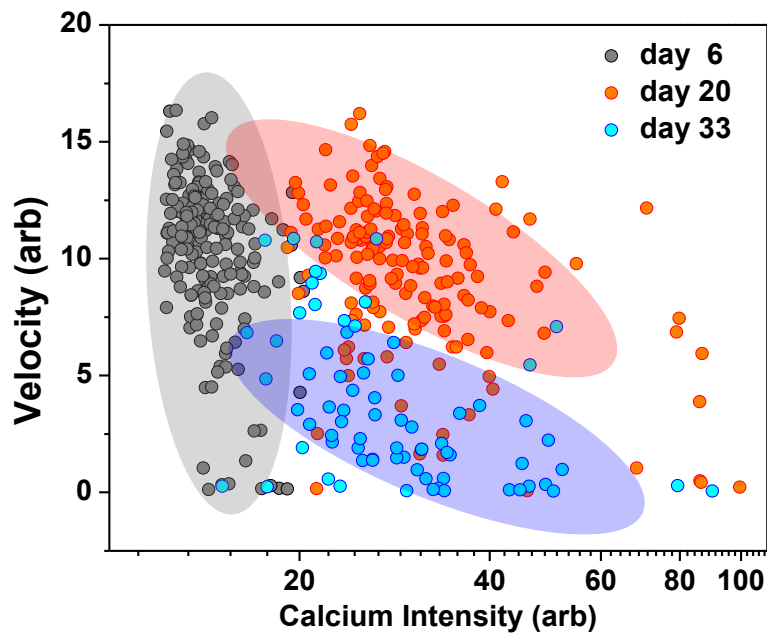
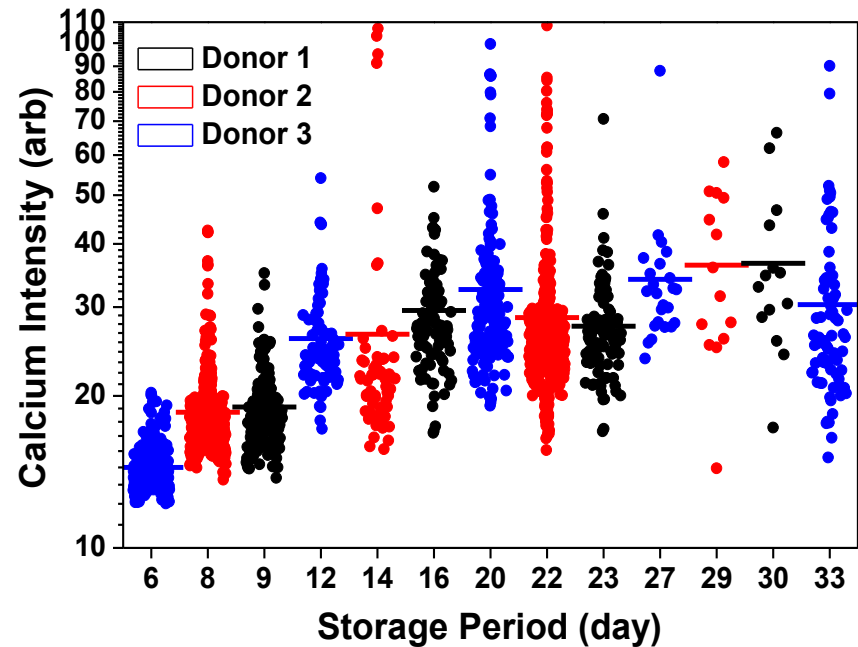
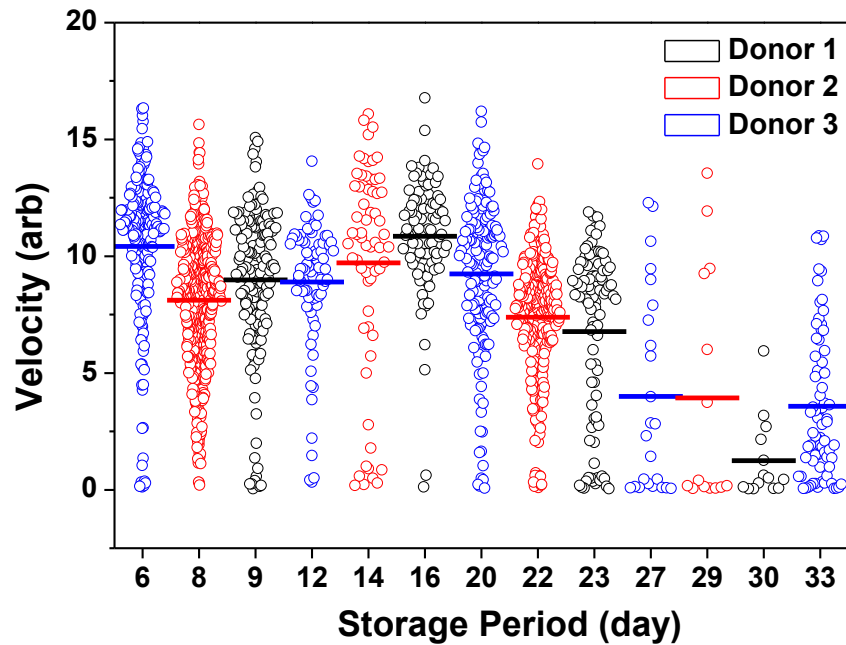


Figure S1 C

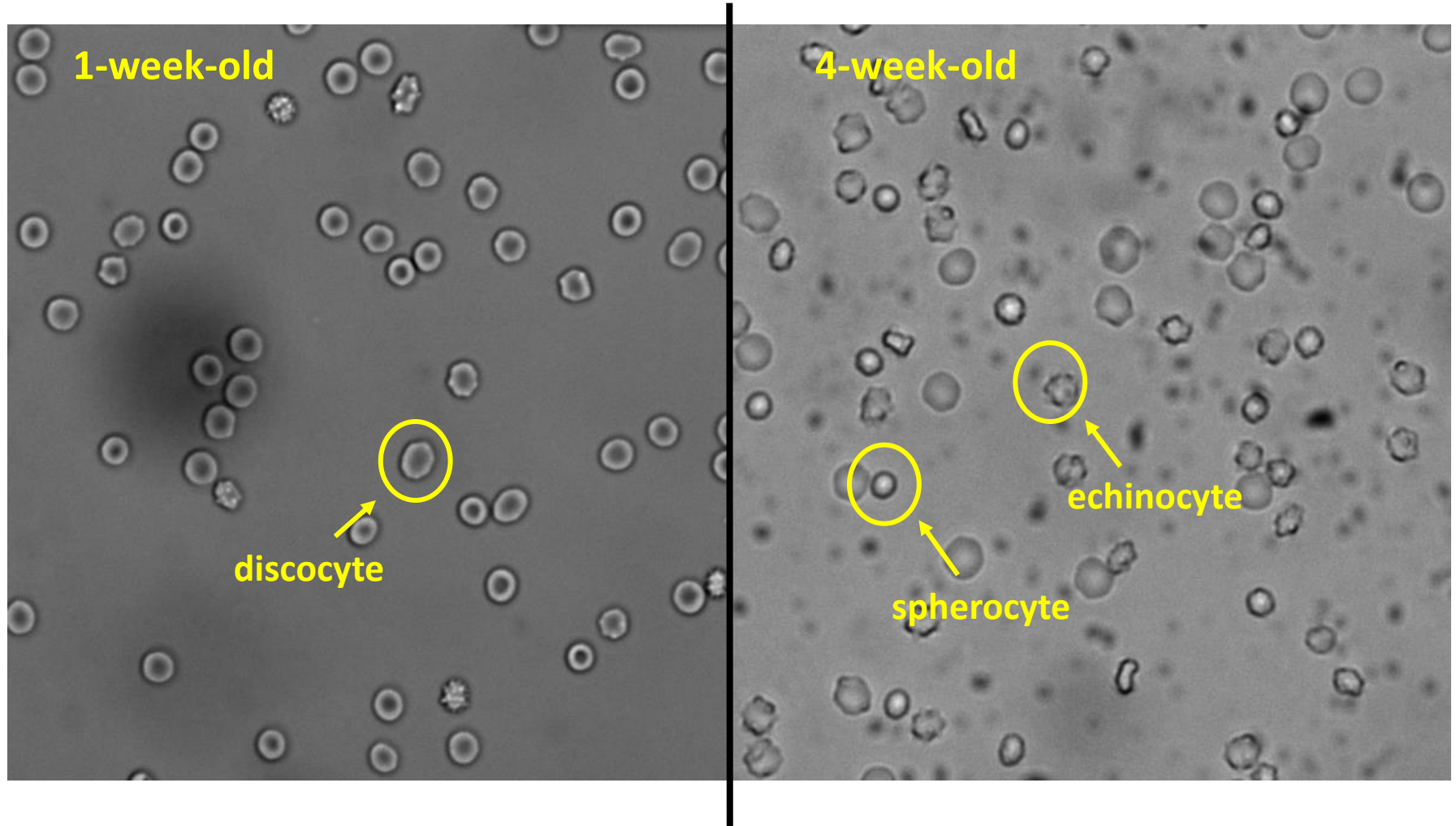


Figure S2 A

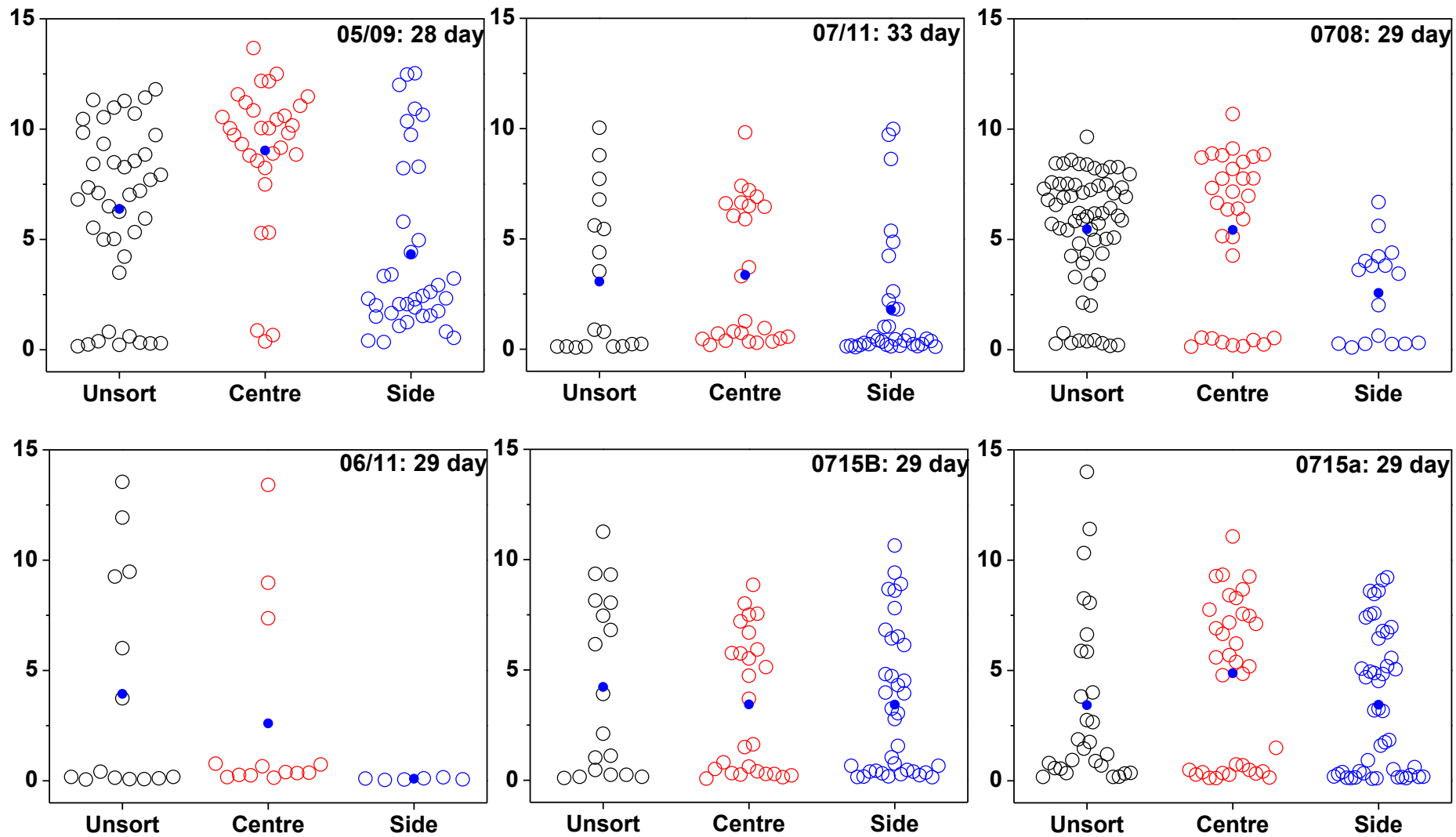


Figure S2 B

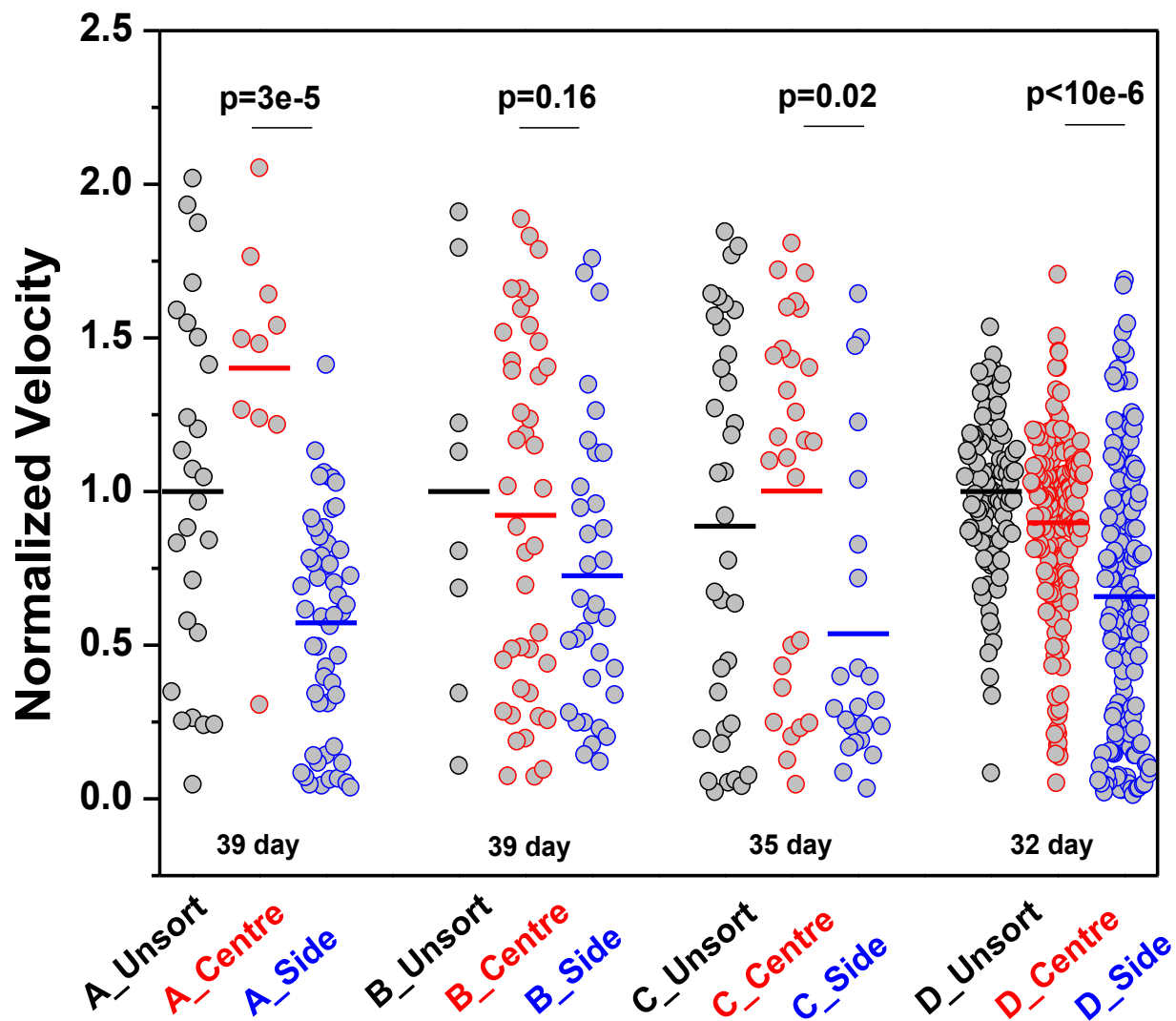


Figure S2 B

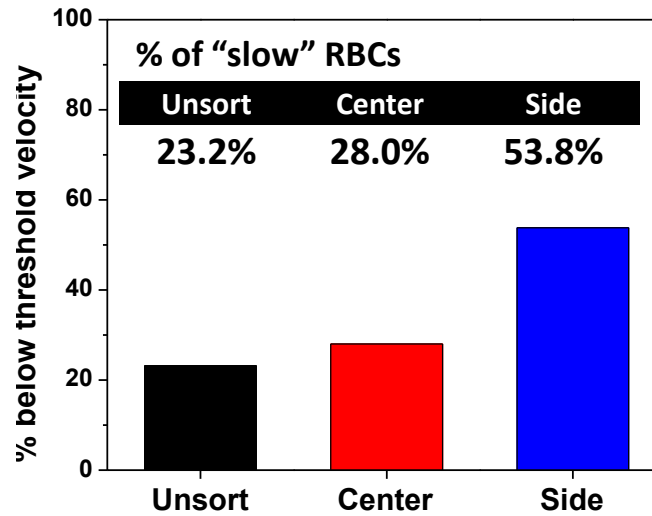
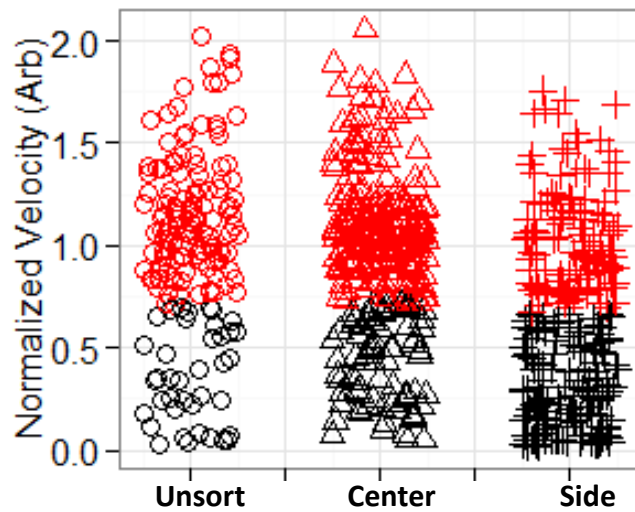
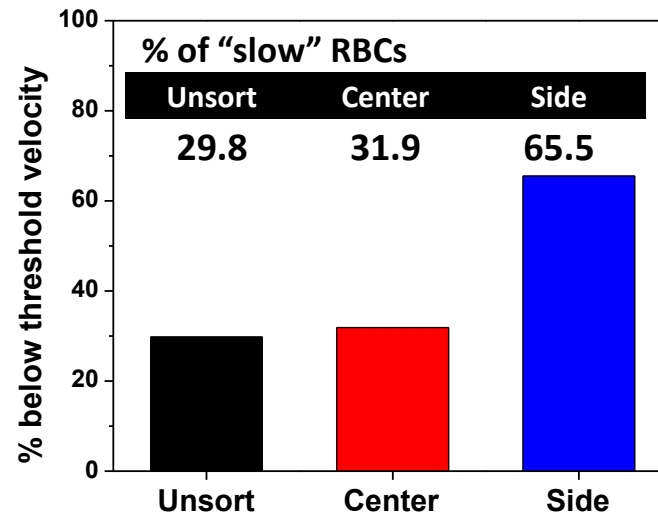
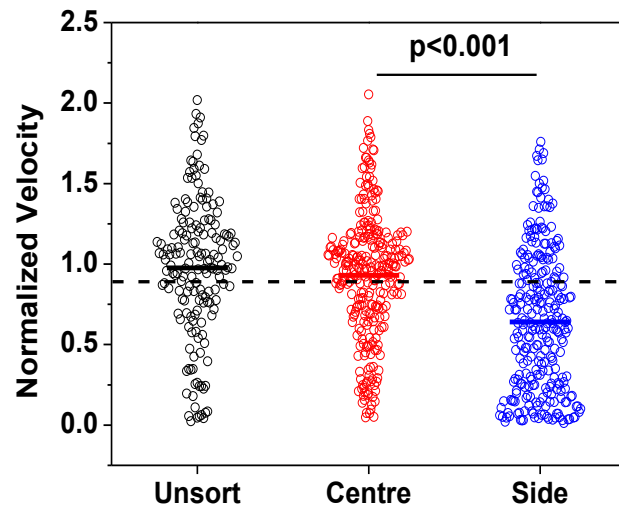


Figure S3

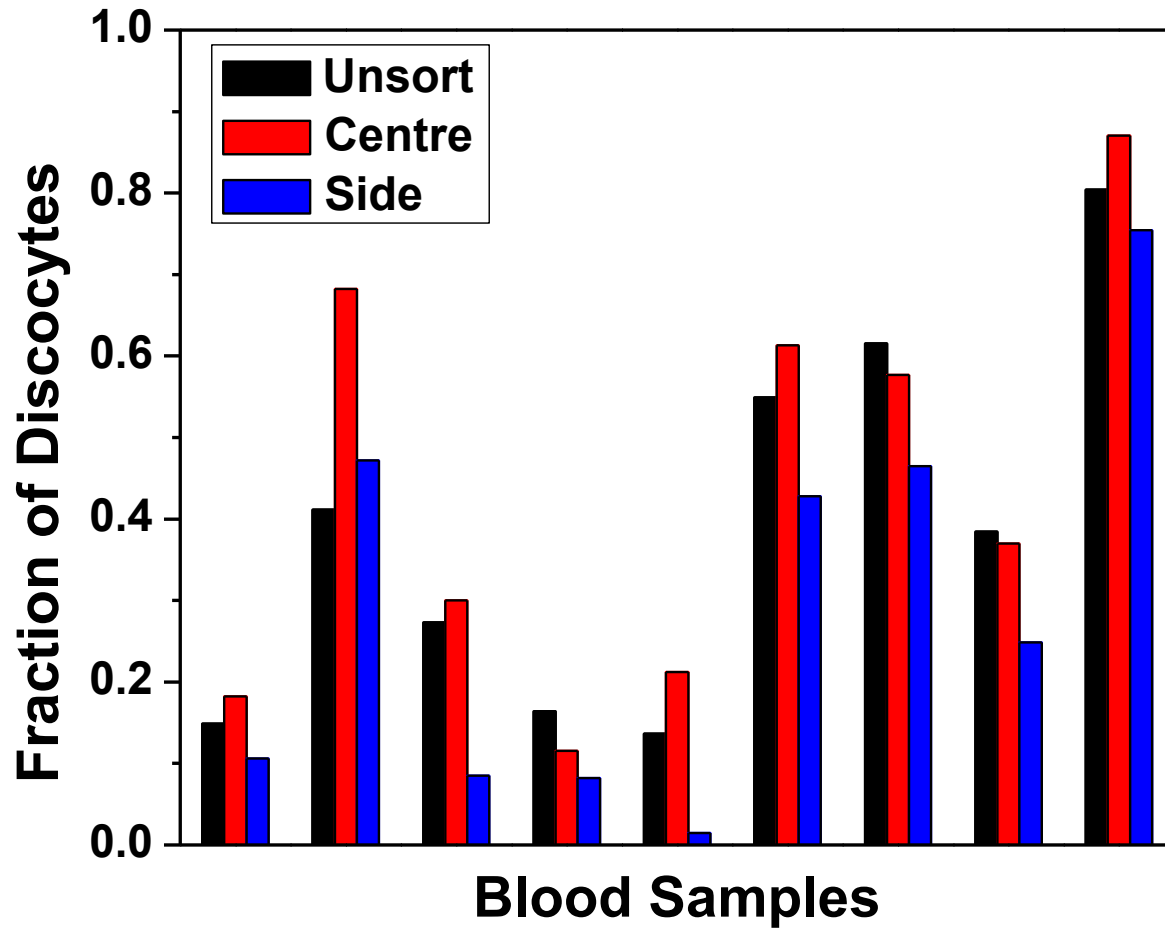


Figure S4A

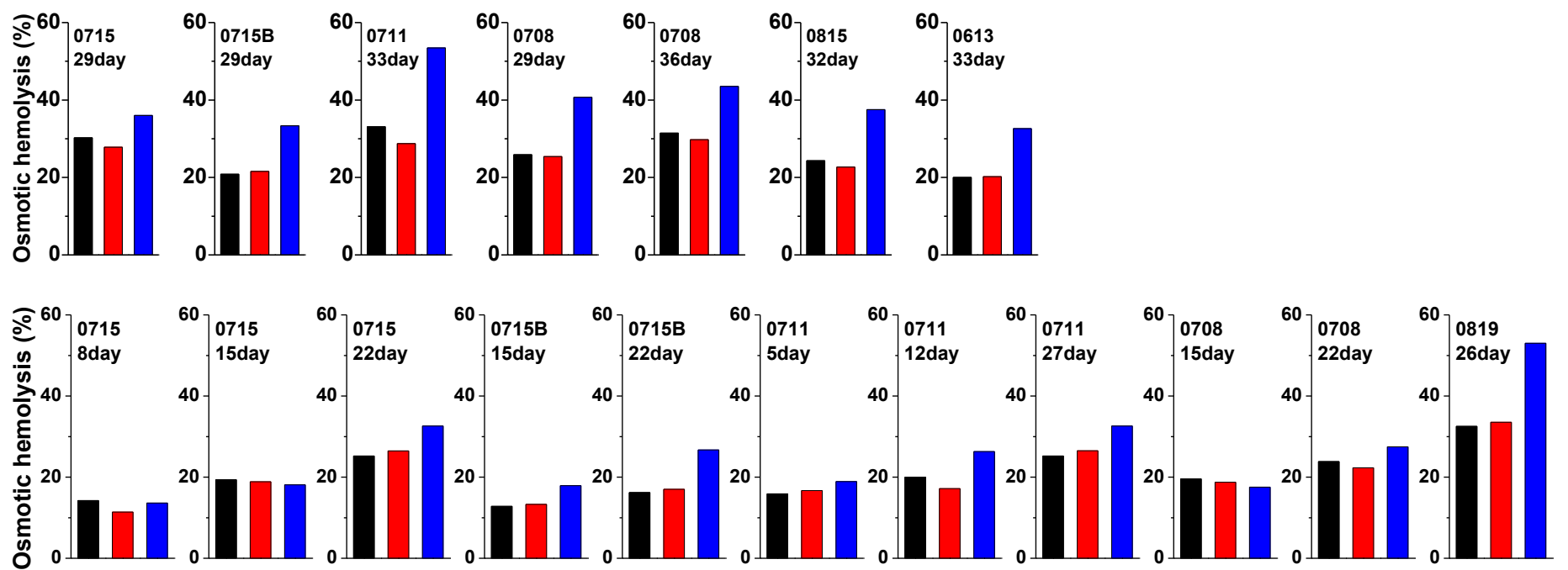
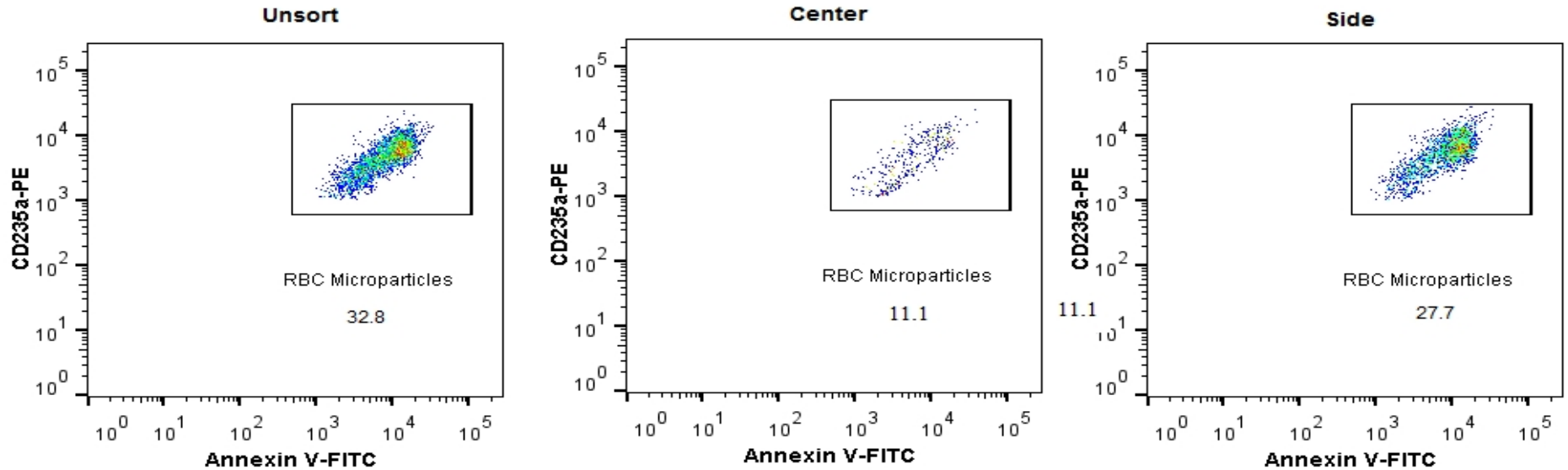


Figure S4B: microparticle analyses after sorting



Samples	Cell number (10^6 /ml)	Cell number / μ L	Normalized MPs #
0815 Unsort	172.00	172000	0.04
0815 Center	194.40	194400	0.09
0815 Side	22.24	22240	0.19
0815B Unsort	123.2	123200	0.08
0815B Center	170.4	170400	0.01
0815B Side	16.48	16480	0.42
0819 Unsort	184.8	184800	0.07
0819 Center	187.2	187200	0.03
0819 Side	22.72	22720	0.36