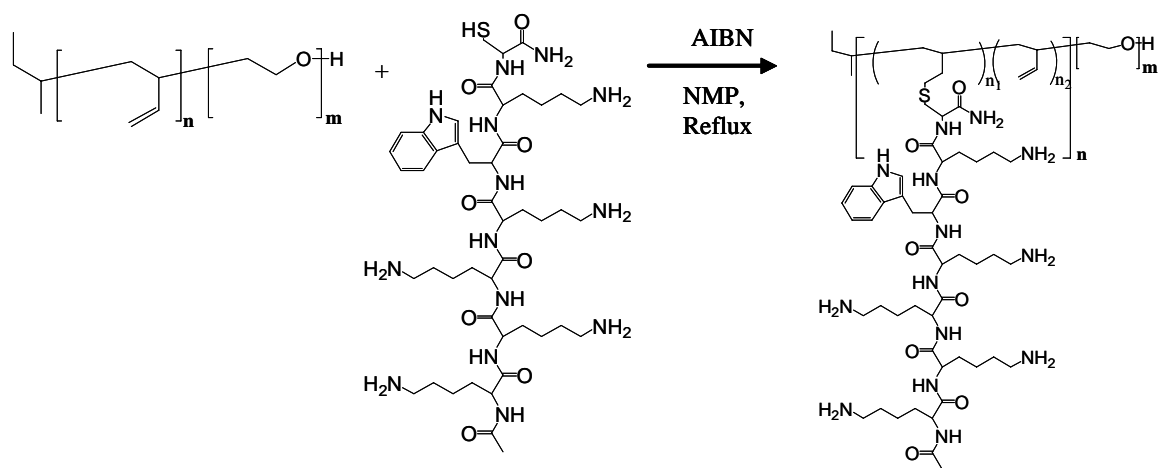
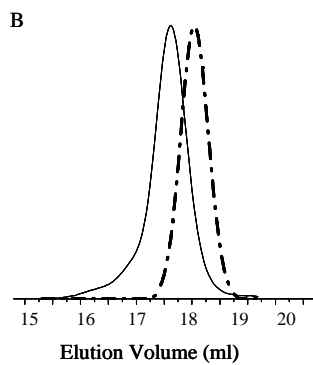
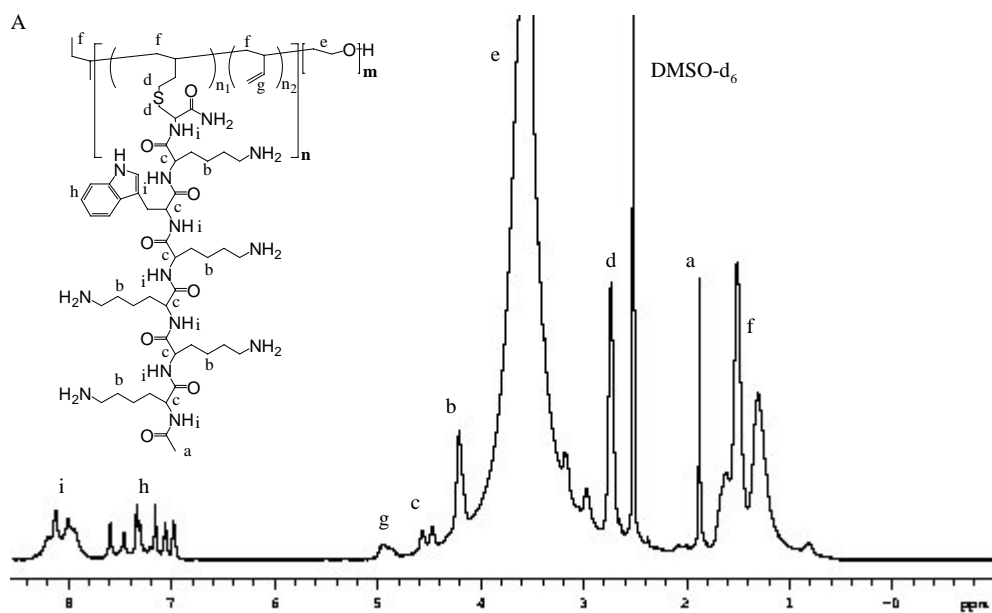


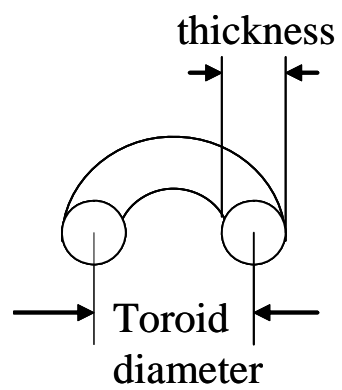
Supporting Information



S1. Grafting of Cys-oligopeptides onto the PEG-*b*-PBD via free radical addition route.



S2. Characterization of the polymer - peptide hybrid by ¹H NMR and GPC. (A) Representative ¹H NMR (solvent: DMSO-d₂) of **PP**₄₀ and (B) GPC (eluent: NMP) of PEG-*b*-PBD precursor (solid line) and **PP**₄₀ (dashed line).



S3. Definition of the diameter and thickness of a toroid.