

S8 Phylogenies for putative Chlamydomonas enzymes of the predicted ergosterol pathway

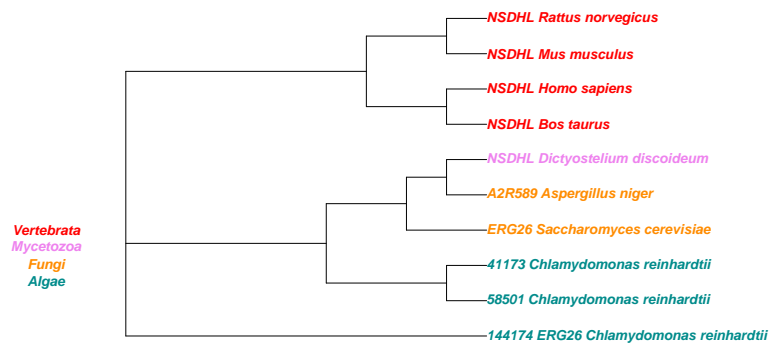


Fig. 1. Phylogenetic relationship of the enzymes for the reaction 1.1.1.170 in *Chlamydomonas* (144174, 58501, 41173) to annotated sequences from other species.

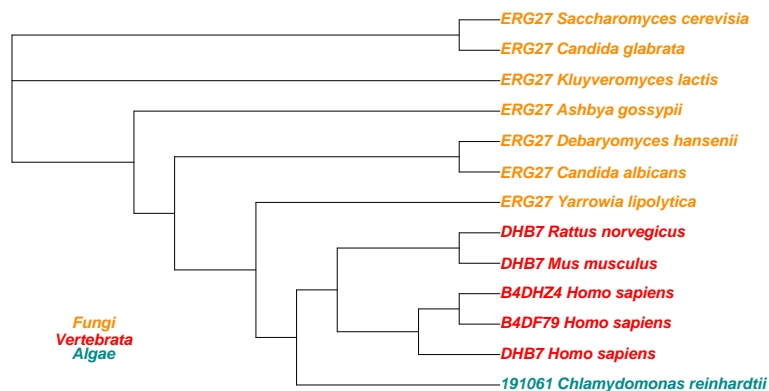


Fig. 2. Phylogenetic relationship of the enzyme for the reaction 1.1.1.270 in *Chlamydomonas* (191061) to annotated sequences from other species.

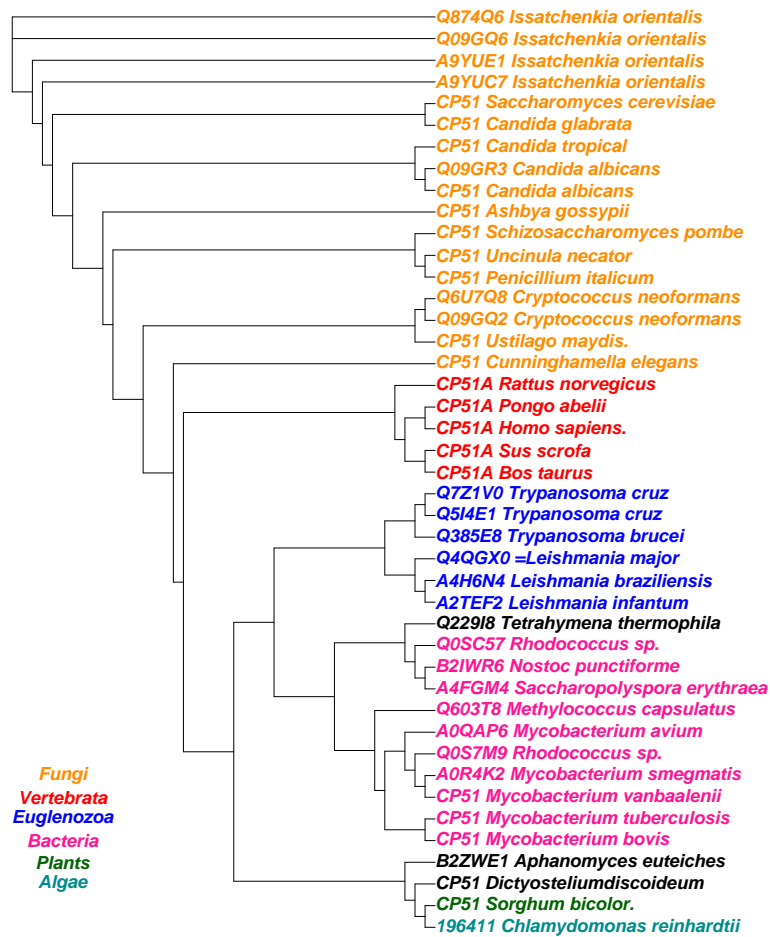


Fig. 3. Phylogenetic relationship of the enzyme for the reaction 1.14.13.70 in *Chlamydomonas* (196411) to annotated sequences from other species.

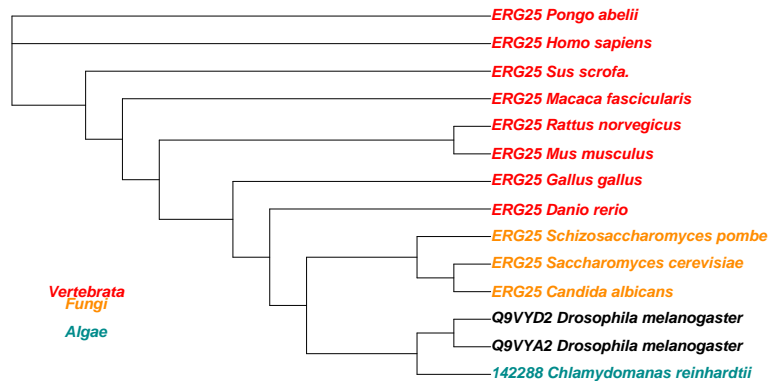


Fig. 4. Phylogenetic relationship of the enzyme for the reaction 1.14.13.72 in *Chlamydomonas* (142288) to annotated sequences from other species.

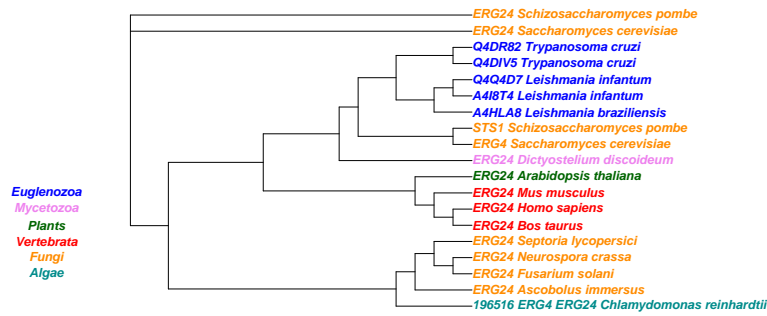


Fig. 5. Phylogenetic relationship of the enzyme for the reaction 1.3.1.70 or 1.3.1.71 in Chlamydomonas (196516) to annotated sequences from other species.

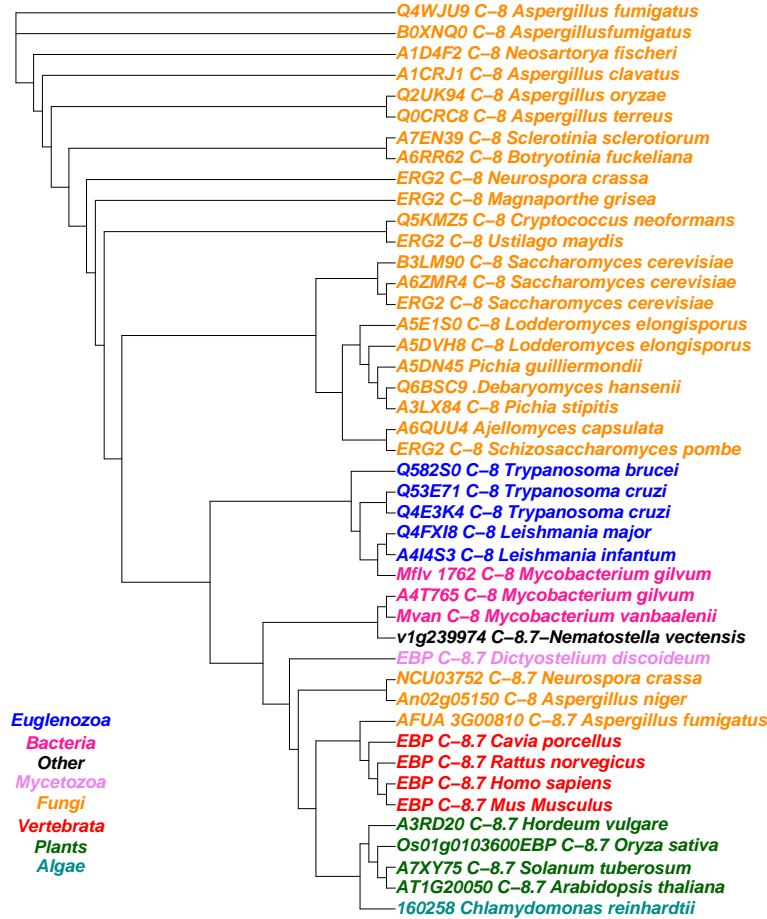


Fig. 6. Phylogenetic relationship of the enzyme for the reaction 5.3.3.5 or C-8-isomerase in Chlamydomonas (160258) to annotated sequences from other species.