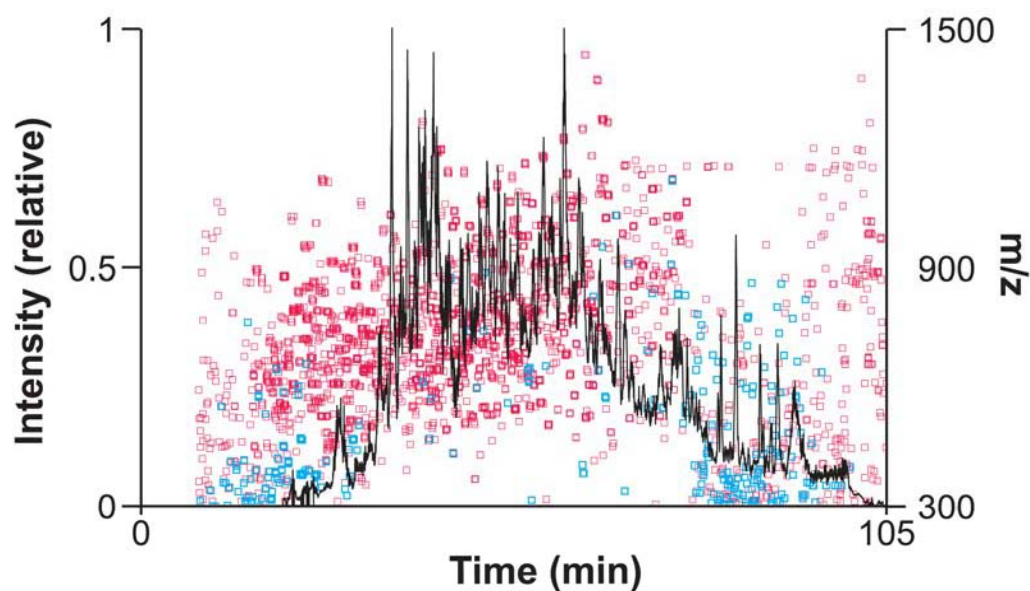


### Supplementary Figure 1



**Supplementary Figure 1.** Elution times of phosphorylated versus non-phosphorylated peptides from a  $C_{18}$  reversed phase-column. Elution time versus the mass to charge ratio ( $m/z$ ) of all peptides detected in a sample enriched for phosphopeptides is overlaid over top of the total ion chromatogram. Phosphopeptides are shown in red and non-phosphopeptides are shown in blue.