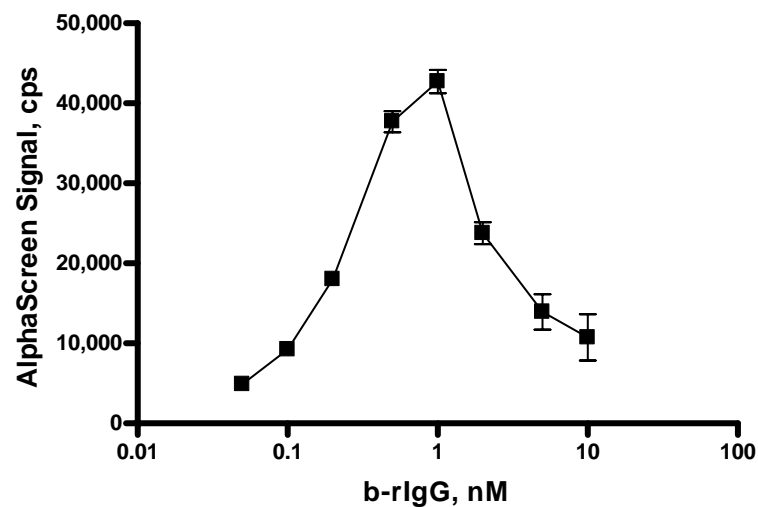


Supplemental Figure 1. Reagents for the methyltransferase assay are stable upon storage overnight at 4 °C. G9a methyltransferases reactions were performed with 20 nM enzyme, 20 μ M SAM, and 500 nM b-H3(1-11) peptide for 2 h in 384-well plate format. Reagents were assayed fresh (0 h) and following overnight storage (15 h) with no loss in enzymatic activity. Data represent the mean and standard deviation of 4 replicate measurements.



Supplemental Figure 2. Biotinylated rabbit IgG was titrated in triplicate in 384-well plates with 20 $\mu\text{g/mL}$ *anti*-rlgG antibody- and streptavidin-coated AlphaScreen beads. The AlphaScreen hook point occurs at concentrations of b-rlgG greater than 1 nM. The mean and standard deviation of 3 replicate measurements are shown.