

**Electronic supplementary information for:**

**Urinary metabolic profiling of colorectal carcinoma based on online affinity solid phase extract-high performance liquid chromatography and ultra performance liquid chromatography-mass spectrometry**

**Wenzhao Wang,<sup>‡,a</sup> Bo Feng,<sup>‡,b</sup> Xiang Li<sup>1,a</sup>, Peiyuan Yin,<sup>a</sup> Peng Gao,<sup>a</sup> Xinjie Zhao,<sup>a</sup> Xin Lu,<sup>a</sup> Minhua Zheng<sup>b</sup> and Guowang Xu<sup>a</sup>**

<sup>a</sup> CAS Key Laboratory of Separation Science for Analytical Chemistry<sup>†</sup>, Dalian Institute of Chemical Physics, Chinese Academy of Sciences, Dalian 116023, China. E-mail: [xugw@dicp.ac.cn](mailto:xugw@dicp.ac.cn). Fax: 0086-411-84379559

<sup>b</sup> Surgery Department of Ruijin Hospital, Shanghai Jiaotong University School of Medicine, Shanghai 200025, China. E-mail: [zmhtiger@yeah.net](mailto:zmhtiger@yeah.net). Fax: 0086-21-64458887

<sup>‡</sup> Equal contribution.

To whom correspondence should be addressed:

Prof. Dr. Guowang Xu, CAS Key Laboratory of Separation Science for Analytical Chemistry, Dalian Institute of Chemical Physics, Chinese Academy of Sciences, Dalian 116023, China.

Prof. Dr. Minhua Zheng, Surgery Department of Ruijin Hospital, Shanghai Jiaotong University School of Medicine, Shanghai 200025, China.

**Figure S1.** Extracted ion chromatograms and the MS/MS spectra of unknown or unidentified compounds. (A)  $m/z$  and retention time of these four compounds; (B)~(E) MS/MS spectra of ion with  $m/z$  198.956, 245.149, 274.274 and 281.101, respectively. Low, middle and high energies were 5V, 15V and 30V, respectively.

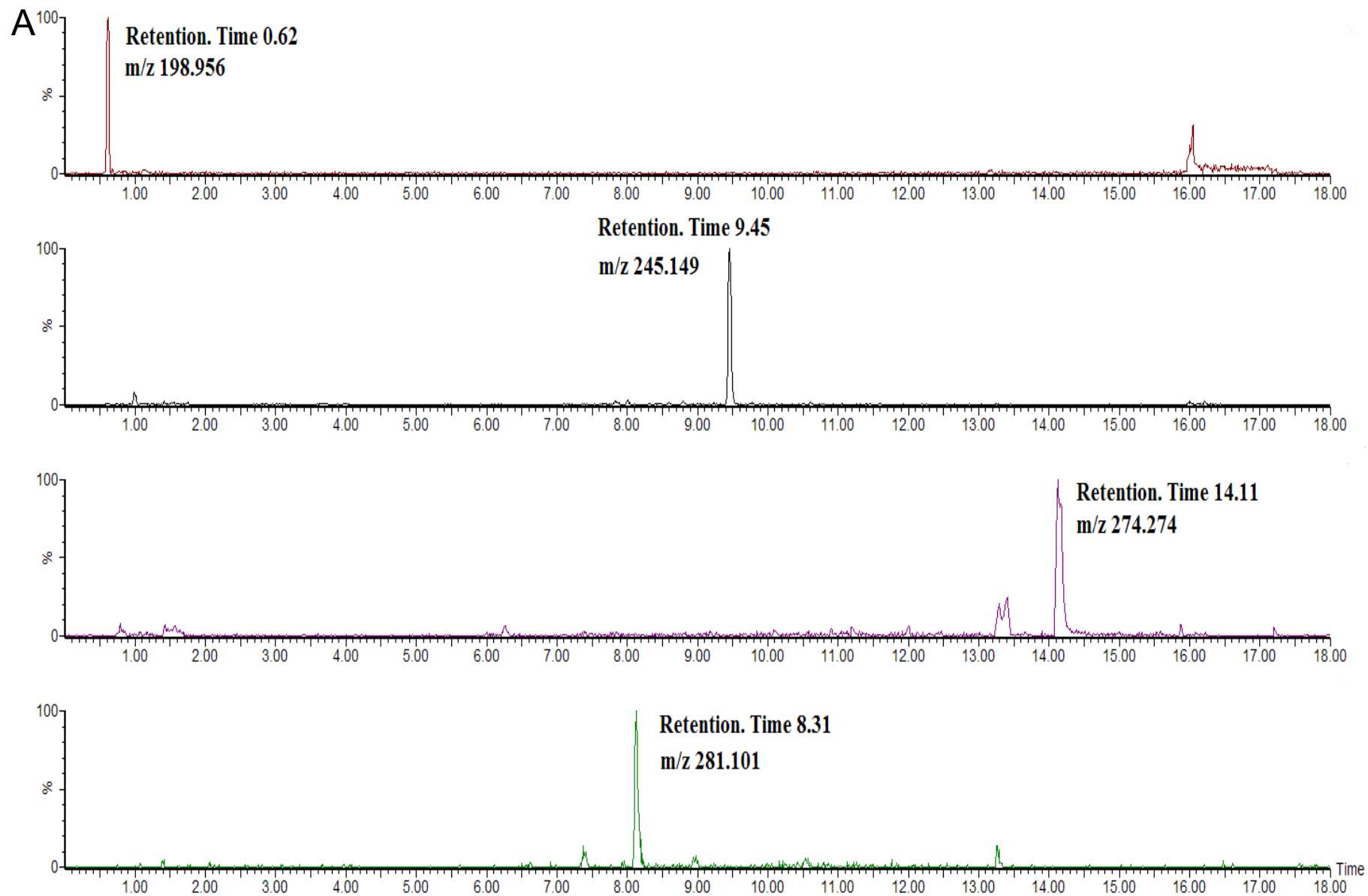


Fig. S1A

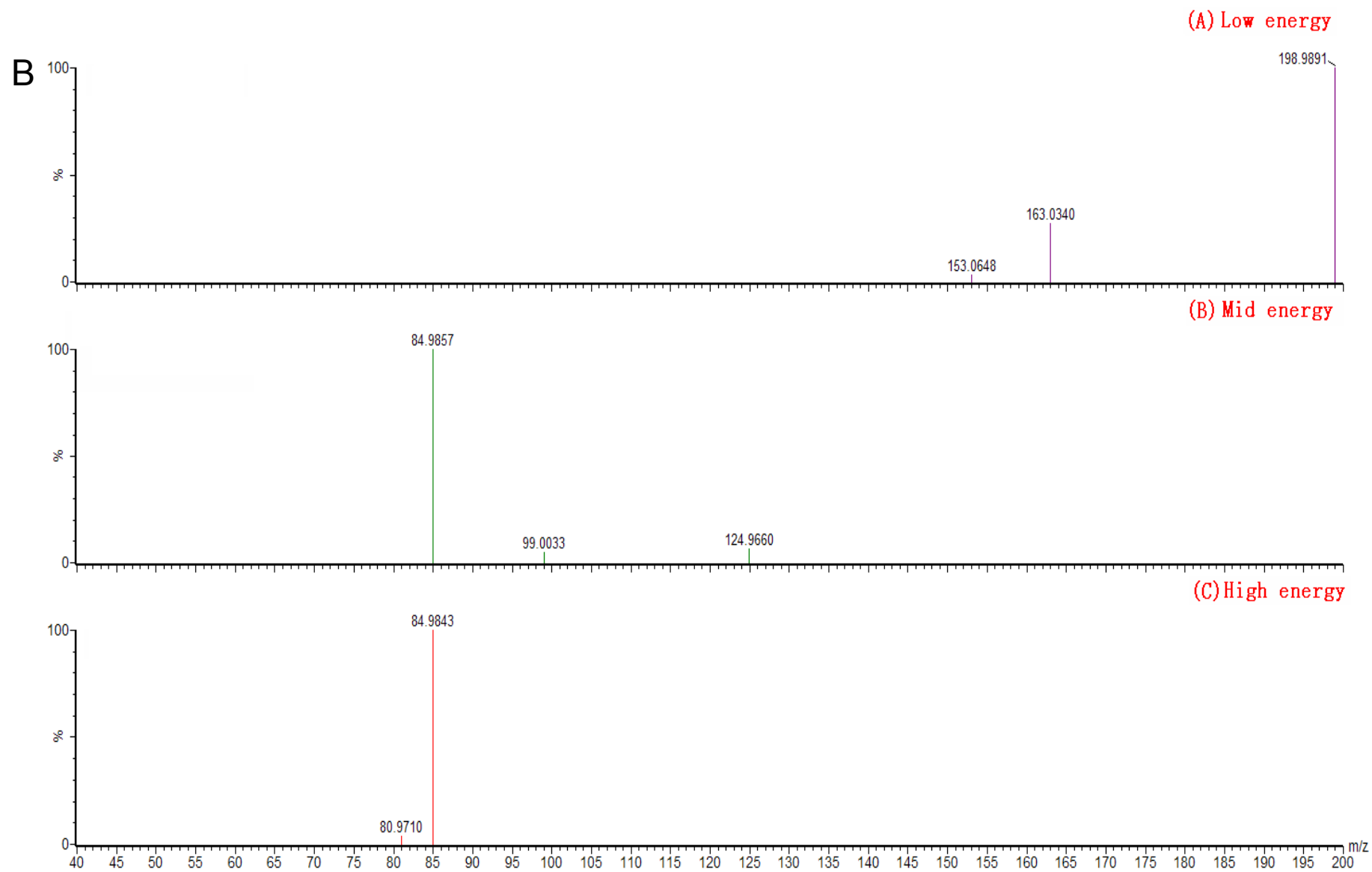


Fig. S1B

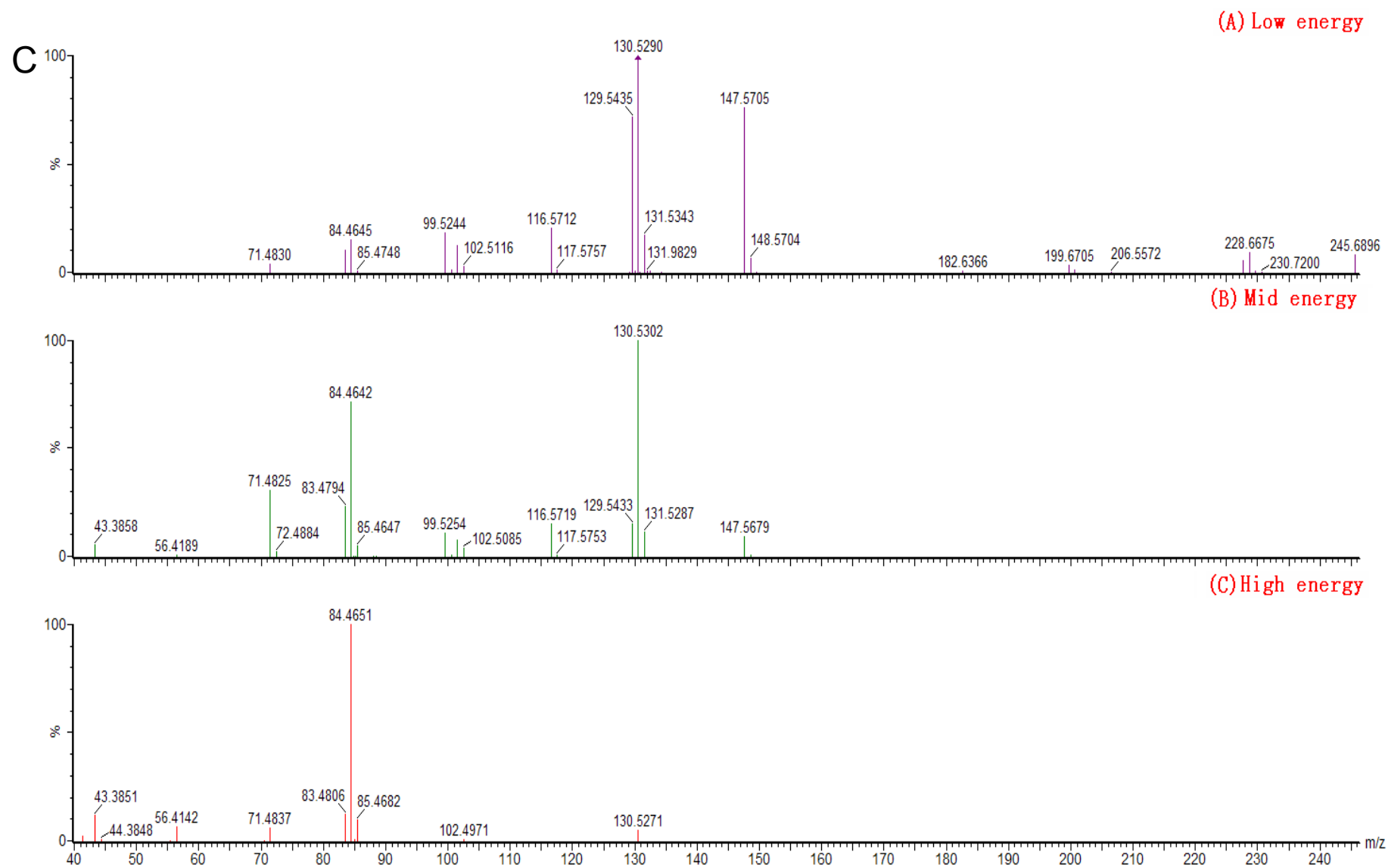


Fig. S1C

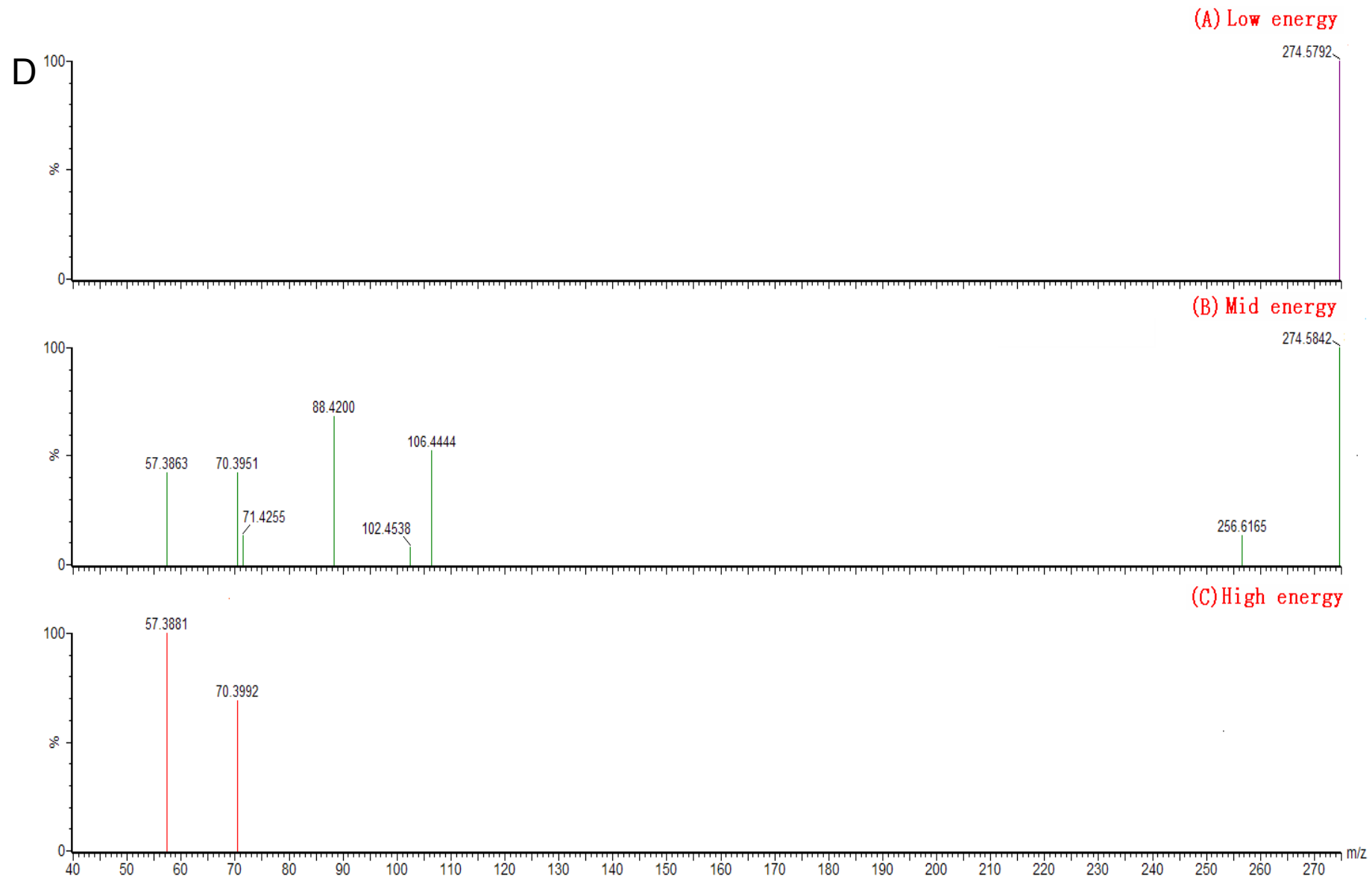


Fig. S1D

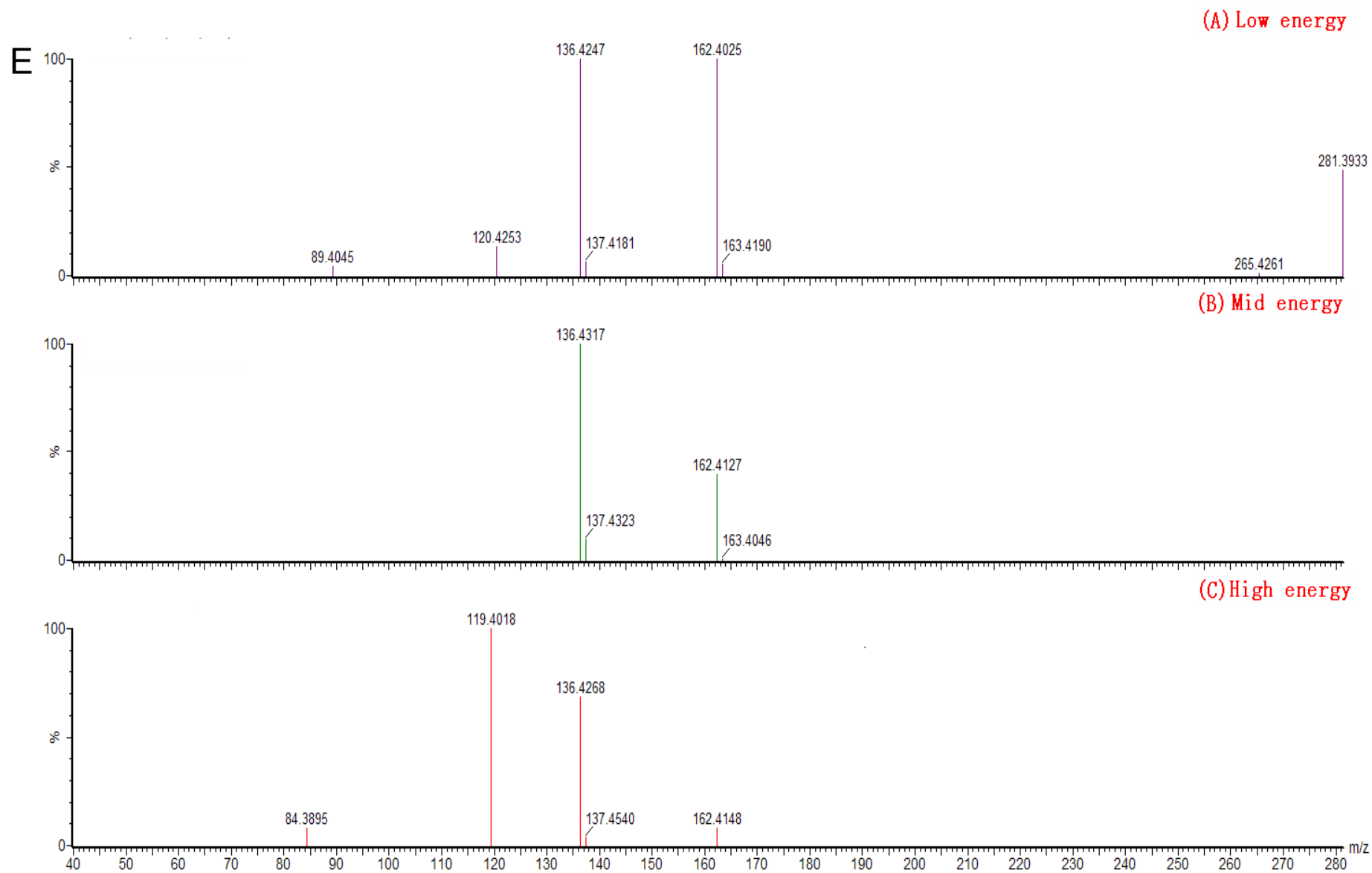


Fig. S1E